

## Research article

[urn:lsid:zoobank.org:pub:7CE40B75-3E2E-41B7-9705-E5E7BBE2AB77](https://zoobank.org/pub/7CE40B75-3E2E-41B7-9705-E5E7BBE2AB77)

# Specimen labelling errors: birds collected on the Falkland Islands prior to 1861, now in Naturalis Biodiversity Center, Leiden, Netherlands

Justin J. F. J. Jansen

*Naturalis Biodiversity Center, Postbus 9517, NL-2300 RA Leiden, Netherlands*

*E-mail: [justin.jansen@naturalis.nl](mailto:justin.jansen@naturalis.nl)*

[urn:lsid:zoobank.org:author:4CF8D990-C4E6-4073-9B91-6424E0C1BA54](https://zoobank.org/author/4CF8D990-C4E6-4073-9B91-6424E0C1BA54)

**Abstract.** Historical museum specimens are often documented by labels or by handwritten notations on the pedestal underside. However, mistakes and misinterpretations of specimen data often occur due to a complete lack of such data or in the transcription of data from original sources (either in the form of original labels or personal communications). This paper discusses the errors and omissions in data found on 89 specimens collected in the Falkland Islands before 1861, present or formerly present in Naturalis Biodiversity Center (Leiden, Netherlands), resulting from label substitution and transcription errors. Errors and omissions in data include location, collector, collecting locality and date. The corruption of original data shows that the gravest error made at that time was the disposal of the original labels.

**Key words.** Bird collection, Ornithology, Falkland Islands, Charles Abbott.

## INTRODUCTION

Ornithology in the early nineteenth century flourished worldwide, but up to 1861 relatively few expeditions with natural history objectives collected birds in the Falkland Islands (Jansen & van der Mije 2015). The Falklands rose to fame when Charles Darwin published accounts of the birds and mammals encountered (Darwin 1839, 1859) when HMS *Beagle* visited in 1833 and 1834. We find published accounts of other expeditions up to 1861 (Lesson & Garnot 1826–30, Darwin 1839, Freycinet et al. 1837, MacGillivray 1852), when Captain Charles Compton Abbott left the Falklands (Abbott 1860, 1861).

To get a better understanding of the birds collected in the Falkland Islands, all specimens in the Naturalis Biodiversity Center, Leiden, Netherlands (hereafter Naturalis) or noted in the literature that were collected in the Falkland Islands or arrived at Naturalis prior to 1 January 1862, were analysed. In total, 89 specimens, represented by mounts or skins, were examined. A number of these specimens have been previously cited by earlier authors (Schlegel 1862a, b, c, d, 1863a, b, c, d, 1864, 1865, 1866, 1867, van Grouw & Steinheimer 2008).

The labelling of bird specimens in Naturalis has been the subject of research by a few previous authors, with a special focus on the removal of original labels (Mees 1953, Mees & Fisher 1986, Rasmussen & Prŷs-Jones 2003). However, their focus was on a single labelled bird of Edgar Leopold Layard's (Mees & Fisher 1986) and Karl B.H. von Rosenberg's birds from Indonesia (Mees 1953, Rasmussen & Prŷs-Jones 2003). No extensive re-

search has yet been carried out on a large series of birds with regard to their label substitution and transcription errors. The research conducted for this paper was carried out in order to establish how much such 'vandalism' of Falkland Islands birds has occurred in Naturalis.

Jansen & van der Mije (2015) noted that various sources in addition to the known expeditions collected birds and mammals in the Falkland Islands. The original sources are therefore often hard, or in most cases even impossible, to trace.

Major expeditions and collectors that collected birds in the Falklands include:

- *L'Uranie*, 15 February–27 April 1820. '65+' birds (appendix 1) that arrived at the Museum national d'Histoire naturelle, Paris (hereafter MNHN) have annotations that they were collected in the Falklands (MNHN archives).
- *La Coquille*, 18 November–18 December 1825. 42 birds (appendix 2) that arrived at the MNHN have annotations that they were collected in the Falklands (MNHN archives).
- HMS *Beagle*, 1 March–5 April 1833 and 11 March–7 April 1834. 33 birds were collected by Charles Darwin and Syms Covington on the Falklands (Steinheimer 2004). And 24 specimens from the Falklands were collected by Captain Robert Fitzroy on the HMS *Beagle* expedition and donated in by Sir William Burnett in 1838 (Natural History Museum Tring, UK (hereafter NHMUK)).

- HMS *Erebus* and *Terror*, 6 April–8 September 1842. 142 birds and eggs donated to the NHMUK by Robert McCormick in 1890 and 1891 (Sharpe 1906).
- HMS *Rattlesnake*, 5–25 July 1850. Specimens were presented to the NHMUK by Owen Stanley in 1850, 1854 and 1855, totalling 219 specimens, and 16 birds by William McGillivray in 1851 (Sharpe 1906).
- Charles Compton Abbott (1821–1887), August 1857–December 1860. The Hobart (Tasmania) born officer entered the army at 22 July 1844, and served in the 13<sup>th</sup>, 20<sup>th</sup>, 75<sup>th</sup>, and 47<sup>th</sup> Regiments. He commanded the detachment at the Falkland Islands for four or five years (became captain in March 1858). He returned to Australia, and after serving in the North Gloucester Militia in 1862–69, he was transferred to the Queen's Country Royal Rifles, he retired from service in 1876. Abbott was in command of the British forces stationed at Stanley on East Falkland. Abbott made various excursions into the interior, both in the north and in the south of East Falkland and lost no opportunity to collect eggs and skins (Darwin 1871, Jansen & van der Mije 2015). Specimens collected by Abbott ended up in a number of collections. No less than 46 specimens (possibly as many as 76) in Naturalis were received directly from Abbott, as indicated by Abbott being mentioned on the label and/or pedestal.

27 birds in Naturalis acquired from Gustav Adolph Frank Sr., for which there are no specific collectors mentioned on their labels, most likely originate with Abbott also, although this remains speculative. While Abbott may have sold his birds to Frank and John Gould, he probably did so only to Gould, who in turn sold them to Frank, and Frank in turn to others such as the merchant Charles Jamrach and the Zoological Society of London (ZSL). Of four Falkland birds examined in the NHMUK from the ZLS, only one mentions Abbott as its source on its label (though this is not the original label). Specimens from Abbott arrived in the NHMUK via John Henry Gurney (in particular raptors), an 1859 shipment from Gould (comprising 132 birds and eggs) and from the ZLS (Sharpe 1906). The Abbott labels are easy recognizable as they are printed labels, with Abbott's own handwriting on them (Figs. 2, 3).

This paper is not intended to re-label the specimens from archival research and no such research was executed, although known information is given.

## MATERIAL AND METHODS

The 89 birds discussed in this article were found by researching the relevant literature (Schlegel 1862a, b, c, d, 1863a, b, c, d, 1864, 1865, 1866, 1867) and by visits to Naturalis on 18 December 2012, 11 February 2013

and 3 December 2015. Additional visits were made to Museum national d'Histoire naturelle, Paris (hereafter MNHN) on 2–12 April 2013 and to the Natural History Museum, Tring (hereafter NHMUK) on 12–13 November 2013, 18 June 2015 and 23 March 2016. These visits were made to establish if original labels on Falkland Islands specimens were present. 25 Falkland specimens in MNHN were examined and 103 Falkland specimens in NHMUK. Literature was also consulted to find additional information on dates when and where specific specimens were collected, and by whom.

Aware that specimens are assigned to "Falklands" or to "East Falkland" on the basis of label data, could well be the location from where it is mailed/shipped to Europe. However, besides some penguin species no odd records were found. Research revealed that the main collector Abbott is known to travelled extensively on East Falkland and collected all kinds of natural history material (Lanjouw & Staffleu 1954), and the known expeditions did not ship specimens from the Falklands to Europe.

The two research questions are:

- What were the transcription errors made on the available sources?
- Did the specimens at Naturalis once had these original labels?

## RESULTS

### The specimens

No synonyms are given, only the actual English and Latin name. The framework as set by Steinheimer 2010 is followed with some slight modifications.

### Abbreviations

Loc = locality,  
Col = collected by,  
Acq = Acquisition history,  
Tax = taxidermy,  
Pub = Publications mention the specimen or collecting trip.

Taxonomy and nomenclature follow del Hoyo & Collar (2014, 2016).

### ANATIDAE

**Upland Goose** *Chloephaga picta leucoptera* (J.F. Gmelin, 1789) [RMNH.AVES.230417]. Loc: Falklands (ca. 51° 41' 0" S, 59° 10' 0" W). Date: November–December 1822. Col: voyage *La Coquille*, R.P. Lesson / P. Garnot. Age/sex: adult ♂. Acq: June 1835, in exchange with the Paris Museum. Status: extant. Accessed: 18

December 2012. Tax: mounted. Pub: Lesson & Garnot 1826–1830; Schlegel 1866.

**Pedestal label:** [two hands] Cat n°1 / *leucoptera* / *Chloëphaga magellanica* / (Gmelin) / ♂ / verzameld tijdens / de reis van “La Coquille” / Falkland eilanden [two hands].

**Pedestal underside:** [one hand] *Anser magellanicus* ♂ / *Anser leucopterus* / *Anas leucoptera* Lath / Oie a ailes blanches Buff vol 9 / Brown III talo 40 / Cat N°1 / voy La Coquille / Malouines.

**Schlegel 1866** (Tome VI, 31: 99–100): *Anser magellanicus*, Cat 1, ♂ adulte, Malouines, voyage de la Coquille.

**Remarks:** The collection site on the label (“Falkland eilanden”) differs from that on the underside and Schlegel 1866 (“Malouines”). Several Latin names are cited, those on the label and underside differ; the primary name on the latter however agrees with Schlegel 1866. The notation of “adulte” is present only in Schlegel 1866, and is lacking on the label and underside. Gmelin is noted as the name source on the label, Buffon as the source on the underside. Only Schlegel’s handwriting appears under the base of the pedestal.

Mentioned in the June 1835 exchange list between Paris and Leiden as ‘Oie des torres Magellanicus’. The stand is ‘new’ (e.g. it has Temminck’s handwriting) and does not contain any original information / handwriting by Dufresne (the mounted birds from *La Coquille* now present in MNHN have Dufresne’s handwriting on the pedestal underside). A possible explanation is that it arrived in Leiden as an unmounted skin and was subsequently mounted there.

**Upland Goose** *Chloephaga picta leucoptera* (J.F. Gmelin, 1789) [RMNH.AVES.230418]. Loc: Falklands (ca. 51° 41' 0" S, 59° 10' 0" W). Date: –. Col: –. Age/sex: adult ♂. Acq: –. Status: extant. Accessed: 18 December 2012. Tax: mounted. Publ: Schlegel 1866.

**Pedestal label:** [two hands]. Cat n°2 / *leucoptera* / *Chloëphaga magellanica* / (Gmelin) / ♂ / Falkland eilanden.

**Pedestal underside:** [one hand] *Anser magellanicus* ♂ / *Anser leucopterus* / *Anas leucoptera* Lath. / Oie a ailes blanches Buff v9 / Brown III talo 40 / Cat N°2 / Malouines [one hand].

**Schlegel 1866** (Tome VI, 31: 99–100): *Anser magellanicus*, Cat 2, ♂ adulte, Malouines.

**Remarks:** The collection site on the label (“Falkland eilanden”) differs from that on the underside and Schlegel 1866 (“Malouines”). Several Latin names are cited; those on the label and underside differ; the primary name on the latter however agrees with Schlegel 1866. The notation of “adulte” is present only in Schlegel 1866, and is lacking on the label and underside. Gmelin is noted as the name source on the label, Buffon, Latham and Brown as sources on the underside. Only Schlegel’s handwriting appears under the base of the pedestal.

In June 1835 two specimens were sent from the Paris Museum as part of an exchange; this could be one of those birds. Most likely collected by Lesson / Garnot in Nov–Dec 1822. One specimen of *Chloephaga picta* is missing from HMS Beagle (Steinheimer 2004).

**Upland Goose** *Chloephaga picta leucoptera* (J.F. Gmelin, 1789) [RMNH.AVES.230419]. Loc: Falklands (ca. 51° 41' 0" S, 59° 10' 0" W). Date: –. Col: –. Age/sex: adult ♀. Acq: –. Status: extant. Accessed: 18 December 2012. Tax: mounted. Pub: Schlegel 1866.

**Pedestal label:** [two hands] Cat n°3 / *leucoptera* / *Chloëphaga magellanica* / (Gmelin) / ♀ / Falkland eilanden.

**Pedestal underside:** [one hand] *Anser magellanicus* ♀ / *Anas magellanica* Lath / Oie der Terres magellaniques Buff / pl Pub / 1006 / unreadable femelle / Cat N°3 / Malouines.

**Schlegel 1866** (Tome VI, 31: 99–100): *Anser magellanicus*, Cat 3, Femelle adulte, Malouines.

**Remark:** The collection site on the label (“Falkland eilanden”) differs from that on the underside and Schlegel 1866 (“Malouines”). Several Latin names are cited; those on the label and underside differ; the primary name on the latter however agrees with Schlegel 1866. The notation of “adulte” is present only in Schlegel 1866, and is lacking on the label and underside. Gmelin is noted as the name source on the label, Buffon and Latham as sources on the underside. Only Schlegel’s handwriting appears under the base of the pedestal.

In June 1835 two specimens were sent from the Paris Museum as part of an exchange; this could be one of those birds. Most likely collected by Lesson / Garnot in Nov–Dec 1822. One specimen of *Chloephaga picta* is missing from HMS Beagle (Steinheimer 2004).

**Kelp Goose** *Chloephaga hybrida malvinarum* J.C. Phillips, 1916 [RMNH.AVES.230431]. Loc: Falklands (ca. 51° 41' 0" S, 59° 10' 0" W). Date: –. Col: –. Age/sex: adult ♂. Acq: –. Status: extant. Accessed: 18 December 2012. Tax: mounted. Pub: Schlegel 1866.

**Pedestal label:** [two hands] Cat n°1 / *Chloophaga hybrida* / (Molina) / ♂ malvinarum Phillips / Falkland eilanden.

**Pedestal underside:** [one hand] *Anser antarcticus* ♂ ad / Sparm. mus (ext. note la ♀ pl 5) / Cat N°1 / Malouines.

**Schlegel 1866** (Tome VI, 31: 98–99): *Anser antarcticus*, Cat 1, ♂ adulte, au plumage d’un blanc uniforme, Malouines: bec noir, mais entre les narines et le front rougeâtre avec des taches noires.

**Remarks:** The collection site on the label (“Falkland eilanden”) differs from that on the underside and Schlegel 1866 (“Malouines”). Several Latin names are cited; those on the label and underside differ; the name on the latter however agrees with Schlegel 1866. The notations of “ad” and “adulte” are present on the underside and in Schlegel 1866, but lacking on the label. Phillips is noted as the name source on the label, Sparmann’s Museum as the source on the underside. Only Schlegel’s handwriting appears under the base of the pedestal.

**Kelp Goose** *Chloephaga hybrida malvinarum* J.C. Phillips, 1916 [RMNH.AVES.230432]. Loc: Falklands (ca. 51° 41' 0" S, 59° 10' 0" W). Date: November–December 1822. Col: voyage La Coquille, R.P. Lesson / P. Garnot. Age/sex: adult ♀. Acq: June 1835, in exchange with Paris Museum. Status: extant. Accessed: 18 December 2012. Tax: mounted. Pub: Lesson & Garnot 1826–1830; Schlegel 1866.

**Pedestal label:** [two hands] Cat. n°2 / *Chloephaga hybrida* / (Molina) / ♀ malvinarum Phillips / Verzameld tijdens / de reis van / “La Coquille” / Falkland eilanden [two hands].

**Pedestal underside:** [one hand] *Anser antarcticus* ♀ Vieill / Sparm Mus Carl pl 37 / Less Coquille pl 50 / De antarctique femelle / Cat N°2 / Coquille Malouines [one hand].



**Schlegel 1866** (Tome VI, 31: 98–99): *Anser antarcticus*, Cat 2, Femelle adulte, Malouines, du voyage de la *Coquille*, absolument semblable à l'individu figure par Lesson.

**Remark:** The collection site on the label (“Falkland eilanden”) differs from that on the underside and Schlegel 1866 (“Malouines”). Several Latin names are cited; those on the label and underside differ; the name on the latter however agrees with Schlegel 1866. The notation of “adulte” is present only in Schlegel 1866, and is lacking on the label and underside. Phillips is noted as the name source on the label, Vieillot, Sparmann’s Museum, and Lesson as the sources on the underside. Only Schlegel’s handwriting appears under the base of the pedestal.

Mentioned in the June 1835 exchange list between Paris and Leiden as ‘*Oie des torres Magellanicus*’.

**Kelp Goose** *Chloephaga hybrida malvinarum* J.C. Phillips, 1916 [RMNH.AVES.230433]. Loc: Falklands (ca. 51° 41' 0" S, 59° 10' 0" W). Date: in either 1858 or 1859. Col: C.C. Abbott. Age/sex: young ♂. Acq: via John Gould and Gustav Adolph Frank Sr. Status: extant. Accessed: 18 December 2012. Tax: mounted. Pub: Abbott 1860, 1861; Gould 1859; Schlegel 1866; Sclater 1860, 1861, 1862.

**Pedestal label:** [two hands] Cat n°3 / *Chloephaga hybrida* / Molina / ♂ juv. *malvinarum* Phillips / Abbott coll: / Frank 1860 / Falkland eilanden.

**Pedestal underside:** [one hand] *Anser antarcticus* / ♂ jong / Pooten geel, iris en bek zwart / Cat N°3 / Reis van Capitain Abbott / Frank 1860 / Falkland.

**Schlegel 1866** (Tome VI, 31: 98–99): *Anser antarcticus*, Cat 3, ♂ dans la livree de passage, Malouines, voyage du Capitaine Abbot, acquis en 1860: pieds jaunes, vec et iris noirs (Abbot).

**Remarks:** The collection site on the label (“Falkland eilanden”) differs from that on the underside “Falkland”) and Schlegel 1866 (“Malouines”). Several Latin names are cited; those on the label and underside differ; the name on the latter however agrees with Schlegel 1866. Phillips is noted as the name source on the label; no name source appears on the underside. Only Schlegel’s handwriting appears under the base of the pedestal.

Army Captain Charles Compton Abbott was stationed at Stanley, East Falklands in 1859–1861 in the Falkland Islands Detachment. He collected many birds and attached printed labels to his specimens. These labels had his full name and that of his regiment printed on one side, on the other side, he noted in pen the year, collecting location and details of the bare parts. These original labels can be found in NHMUK. So, contra the underside and Schlegel 1866, Abbott did not collect while on a “voyage” or “Reis”; moreover, his name is misspelled in Schlegel 1866. This specimen was acquired via Gustav Adolph Frank, the Amsterdam-based merchant who, though he did not collect a single bird himself, exchanged and purchased birds on a large scale with the likes of the Paris Museum and John Gould, both known to possess specimens from the Falklands (in particular those collected by C.C. Abbott). However, Frank is not mentioned as the source of this specimen in Schlegel 1866.

**Ashy-headed Goose** *Chloephaga poliocephala* P.L. Sclater, 1857 [RMNH.AVES.230436]. Loc: Falklands (ca. 51° 41' 0" S, 59° 10' 0" W). Date: –. Col: –. Age/sex: –.

adult ♂. Acq: –. Status: extant. Accessed: 18 December 2012. Tax: mounted. Pub: Schlegel 1866.

**Pedestal label:** [one hand] Cat n°2 / *Chloephaga poliocephala* / G.R. Gray / ♂ / Falkland eilanden.

**Pedestal underside:** [one hand] *Anser poliocephala* / *Bernicla inornatus* ♂ / Cat n°2 / *Bernicla inornatus* Gray / Gen of Birds (unreadable) / (unreadable line) / Malouines.

**Schlegel 1866** (Tome VI, 31: 101): *Anser poliocephala*, Cat 2, Adulte, Malouines.

**Remarks:** The collection site on the label differs from that on the underside and Schlegel 1866. Three generic and two specific names are cited; those on the label and underside differ; the primary binomial on the latter however agrees with Schlegel 1866. The identification as ♂ is absent from Schlegel 1866 and as an adult from the label and underside. The only name source mentioned is Gray on the underside. Only Schlegel’s handwriting appears under the base of the pedestal.

**Ruddy-headed Goose** *Chloephaga rubidiceps* P.L. Sclater, 1861 [RMNH.AVES.230443]. Loc: Falklands (ca. 51° 41' 0" S, 59° 10' 0" W). Date: –. Col: –. Age/sex: adult ♂. Acq: via Gustav Adolph Frank Sr. Status: extant. Accessed 18 December 2012. Tax: mounted. Pub: Schlegel 1866.

**Pedestal label:** [one hand] Cat n°1. / *Chloephaga rubidiceps* / Sclater / ♂ / Falkland eilanden.

**Pedestal underside:** [one hand] *Bernicla* / *Anser rubidiceps*. / tres 1860 / ♂ / Catal N° 1 / Malouines.

**Schlegel 1866** (Tome VI, 31: 102): *Chloephaga rubiceps*, Cat 1, ♂ adulte, Malouines.

**Remarks:** The collection site on the label differs from that on the underside and Schlegel 1866. Two generic names are cited; those on the label and underside differ; the binomial on the label however agrees with Schlegel 1866. The identification as adult is present only in Schlegel 1866. The only name source mentioned is Sclater on the label. Only Schlegel’s handwriting appears under the base of the pedestal.

This specimen was acquired through the Amsterdam-based dealer Gustav Adolph Frank (see Kelp Goose RMNH.AVES.230433 above) and arrived on 30 April 1860, as indicated on the underside.

**Ruddy-headed Goose** *Chloephaga rubidiceps* P.L. Sclater, 1861 [RMNH.AVES.230445]. Loc: Falklands (ca. 51° 41' 0" S, 59° 10' 0" W). Date: –. Col: –. Age/sex: –. Acq: –. Status: extant. Accessed 18 December 2012. Tax: mounted. Pub: Schlegel 1866.

**Label:** [one hand] Cat n°3. / *Chloephaga rubidiceps* / Sclater / Falkland eilanden.

**Pedestal underside:** [one hand] *Chloephaga rubidiceps* / Falkland.

**Schlegel 1866** (Tome VI, 31: 102): not mentioned.

**Remark:** Notably missed by Schlegel 1866, yet only Schlegel’s handwriting appears under the base of the pedestal. The only name source mentioned is Sclater on the label. The collection site on the label (“Falkland eilanden”) differs from that on the underside (“Falkland”).

**Falkland Steamer Duck** *Tachyeres brachypterus* Latham, 1790 [RMNH.AVES.230636]. Loc: Falklands

(ca. 51° 41' 0" S, 59° 10' 0" W). Date: in either 1858 or 1859. Col: C.C. Abbott. Age/sex: adult ♂. Acq: via John Gould and Gustav Adolph Frank Sr.; though not specified, most likely arrived on 30 April 1860. Status: extant. Accessed: 18 December 2012. Tax: mounted. Pub: Abbott 1860, 1861; Gould 1859; Schlegel 1866; Sclater 1860, 1861, 1862.

**Pedestal label:** absent.

**Pedestal underside:** [one hand] (unreadable) / *Fuligula cinerea* / Cat N°1 / N°3 / Loggerhead Duck / ♂ / *Tachyeres brachyptera* (Lath) / Reis van Capitaen Abbott / (Frank) 1860 / Falkland.

**Schlegel 1866** (Tome VI, 31: 13): *Fuligula cinerea*, Cat 1, ♂ adultes, Malouines, voyage de Mr. Abbot, acquis en 1860.

**Remarks:** The collection site on the underside differs from that in Schlegel 1866. Two generic and two specific names are cited, with the primary binomial on the underside agreeing with Schlegel 1866. Both the underside and Schlegel 1866 identify the specimen as male, but only the latter identifies it as an adult. The only name source mentioned is Latham on the underside. Only Schlegel's handwriting appears under the base of the pedestal.

This specimen was acquired in 1860 from the Amsterdam-based dealer Gustav Adolph Frank (see Kelp Goose RMNH.AVES.230433 above).

**Falkland Steamer Duck** *Tachyeres brachypterus* Latham, 1790 [RMNH.AVES.230637]. Loc: Falkland (ca. 51° 41' 40" S, 57° 51' 10" W). Date: in either 1858 or 1859. Col: C.C. Abbott. Age/sex: adult ♂. Acq: via John Gould and Gustav Adolph Frank Sr.; though not specified, most likely arrived on 30 April 1860. Status: extant. Accessed: 18 December 2012. Tax: mounted. Pub: Abbott 1860, 1861; Gould 1859; Schlegel 1866; Sclater 1860, 1861, 1862.

**Pedestal label:** absent.

**Pedestal underside:** [one hand] (unreadable) / *Fuligula cinerea* / Cat N°2 / Loggerhead Duck / ♀ / *Tachyeres brachyptera* (Lath) / Van Cap Abbott / Falkland Island Detachment / Frank / Falkland.

**Schlegel 1866** (Tome VI, 31: 13): *Fuligula cinerea*, Cat 2, ♀ adultes, Malouines, voyage de Mr. Abbot, acquis en 1860.

**Remarks:** The collection site on the underside differs from that in Schlegel 1866. Two generic and two specific names are cited, with the primary binomial on the underside agreeing with Schlegel 1866. Both the underside and Schlegel 1866 identify the specimen as female, but only the latter identifies it as an adult. The only name source mentioned is Latham on the underside. Only Schlegel's handwriting appears under the base of the pedestal. The text on the underside clearly indicates the former existence of an original label on the specimen.

The bird was acquired through the Amsterdam-based dealer Gustav Adolph Frank and arrived on 30 April 1860 (see Kelp Goose RMNH.AVES.230433 as for C.C. Abbott).

**Falkland Steamer Duck** *Tachyeres brachypterus* Latham, 1790 [–]. Loc: Falkland (ca. 51° 41' 40" S, 57° 51' 10" W). Date: –. Col: –. Age/sex: –. Acq: –. Status:

non-extant; not found on 18 December 2012 or 11 February 2013. Tax: mounted. Pub: Schlegel 1866.

**Schlegel 1866** (Tome VI, 31: 13): *Fuligula cinerea*, Cat 3, Individue en mue, Malouines.

**Remarks:** Present location of specimen and the original collector unknown.

**Crested Duck** *Lophonetta specularioides specularioides* (P.P. King, 1828) [RMNH.AVES.231375]. Loc: Falklands (ca. 51° 41' 0" S, 59° 10' 0" W). Date: either 1858 or 1859. Col: C.C. Abbott. Age/sex: adult ♂. Acq: via John Gould and Gustav Adolph Frank Sr. Status: extant. Accessed 18 December 2012. Tax: mounted. Pub: Abbott 1860, 1861; Gould 1859; Schlegel 1866; Sclater 1860, 1861, 1862.

**Pedestal label:** [two hands] Cat n°2 / *specularioides* King / *Anas cristata* Gmelin / ♂ / Abbott coll / Frank 1860 / Falkland.

**Pedestal underside:** [one hand] *Anas cristata* Gmel / Cat N°3 / ♂ / eye red, feet and beak lead color / Capt Abbot / Frank 1860 / Falklands eilanden / (unreadable).

**Schlegel 1866** (Tome VI, 31: 39): *Anas cristata*, Cat 3, ♂ adultes, iles Malouines, voyage du Capitaine Abbot, acquis en 1860, Iris rouge, pieds et bec couleur de plomb.

**Remarks:** The collection site on the label, underside and in Schlegel 1866 differ. Two specific names are cited, with the primary binomial on the underside agreeing with Schlegel 1866. The label, underside, and Schlegel 1866 all identify the specimen as male, but only the latter identifies it as an adult. Two name sources are mentioned, King on the label and Gmelin on the underside. The catalogue number on the label doesn't correspond with the catalogue number on the underside and in Schlegel 1866. Only Schlegel's handwriting appears under the base of the pedestal.

The bird was acquired through the Amsterdam-based dealer Gustav Adolph Frank and arrived on 30 April 1860 (see Kelp Goose RMNH.AVES.230433 as for C.C. Abbott).

**Crested Duck** *Lophonetta specularioides specularioides* (P.P. King, 1828) [RMNH.AVES.231376]. Loc: Falklands (ca. 51° 41' 0" S, 59° 10' 0" W). Date: either 1858 or 1859. Col: C.C. Abbott. Age/sex: adult ♀. Acq: via John Gould and Gustav Adolph Frank Sr. Status: extant. Accessed 18 December 2012. Tax: mounted. Pub: Abbott 1860, 1861; Gould 1859; Schlegel 1866; Sclater 1860, 1861, 1862.

**Pedestal label:** [one hand] Cat n°3 / *specularioides* King / *Anas cristata* Gmelin / ♀ / Abbott coll / Frank 1860 / Falkland eilanden.

**Pedestal underside:** [one hand] *Anas cristata* Gmelin / Cat N°4 / ♀ / Reis van / Capt Abbot / Frank 1860 / 1860 / Oost Falkland.

**Schlegel 1866** (Tome VI, 31: 39): *Anas cristata*, Cat 4, ♀ adultes, iles Malouines, voyage du Capitaine Abbot, acquis en 1860, Iris rouge, pieds et bec couleur de plomb.

**Remarks:** The collection site on the label, underside and in Schlegel 1866 differ. Two specific names are cited, with the primary binomial on the underside agreeing with Schlegel 1866. The label, underside, and Schlegel 1866 all identify the specimen as female, but only the latter identifies it as an adult. Two name sources are mentioned, King on the label

and Gmelin on the underside. The catalogue number on the label doesn't correspond with the catalogue number on the underside and in Schlegel 1866. Only Schlegel's handwriting appears under the base of the pedestal.

The bird was acquired through the Amsterdam-based dealer Gustav Adolph Frank and arrived on 30 April 1860 (see Kelp Goose RMNH.AVES.230433 as for C.C. Abbott).

**Silver Teal** *Spatula versicolor fretensis* (P.P. King, 1831) [RMNH.AVES.231525]. Loc: East Falkland (ca. 51° 41' 40" S, 57° 51' 10" W). Date: either 1858 or 1859. Col: C.C. Abbott. Age/sex: adult ♂. Acq: via John Gould and Gustav Adolph Frank Sr. Status: extant. Accessed 18 December 2012. Tax: mounted. Pub: Abbott 1860, 1861; Gould 1859; Schlegel 1866; Sclater 1860, 1861, 1862.

**Pedestal label:** [two hands] *Anas* Cat n°6 / *Querquedula versicolor* / ♂ / Abbott coll / Frank 1861 O. Falkland eilanden.

**Pedestal underside:** [one hand] *Anas versicolor*; Vieillot / Cat n°6 (major) / ♂ / van Cap. Abott / Frank 1860 Oost Falkland.

**Schlegel 1866** (Tome VI, 31: 57): *Anas versicolor*, Cat 6, ♂ adulte, ile orientales des Malouines, voyage du Capitaine Abbot, acquis en 1860.

**Remarks:** The collection site on the label, underside and in Schlegel 1866 differ. Two generic names (one crossed out) are cited, with the primary binomial on the underside agreeing with Schlegel 1866. The label, underside, and Schlegel 1866 all identify the specimen as female, but only the latter identifies it as an adult. Only one name source is mentioned, Vieillot on the label. Only Schlegel's handwriting appears under the base of the pedestal.

The bird was acquired through the Amsterdam-based dealer Gustav Adolph Frank and arrived on 30 April 1860 (see Kelp Goose RMNH.AVES.230433 as for C.C. Abbott).

**Silver Teal** *Spatula versicolor fretensis* (P.P. King, 1831) [RMNH.AVES.231526]. Loc: East Falkland (ca. 51° 41' 40" S, 57° 51' 10" W). Date: either 1858 or 1859. Col: C.C. Abbott. Age/sex: adult ♀. Acq: via John Gould and Gustav Adolph Frank Sr. Status: extant. Accessed 18 December 2012. Tax: mounted. Pub: Abbott 1860, 1861; Gould 1859; Schlegel 1866; Sclater 1860, 1861, 1862.

**Pedestal label:** [two hands] *Anas* Cat n°7 / *Querquedula versicolor* / (Vieillot) / ♀ / Abbott coll: / Frank 1860 O. Falkland eilanden.

**Pedestal underside:** [one hand] *Anas versicolor* / (major) / Catal. N°7. / ♀ / Beak base yellow, remainder (unreadable) (Abbot) / van Cap. Abott / (Frank 1860) Oost Falkland.

**Schlegel 1866** (Tome VI, 31: 57): *Anas versicolor*, Cat 7, ♀ adulte, ile orientales des Malouines, voyage du Capitaine Abbot, acquis en 1860.

**Remarks:** The name giving of the location of collecting is different in underside, label and Schlegel 1866. The sexing of the specimen is noted in all both sources, the ageing however is only present in Schlegel 1866. Only Schlegel's handwriting under the base of the pedestal.

The collection site on the label, underside and in Schlegel 1866 differ. Two generic names are cited (one crossed out), with the primary binomial on the underside agreeing with Schlegel 1866. The label, underside, and Schlegel 1866 all identify the specimen as female, but only the latter identifies

it as an adult. No name sources are mentioned. Only Schlegel's handwriting appears under the base of the pedestal.

The bird was acquired through the Amsterdam-based dealer Gustav Adolph Frank and arrived on 30 April 1860 (see Kelp Goose RMNH.AVES.230433 as for C.C. Abbott).

**Cinnamon Teal** *Spatula cyanoptera cyanoptera* (Vieillot, 1816) [RMNH.AVES.231631]. Loc: East Falkland (ca. 51° 41' 40" S, 57° 51' 10" W). Date: either 1858 or 1859. Col: C.C. Abbott. Age/sex: adult ♂. Acq: via John Gould and Gustav Adolph Frank Sr. Status: extant. Accessed 18 December 2012. Tax: mounted. Pub: Abbott 1860, 1861; Gould 1859; Schlegel 1866; Sclater 1860, 1861, 1862.

**Pedestal label:** [two hands] *Anas* Cat Nr6 / *Querquedula cyanoptera* / (Vieillot) / ♂. / Abbott coll. / Frank, 1861 / Falkland eilanden.

**Pedestal underside:** [one hand] *Anas cyanoptera* / Cat N°6 / ♂ / Iris geelrood, pooten geel / snavel zwart / (Abbot) / van Cap Abbot / Frank 1861. Oost Falkland.

**Schlegel 1866** (Tome VI, 31: 51–52): *Anas cyanoptera*, Cat 6, ♂ adulte, iles Falkland, voyage du Capitaine Abbot, acquis en 1861.

**Remarks:** The collection site on the label, underside and in Schlegel 1866 differ. Two generic names are cited (one crossed out), with the primary binomial on the underside agreeing with Schlegel 1866. The label, underside, and Schlegel 1866 all identify the specimen as male, but only the latter identifies it as an adult. Only one name source is mentioned, Vieillot on the label. Only Schlegel's handwriting appears under the base of the pedestal.

The bird was acquired through the Amsterdam-based dealer Gustav Adolph Frank and arrived on 30 April 1860 (see Kelp Goose RMNH.AVES.230433 as for C.C. Abbott).

**Cinnamon Teal** *Spatula cyanoptera cyanoptera* (Vieillot, 1816) [RMNH.AVES.231625]. Loc: East Falkland (ca. 51° 41' 40" S, 57° 51' 10" W). Date: either 1858 or 1859. Coll. C.C. Abbott. Age/sex: ♀. Acq: via John Gould and Gustav Adolph Frank Sr. Status: extant. Accessed 18 December 2012. Tax: mounted. Pub: Abbott 1860, 1861; Gould 1859; Schlegel 1866; Sclater 1860, 1861, 1862.

**Pedestal label:** [two hands] *Anas* Cat N°11. / *Querquedula discors*. (L) / ♀ / Abbott coll 1860 / Falkland eilanden.

**Pedestal underside:** [one hand] *Anas discors* / Cat N°9 / ♀ / Iris zwart, pooten en bek bruinachtig / Cap Abbot / Oost-Falkland.

**Schlegel 1866** (Tome VI, 31: 50–51): *Anas discors*. Cat 9, Femelle, iles Falkland, voyage du Capitaine Abbot, acquis en 1860.

**Remarks:** The collection site on the label, underside and in Schlegel 1866 differ. Two generic names are cited (one crossed out), with the primary name on the underside agreeing with Schlegel 1866. The label, underside, and Schlegel 1866 all identify the specimen as female, but none identify the age. No name source is mentioned. Only Schlegel's handwriting appears under the base of the pedestal. The identification is incorrect.



The bird was acquired through the Amsterdam-based dealer Gustav Adolph Frank and arrived on 30 April 1860 (see Kelp Goose RMNH.AVES.230433 as for C.C. Abbott).

**Chiloe Wigeon** *Mareca sibilatrix* (Poeppig, 1829) [RMNH.AVES.230928]. Loc: Falklands (ca. 51° 41' 0" S, 59° 10' 0" W). Date: in either 1858 or 1859. Col: C.C. Abbott. Age/sex: adult ♂. Acq: via John Gould and Gustav Adolph Frank Sr. Status: extant, accessed 18 December 2012. Tax: mounted. Pub: Abbott 1860, 1861; Gould 1859; Schlegel 1866; Sclater 1860, 1861, 1862.

**Pedestal label:** [one hand] Cat n°3 / *Mareca sibilatrix* / (Pöppig) / ♂ / Abbott coll. / Frank, 1860 / Falkland eilanden.

**Pedestal underside:** [one hand] *Anas chiloensis* / Cat N°5 / ♂ / Capt Abbot / (Frank 1860) / Oost Falkland.

**Schlegel 1866** (Tome VI, 31: 46): *Anas chiloensis*, Cat (No number), ♂ adulte, iles Falkland, voyage du Capitaine Abbot, acquis en 1860.

**Remark:** The collection site on the label, underside and in Schlegel 1866 differ. The label, underside, and Schlegel 1866 all identify the specimen as male, but only the latter identifies it as an adult. Only one name source is mentioned, Poeppig on the label. The bird was acquired through the Amsterdam-based dealer Gustav Adolph Frank and arrived on 30 April 1860 (see Kelp Goose RMNH.AVES.230433 as for C.C. Abbott). Only Schlegel's handwriting appears under the base of the pedestal.

**Yellow-billed Pintail** *Anas georgica spinicauda* Vieillot, 1816 [RMNH.AVES.231462]. Loc: East Falkland (ca. 51° 41' 40" S, 57° 51' 10" W). Date: in either 1858 or 1859. Col: C.C. Abbott. Age/sex: adult ♂. Acq: via John Gould and Gustav Adolph Frank Sr. Status: extant, accessed 18 December 2012. Tax: mounted. Pub: Abbott 1860, 1861; Gould 1859; Schlegel 1866; Sclater 1860, 1861, 1862.

**Pedestal label:** [two hands] *Anas* Cat n°3 / *Dasila-spinicauda* / (Vieillot) / ♂ / Abbott coll. / Frank, 1860 / Falkland eilanden.

**Pedestal underside:** [one hand] *Anas spinicauda* / Cat N°3 / ♂ / (unreadable) zwart, snavel geel, bovenkaak aan de / kant van top met een zwarten band (zeldzaam) / van Capit Abbott / Frank 1860 / Oost Falkland.

**Schlegel 1866** (Tome VI, 31: 38–39): *Anas spinicauda*, Cat 3, ♂ adulte, iles Malouines, voyage du Capitaine Abbot, acquis en 1860.

**Remark:** The collection site on the label, underside and in Schlegel 1866 differ. The label, underside, and Schlegel 1866 all identify the specimen as male, but only the latter identifies it as an adult. Only one name source is mentioned, Vieillot on the label. The bird was acquired through the Amsterdam-based dealer Gustav Adolph Frank and arrived on 30 April 1860 (see Kelp Goose RMNH.AVES.230433 as for C.C. Abbott). Only Schlegel's handwriting appears under the base of the pedestal.

**Yellow-billed Pintail** *Anas georgica spinicauda* Vieillot, 1816 [RMNH.AVES.231463]. Loc: East Falkland (ca. 51° 41' 40" S, 57° 51' 10" W). Date: in either 1858 or 1859. Col: C.C. Abbott. Age/sex: adult ♀. Acq: via John Gould and Gustav Adolph Frank Sr. Status: extant, ac-

cessed 18 December 2012. Tax: mounted. Pub: Abbott 1860, 1861; Gould 1859; Schlegel 1866; Sclater 1860, 1861, 1862.

**Pedestal label:** [two hands] *Anas* Cat n°4 / *Dasila spinicauda* / (Vieillot) / ♀ / Abbott coll. / Frank, 1860 / Falkland eilanden.

**Pedestal underside:** [one hand] *Anas spinicauda*, Vieillot / Cat N°4 / ♀ / pooten en bek (unreadable), het mannetje (unreadable) / Cap. Abbot / Frank 1860 / Oost Falkland.

**Schlegel 1866** (Tome VI, 31: 38–39): *Anas spinicauda*, Cat 4, ♀ adulte, iles Malouines, voyage du Capitaine Abbot, acquis en 1860.

**Remark:** The collection site on the label, underside and in Schlegel 1866 differ. The label, underside, and Schlegel 1866 all identify the specimen as female, but only the latter identifies it as an adult. The bird was acquired through the Amsterdam-based dealer Gustav Adolph Frank and arrived on 30 April 1860 (see Kelp Goose RMNH.AVES.230433 as for C.C. Abbott). Only Schlegel's handwriting appears under the base of the pedestal.

**Yellow-billed Teal** *Anas flavirostris flavirostris* Vieillot 1816 [RMNH.AVES.231104]. Loc: East Falkland (ca. 51° 41' 40" S, 57° 51' 10" W). Date: in either 1858 or 1859. Col: C.C. Abbott. Age/sex: adult ♂. Acq: via John Gould and Gustav Adolph Frank Sr. Status: extant, accessed 18 December 2012. Tax: mounted. Pub: Abbott 1860, 1861; Gould 1859; Schlegel 1866; Sclater 1860, 1861, 1862.

**Pedestal label:** [two hands] *Anas* Cat n°1 / *Nettion* / *Anas flavirostris* / (Vieillot) / ♂ / Abbott coll. / Frank, 1860 / Falkland eilanden.

**Pedestal underside:** [one hand] *Anas flavirostris* Vieillot / Cat 3 / *Querquedula anaustirostra* Philippi & Landbeck / (1863) (unreadable) / ♂ / oogen zwart, snavel geel / zwart in / een lijn op de bovenkaak zwart / pooten roodkleurig groenachtig / (Abbot) / Capt Abbot / (Frank 1860 / Falkland.

**Schlegel 1866** (Tome VI, 31: 59): *Anas flavirostris*, Cat 1, ♂ adultes, iles Falkland, voyage de Mr. Abbot, acquis en 1860.

**Remark:** The collection site on the label, underside and in Schlegel 1866 differ. The label, underside, and Schlegel 1866 all identify the specimen as male, but only the latter identifies it as an adult. Only one name source is mentioned, Philippi & Landbeck on the underside. Its catalogue number is 3, and wrongly labelled at the label and in Schlegel 1866. The bird was acquired through the Amsterdam-based dealer Gustav Adolph Frank and arrived on 30 April 1860 (see Kelp Goose RMNH.AVES.230433 as for C.C. Abbott). Only Schlegel's handwriting appears under the base of the pedestal.

**Yellow-billed Teal** *Anas flavirostris flavirostris* Vieillot 1816 [RMNH.AVES.231105]. Loc: Falklands (ca. 51° 41' 0" S, 59° 10' 0" W). Date: in either 1858 or 1859. Col: C.C. Abbott. Age/sex: adult ♀. Acq: via John Gould and Gustav Adolph Frank Sr. Status: extant, accessed 18 December 2012. Tax: mounted. Pub: Abbott 1860, 1861; Gould 1859; Schlegel 1866; Sclater 1860, 1861, 1862.

**Pedestal label:** [two hands] *Anas* Cat n°2 / *Nettion* / *flavirostris* / (Vieillot) / ♀ / Abbott coll. / Frank 1860 / Falkland eilanden.

**Pedestal underside:** [one hand] *Anas flavirostris* Vieillot / Cat 4 / ♀ / Capt Abbot / Frank 1860 / Falkland.

**Schlegel 1866** (Tome VI, 31: 59): *Anas flavirostris*, Cat 2, Femelle adultes, îles Falkland, voyage de Mr. Abbot, acquis en 1860.

**Remark:** The collection site on the label, underside and in Schlegel 1866 differ. The label, underside, and Schlegel 1866 all identify the specimen as female, but only the latter identifies it as an adult. At the underside cat 4 is mentioned, this is incorrect, it's 2. The bird was acquired through the Amsterdam-based dealer Gustav Adolph Frank and arrived on 30 April 1860 (see Kelp Goose RMNH.AVES.230433 as for C.C. Abbott). Only Schlegel's handwriting appears under the base of the pedestal.

**Yellow-billed Teal** *Anas flavirostris flavirostris* Vieillot 1816 [RMNH.AVES.231106]. Loc: Falkland (ca. 51° 41' 0" S, 59° 10' 0" W). Date: —. Col: —. Age/sex: adult. Acq: via Gustav Adolph Frank Sr. Status: extant, accessed 18 December 2012. Tax: mounted. Pub: Schlegel 1866.

**Pedestal label:** [two hands] *Anas* Cat n°3 / *Nettion* / *flavirostris* / Vieillot / ad. / Frank 1861 / Falkland eilanden.

**Pedestal underside:** [one hand] *Anas flavirostris* / Vieillot / Cat N°5 / Frank / 1861 / Falkland.

**Schlegel 1866** (Tome VI, 31: 59): *Anas flavirostris*, Cat 3, Individu des îles Falkland, 1861.

**Remark:** The collection site on the label, underside and in Schlegel 1866 differ. The label only notices the ageing. The bird was acquired through the Amsterdam-based dealer Gustav Adolph Frank (see Kelp Goose RMNH.AVES.230433). Only Schlegel's handwriting appears under the base of the pedestal.

#### PODICIPEDIDAE

**White-tufted Grebe** *Rollandia rolland rolland* (Quoy & Gaimard, 1824) [RMNH.AVES.107453]. Loc: Falklands (ca. 51° 41' 0" S, 59° 10' 0" W). Date: —. Col: —. Age/sex: adult ♂. Acq: via Gustav Adolph Frank Sr. Status: extant, accessed 18 December 2012. Tax: mounted. Pub: Schlegel 1867. (Figs 1, 2)

**Pedestal label 1:** [one hand] Cat n°1 / *Podiceps rollandi* / Gould / ♂ / Falkland eilanden.

**Pedestal label 2:** [one hand] *Podiceps Rollandii* / ♂. ad: Cat: 1 / Malouines.

**Tag:** [one hand] *Podiceps rollandii* ♂ / Cat. N°1 / Malouines.

**Pedestal underside:** [one hand] *Podiceps rollandii* ♂ / Less Uran pl 36 / Cat N° 1 / Grébe roland / Malouines.

**Schlegel 1867** (Tome VI, 33: 42): *Podiceps rollandii*, Cat 1, Mâles adultes, Malouines.

**Remark:** The collection site on the label, underside and in Schlegel 1867 differ. One label has adult and the other has male, the latter applies also for the underside. The bird was acquired through the Amsterdam-based dealer Gustav Adolph Frank (see Kelp Goose RMNH.AVES.230433). One specimen is missing from HMS *Beagle* (Steinheimer 2004). Only Schlegel's handwriting appears under the base of the pedestal.

**White-tufted Grebe** *Rollandia rolland rolland* (Quoy & Gaimard, 1824) [RMNH.AVES.107454]. Loc: Falklands



**Fig. 1.** White-tufted Grebe *Rollandia rolland rolland* (RMNH.AVES.107453), collected Falklands, by C.C. Abbott (photograph by Justin Jansen, 18 December 2012; © Naturalis Biodiversity Center, Leiden).

(ca. 51° 41' 0" S, 59° 10' 0" W). Date: —. Col: —. Age/sex: adult ♂. Acq: via Gustav Adolph Frank Sr. Status: extant, accessed 18 December 2012. Tax: mounted. Publ: Schlegel 1867.

**Pedestal label 1:** [one hand] Cat n°2 / *Podiceps rollandi* / Gould / ♂ / Frank / Falkland eilanden.

**Pedestal label 2:** [one hand] *Podiceps Rollandii* / ♂ ad: Cat 2 / Malouines.

**Pedestal underside:** [one hand] *Podiceps rollandii* ♂ / Uranie pl 36 / Cat N° 2 / Grébe rolland / Par Frank / Malouines. Het oude ♀ (unreadable / (unreadable) / oude ♂.

**Schlegel 1867** (Tome VI, 33: 42): *Podiceps rollandii*, Cat 2, Mâles adultes, Malouines.

**Remark:** The collection site on the label, underside and in Schlegel 1867 differ. The label, underside, and Schlegel 1866 all identify the specimen as male, but only the latter identifies it as an adult, but also at the underside it is identified as adult ♀. The bird was acquired through the Amsterdam-based dealer Gustav Adolph Frank (see Kelp Goose RMNH.AVES.230433 as for C.C. Abbott). One specimen is missing from HMS *Beagle* (Steinheimer 2004). Only Schlegel's handwriting appears under the base of the pedestal.

**White-tufted Grebe** *Rollandia rolland rolland* (Quoy & Gaimard, 1824) [RMNH.AVES.107455]. Loc: East Falkland (ca. 51° 41' 40" S, 57° 51' 10" W). Date: in either 1858 or 1859. Col: C.C. Abbott. Age/sex: adult ♀. Acq: via John Gould and Gustav Adolph Frank Sr. Status: ex-





**Fig. 2.** White-tufted Grebe *Rollandia rolland rolland* (RMNH.AVES.107453), Pedestal underside (photograph by Justin Jansen, 18 December 2012; © Naturalis Biodiversity Center, Leiden).

tant, accessed 18 December 2012. Tax: mounted. Pub: Abbott 1860, 1861; Gould 1859, Schlegel 1867; Sclater 1860, 1861, 1862.

**Pedestal label 1:** [one hand] Cat n°3 / *Podiceps rollandii* / Gould / ♀ / Capt Abbot / Stanley / 1859 / O. Falkland eilanden.

**Pedestal label 2:** [one hand] *Podiceps Rollandii* / ♀ ad: Cat: 3. île orientale des / Malouines / M<sup>r</sup> Abbot Stanley / 1859.

**Tag:** [one hand] *Podiceps rollandii* / ♀ Cat. N° 3 / Capt. Abbot Stanley / 1859 / Oost Falkland.

**Pedestal underside:** [one hand] *Podiceps rollandii* / ♀ / Cat N° 3 / Capt. Abbot Stanley / 1859 / Oost Falkland.

**Schlegel 1867** (Tome VI, 33: 42): *Podiceps rollandii*, Cat 3, Femelle adulte, absolument semblable au ♂ adulte; île orientale des Malouines. Voyage de Mr. Abbot Standley, acquise en 1859.

**Remark:** The collection site on the label, underside and in Schlegel 1867 differ. The labels, tag, underside, and Schlegel 1867 all identify the specimen as female, but only the latter and one of the labels identifies it as an adult. The bird was acquired through the Amsterdam-based dealer Gustav Adolph Frank (see Kelp Goose RMNH.AVES.230433 as for C.C. Abbott). Only Schlegel's handwriting appears under the base of the pedestal.

**Southern Silvery Grebe** *Podiceps occipitalis occipitalis* Garnot, 1826 [RMNH.AVES.107612]. Loc: Falkland (ca. 51° 41' 0" S, 59° 10' 0" W). Date: —. Col: —. Age/sex: ♂. Acq: via Gustav Adolph Frank Sr. Status: extant,

accessed 18 December 2012. Tax: mounted. Pub: Schlegel 1867.

**Pedestal label 1:** [two hands] *P. o. occipitalis* Garnot. Cat n°1 / *Podiceps calipareus* / Less. / ♂ / Frank / Falkland eilanden.

**Pedestal label 2:** [one hand] *Podiceps occipitalis* / ♂ Cat: 1 / Malouines.

**Tag:** [one hand] *Podiceps occipitalis*. cat 1. Frank. Malouines.

**Pedestal underside:** [one hand] *Podiceps occipitalis* / *calipareus* ♂. / Less. Coquille pl 4 / Cat. 1 / Grebe aux belles joues / p. Frank / Malouines.

**Schlegel 1867** (Tome VI, 33: 41): *Podiceps occipitalis*, Cat 1, ♂ au plumage parfait, Malouines.

**Remark:** The collection site on the label, underside and in Schlegel 1867 differ. The labels, tag, underside, and Schlegel 1867 all identify the specimen as male, but only the latter identifies it as an adult. The bird was acquired through the Amsterdam-based dealer Gustav Adolph Frank (see Kelp Goose RMNH.AVES.230433). One specimen is missing from HMS *Beagle* (Steinheimer 2004). Only Schlegel's handwriting appears under the base of the pedestal.

**Southern Silvery Grebe** *Podiceps occipitalis occipitalis* Garnot, 1826 [RMNH.AVES.107609]. Loc: Falklands (ca. 51° 41' 0" S, 59° 10' 0" W). Date: November–December 1822. Col: voyage *La Coquille*, R.P. Lesson / P. Garnot. Age/sex: adult ♀. Acq: April 1825 received in exchange with the Paris Museum. Status: extant, ac-

cessed 18 December 2012. Tax: mounted. Pub: Lesson & Garnot 1826–1830; Schlegel 1867.

**Pedestal label 1:** [two hands] *P.o. occipitalis* Garnot Cat: n°2 / *Podiceps calipareus* / Less. / ♀ April 1825 Falkland eilanden.

**Tag:** [one hand] *P occipitalis* ♀ / Cat No2 / April 1825 / Malouines.

**Pedestal underside:** [two hands] *Podiceps occipitalis* / *Podiceps calipareus* / ♀ / Less. / Grèbe aux belles Joues / Les Coquille pl 45 / Cat 2 / Avril 1825 Avril 1825. / Malouines.

**Schlegel 1867** (Tome VI, 33: 41): *Podiceps occipitalis*, Cat 2, Femelle au plumage parfait, absolument semblable aux males en parure, tuee en Avril 1825, Malouines.

**Remark:** The collection site on the label, underside and in Schlegel 1867 differ. The label, tag, underside, and Schlegel 1867 all identify the specimen as female, but only the latter identifies it as an adult. Its origin could be traced from one of the acquisition books in MNHN, that clearly shows the exchange of this bird to Temminck in April 1825.

**Southern Silvery Grebe** *Podiceps occipitalis occipitalis* Garnot, 1826 [RMNH.AVES.107610]. Loc: East Falkland (ca. 51° 41' 40" S, 57° 51' 10" W). Date: in 1858. Col: C.C. Abbott. Age/sex: adult ♂. Acq: via John Gould and Gustav Adolph Frank Sr. Status: extant, accessed 18 December 2012. Tax: mounted. Pub: Abbott 1860, 1861; Gould 1859, Schlegel 1867; Sclater 1860, 1861, 1862.

**Pedestal label 1:** [two hands] *P. o. occipitalis* Garnot Cat n°3 / *Podiceps calipareus* / Less. / ♂ / Kapt: Abbot / Stanley 1859 / Oost-Falkland.

**Pedestal label 2:** [one hand] *Podiceps occipitalis* / 1859 ♂. Cat: 3. Ite orient des, // Voy. Abbot Stanly / Malouines.

**Tag:** [one hand] *Podiceps occipitalis* / ♂ Cat 3 / Capt Abbot Stanley / 1859 / Oost-Falkland.

**Pedestal underside:** [two hands] *Podiceps occipitalis* / ♂ / Cat 3 / Capt. Abbot Stanley / 1859 / Oost-Falkland.

**Schlegel 1867** (Tome VI, 33: 41): *Podiceps occipitalis*, Cat 3, ♂ au plumage parfait, ile orientale des Malouines, voyage de Mr. Abbot Stanley, acquis en 1859.

**Remark:** The collection site on the label, underside and in Schlegel 1867 differ. The labels, tag, underside, and Schlegel 1867 all identify the specimen as male, but only the latter identifies it as an adult. The bird was acquired through the Amsterdam-based dealer Gustav Adolph Frank (see Kelp Goose RMNH.AVES.230433 as for C.C. Abbott).

## SPHENISCIDAE

**King Penguin** *Aptenodytes patagonicus* J.F. Miller, 1778 [RMNH.AVES.107287]. Loc: —. Date: —. Col: —. Age/sex: adult. Acq: from the Paris museum. Status: extant, accessed 18 December 2012. Tax: mounted. Pub: Schlegel 1867.

**Pedestal label:** [one hand] Cat n°1 / *Aptenodytes patachonica* / Forster / 1835 / Falkland eilanden.

**Pedestal underside:** [one hand] *Aptenodytes patachonica* / Cat No1 / Paris 1835 / Malouines.

**Schlegel 1867** (Tome VI, 33: 5–6): Adulte, Malouines, voyage de l'*Astrolabe* et de la *Zelee*.

**Remark:** The collection site on the label, underside and in Schlegel 1867 differ. The ageing is only present in Schlegel 1867. Either the date 1835 is incorrect or the expedition

where it is collected. Only Schlegel's handwriting appears under the base of the pedestal.

If voyage de l'*Astrolabe* et de la *Zelee* is correct: Possibly collected at Ciudad del Rey Don Felipe or elsewhere in the straits of Patagonia, Chile (not the Falklands). Col: collected at the expeditions with the *Astrolabe* and *Zélée*, Jacques Bernard Hombron or Honore Jacquinot. Date: December 1836–January 1837. Sex/age: Adult. Acquisition: from the Paris museum in 1842.

If 1835 is correct: Loc: Falklands (51°45'S 59°00'W). Col: voyage *La Coquille*, P. Lesson / P. Garnot. Date: November–December 1822. Sex/age: adult. Acquisition: June 1835 received in exchange with the Paris Museum.

**King Penguin** *Aptenodytes patagonicus* J.F. Miller, 1778 [RMNH.AVES.107286]. Loc: Falklands (ca. 51° 41' 0" S, 59° 10' 0" W). Date: November–December 1822. Col: voyage *La Coquille*, P. Lesson / P. Garnot. Age/sex: adult. Acq: June 1835 received in exchange with the Paris Museum. Status: extant, accessed 18 December 2012. Tax: mounted. Pub: Lesson & Garnot 1826–1830; Schlegel 1867.

**Pedestal label:** [one hand] Cat n°2 / *Aptenodytes patachonica* / Forster / Falkland eilanden.

**Pedestal underside:** [one hand] *Spheniscus pennantii* / Cat n°2 / Iles Malouines.

**Schlegel 1867** (Tome VI, 33: 3): *Spheniscus pennantii*, Cat 2, Adulte, Iles Malouines, acquis en 1835.

**Remark:** The collection site on the label, underside and in Schlegel 1867 differ. The ageing is only present in Schlegel 1867. Notable is the lack of the note appearing in Schlegel 1867 that it was purchased in 1835, this is missing from both label as underside. Only Schlegel's handwriting appears under the base of the pedestal.

**King Penguin** *Aptenodytes patagonicus* J.F. Miller, 1778 [—]. Loc: Falklands (ca. 51° 41' 0" S, 59° 10' 0" W). Date: —. Col: —. Age/sex: adult. Acq: —. Status: non-extant, not found. Tax: —. Pub: Schlegel 1867.

**Schlegel 1867** (Tome VI, 33: 3): *Spheniscus pennantii*, Cat 2, Adulte, Malouines.

**Remark:** Little information is available.

**Gentoo Penguin** *Pygoscelis papua papua* (J.R. Forster, 1781) [RMNH.AVES.107252]. Loc: Falkland (ca. 51° 41' 0" S, 59° 10' 0" W). Date: —. Col: —. Age/sex: adult. Acq: via Gustav Adolph Frank Sr. Status: extant, accessed 18 December 2012. Tax: mounted. Pub: Schlegel 1867.

**Pedestal label:** [one hand] Cat n°1 / *Pygoscelis papua* / (Forster) / Falkland eilanden.

**Pedestal underside:** [one hand] *Spheniscus papua* / *Aptenodytes papuaensis* / Cat 1 / Manchot (unreadable) Sonner. Pl 115 / (unreadable) parfaite / Par Frank / Iles Falkland / Malouines.

**Schlegel 1867** (Tome VI, 33: 5): *Spheniscus papua*, Cat 1, Adulte, Malouines.

**Remark:** The collection site on the label, underside and in Schlegel 1867 differ. The ageing is only present in Schlegel



1867. The bird was acquired through the Amsterdam-based dealer Gustav Adolph Frank (see Kelp Goose RMNH.AVES.230433). Only Schlegel's handwriting appears under the base of the pedestal.

**Gentoo Penguin** *Pygoscelis papua papua* (J.R. Forster, 1781) [RMNH.AVES.107253]. Loc: Possibly collected at Ciudad del Rey Don Felipe or elsewhere in the straits of Patagonia, Chile (not the Falklands). Date: December 1836–January 1837. Col: collected at the expeditions with the *Astrolabe* and *Zélée*, Jacques Bernard Hombron or Honore Jacquinot. Age/sex: adult ♀. Acq: from the Paris museum in 1842. Status: extant, accessed 18 December 2012. Tax: mounted. Pub: Blanchard et al. 1854; Schlegel 1867.

**Pedestal label:** [one hand] Cat n°2 / *Pygoscelis papua* / (Forster) / ♀ / Falkland eilanden.

**Pedestal underside:** [two hands] *Spheniscus papua* / *Aptenodytes papuaensis* ♀ / ♀ / Sonnerat / Cat 2 / Voyage *Astrolabe* / Voy *Astrolabe* a Zelee / Malouines / Malouines.

**Schlegel 1867** (Tome VI, 33: 5): *Spheniscus papua*, Cat 2, Femelle adulte, Malouines, voyage de l'*Astrolabe* et de la *Zelee*.

**Remark:** The collection site on the label, underside and in Schlegel 1867 differ. The sexing of the specimen is noted in all sources, the ageing however is only present in Schlegel 1867. The label, underside, and Schlegel 1867 all identify the specimen as female, but only the latter identifies it as an adult. Two name sources are mentioned, Forster on the label and Sonnerat on the underside. Arrived in 1842 from the Paris Museum (part on exchange between Temminck and Paris).

**Chinstrap Penguin** *Pygoscelis antarcticus* (J.R. Forster, 1781) [RMNH.AVES.107250]. Loc: Possibly collected at Ciudad del Rey Don Felipe or elsewhere in the straits of Patagonia, Chile (not the Falklands). Date: December 1836–January 1837. Col: collected at the expeditions with the *Astrolabe* and *Zélée*, Jacques Bernard Hombron or Honore Jacquinot. Age/sex: adult. Acq: from the Paris museum in 1842. Status: extant, accessed 18 December 2012. Tax: mounted. Pub: Blanchard et al. 1854; Schlegel 1867.

**Pedestal label:** [one hand] Cat n°1 / *Pygoscelis antarctica* / (Forster) / Falkland eilanden.

**Pedestal underside:** [one hand] *Spheniscus antarctica* / *Milv-* ~~er~~ ~~pt~~ ~~40~~ / (unreadable crossed) / Cat 1 / (unreadable crossed) / M Paris *Astrolabe* et de *Zelee* / (unreadable) / Regiones Ant-  
arctiques / Malouines.

**Schlegel 1867** (Tome VI, 33: 5–6): Adulte, Malouines, voyage de l'*Astrolabe* et de la *Zelee*.

**Remark:** The collection site on the label, underside and in Schlegel 1867 differ. Only in Schlegel 1867 the specimen is aged. Arrived in 1842 from the Paris Museum (part on exchange between Temminck and Paris Museum). Only Schlegel's handwriting appears under the base of the pedestal.

**Macaroni Penguin** *Eudyptes chrysolophus* J.F. von Brandt, 1837 [RMNH.AVES.107247]. Loc: Falkland (ca. 51° 41' 0" S, 59° 10' 0" W). Date: —. Col: —. Age/

sex: adult. Acq: via Gustav Adolph Frank Sr. Status: extant, accessed 18 December 2012. Tax: mounted. Pub: Schlegel 1867.

**Pedestal label:** [two hands] *Eudyptes chrysolophus* (Brandt) Cat. n°1 / *Catarrhactes chrysolophus* / Brandt / ♂ / Frank / Falkland Eilanden.

**Pedestal underside:** [three hands] *Spheniscus diamematus* / *chrysolophus* / ♂ adult / Gould Proc an 1837 p 3 / *Aptenodytes cirrhata* Miller pl (unreadable) / Cat 1 / pr Frank / (line unreadable) / Bec rouge (two unreadable words) / Iles Falkland.

**Schlegel 1867** (Tome VI, 33: 8): Adulte, Malouines.

**Remark:** The collection site on the label, underside and in Schlegel 1867 differ. The label, underside, and Schlegel 1867 all identify the specimen as male, but only the latter identifies it as an adult. The bird was acquired through the Amsterdam-based dealer Gustav Adolph Frank (see Kelp Goose RMNH.AVES.230433).

**Fjordland Penguin** *Eudyptes pachyrhynchus* G.R. Gray, 1845 [RMNH.AVES.107258]. Loc: Falkland (ca. 51° 41' 0" S, 59° 10' 0" W). Date: —. Col: —. Age/sex: adult. Acq: via Gustav Adolph Frank Sr. Status: extant, accessed 18 December 2012. Tax: mounted. Pub: Schlegel 1867.

**Pedestal label:** [two hands] *Eudyptes pachyrhynchus* Cat. n°2 / G.R. Gray / *Catarrhactes pachyrhynchus* / (G.R. Gray) / Falkland eilanden.

**Pedestal underside:** [one hand] (unreadable) Gould / *Spheniscus chrysocome* / ~~unreadable~~ / Cat 2 / Gould Proc 1857 p 310. / (unreadable) / île Falkland.

**Pedestal underside sticker:** Un très vieux et bel individu de la Nouv. Zél., et appartenant à M. Frank est d'une taille un peu plus forte, le bec est plus grand et les teintes foncées sont d'un noir plus intense, Schlegel.

**Schlegel 1867** (Tome VI, 33: 6–7): Adulte, Malouines.

**Remark:** The collection site on the label, underside and in Schlegel 1867 differ. Ageing only present in Schlegel 1865, note the different Latin names. The bird was acquired through the Amsterdam-based dealer Gustav Adolph Frank (see Kelp Goose RMNH.AVES.230433).

**Fjordland Penguin** *Eudyptes pachyrhynchus* G.R. Gray, 1845 [RMNH.AVES.107249]. Loc: Beauchene Island, Falkland (ca. 52° 53' 11" S, 59° 12' 13" W). Date: —. Col: —. Age/sex: adult. Acq: via Gustav Adolph Frank Sr. Status: extant, accessed 18 December 2012. Tax: mounted. Pub: Schlegel 1867.

**Pedestal label:** [two hands] *Eudyptes pachyrhynchus* Cat n°3 / (G.R. Gray) / *Catarrhactes pachyrhynchus* / (G.R. Gray) / Beauchene / Frank, 1861 / Falkland eilanden.

**Pedestal underside:** [three hands] *Spheniscus chrysolophus* / (unreadable) in Gould / Cat n°2 / île Beauchesne / Frank 1861 / Malouines.

**Pedestal underside sticker:** Bought from Beauchene / island by the sealers / Frank 1861 [two hands].

**Schlegel 1867** (Tome VI, 33: 7): *Spheniscus chrysolophus*, Cat 2, Albinos, rapporte de l'île Beauchene, Malouines, 1861.

**Remark:** The collection site on the label, underside and in Schlegel 1867 differ. The origin is only documented at the label (Frank). The bird was acquired through the Amster-



dam-based dealer Gustav Adolph Frank (see Kelp Goose RMNH.AVES.230433).

**Magellanic Penguin** *Spheniscus magellanicus* J.R. Forster, 1781 [RMNH.AVES.107261]. Loc: Falkland (ca. 51° 41' 0" S, 59° 10' 0" W). Date: —. Col: —. Age/sex: adult. Acq: via Gustav Adolph Frank Sr. Status: extant, accessed 18 December 2012. Tax: mounted. Pub: Schlegel 1867.

**Pedestal label:** [one hand] Cat n°2 / *Spheniscus demersus* / *magellanicus* / (Forster) / Frank / Falkland eilanden.

**Pedestal underside:** [one hand] *Spheniscus demersus* / Cat N 4 / Nov spec! = *Apt. demersa* var C. Vieillot / Finsch / ex Perneti Voy aux îles Malouines II p 17 / Perneti, P. / Frank / Îles Malouines.

**Schlegel 1867** (Tome VI, 33: 10–12): *Spheniscus demersus*, Cat 4, Individu au passage à la livrée parfaite, Malouines.

**Remark:** The collection site on the label, underside and in Schlegel 1867 differ. Frank is missing from Schlegel. Finsch thought it was a new species for science. The bird was acquired through the Amsterdam-based dealer Gustav Adolph Frank (see Kelp Goose RMNH.AVES.230433). Only Schlegel's handwriting appears under the base of the pedestal.

**Magellanic Penguin** *Spheniscus magellanicus* J.R. Forster, 1781 [RMNH.AVES.107262]. Loc: Falkland (ca. 51° 41' 0" S, 59° 10' 0" W). Date: —. Col: —. Age/sex: Adult. Acq: via Gustav Adolph Frank Sr. Status: extant, accessed 18 December 2012. Tax: mounted. Pub: Schlegel 1867.

**Pedestal label:** [one hand] Cat n°3 / *Spheniscus demersus* / *magellanicus* / (Forster) / Frank / Falkland eilanden.

**Pedestal underside:** [one hand] sp nov. (unreadable) Finsch / Black-footed Penguin (unreadable) / *Spheniscus demersus* / Cat N°5 / Via Frank / Malouines.

**Schlegel 1867** (Tome VI, 33: 10–12): *Spheniscus demersus*, Cat 5, Individu au plumage imparfait, mais offrant la taille des adultes, Malouines.

**Remark:** The collection site on the label, underside and in Schlegel 1867 differ. Notable if difference in Latin names at the label and underside, the latter is in line with Schlegel 1867. The bird was acquired through the Amsterdam-based dealer Gustav Adolph Frank (see Kelp Goose RMNH.AVES.230433).

## PROCELLARIIDAE

**Slender-billed Prion** *Pachyptila belcheri* Mathews, 1912 [RMNH.AVES.107095]. Loc: Falkland (ca. 51° 41' 0" S, 59° 10' 0" W). Date: February 1860. Col: —. Age/sex: —. Acq: via John Gould and Gustav Adolph Frank Sr. Status: extant, accessed 18 December 2012. Tax: mounted. Pub: Schlegel 1863b.

**Pedestal label:** [one hand] Cat.n°2 / *Prion ariel* / Gould / Februari 1860 / Frank 1863 / Falkland eilanden.

**Pedestal underside:** [one hand] *Procellaria ariel* Gould / *Fr. turtur* Kuhl, Dser, p 143, pl8 / Cat N°2 / February 1860 / Falkland Island / Frank / 1863.

**Schlegel 1863b** (Tome VI, 22: 18): Individu des Mers de l'Australie, obtenus en 1863 de Mr Gould.

**Remark:** The collection site on the label, underside and in Schlegel 1867 differ, and two birds are involved (Schlegel 1863b: 22). Notable is the lack of catalogue number in Schlegel 1863b. The bird was acquired through the Amsterdam-based dealer Gustav Adolph Frank (see Kelp Goose RMNH.AVES.230433). A specimen is missing from HMS *Beagle* (Steinheimer 2004). Only Schlegel's handwriting appears under the base of the pedestal.

## PHALACROCORACIDAE

**Rock Shag** *Phalacrocorax magellanicus* J.F. Gmelin, 1789 [RMNH.AVES.107973]. Loc: Magdalena Island (ca. 51° 41' 0" S, 59° 10' 0" W). Date: —. Col: —. Age/sex: adult ♂. Acq: via Gustav Adolph Frank Sr. Status: extant, accessed 18 December 2012. Tax: mounted. Pub: Schlegel 1863a.

**Pedestal label:** [two hands] *Phalacrocorax magellanicus* / *Graculus magellanicus* / m. Cat N° 1 / Malouines.

**Pedestal underside:** [one hand] *Graculus* / *Carbo magellanicus* ♂ / Forster voy / Cat No 1 / Frank / Île Magdalena / Malouines.

**Schlegel 1863a** (Tome VI, 21: 21): *Graculus magellanicus*, Cat 1, ♂ adulte, Malouines.

**Remark:** The collection site on the label, underside and in Schlegel 1863a differ. Ageing only appears in Schlegel 1853a as aged and sexed. Due to the remark of Magdalena Island (52°55'S 70°35'W) on the pedestal underside, the known expedition that visited this place was the voyage de l'*Astrolabe* et de la *Zelee* and could be the source. The bird was acquired through the Amsterdam-based dealer Gustav Adolph Frank (see Kelp Goose RMNH.AVES.230433). Only Schlegel's handwriting appears under the base of the pedestal.

**Rock Shag** *Phalacrocorax magellanicus* J.F. Gmelin, 1789 [RMNH.AVES.107972]. Loc: Magdalena Island (ca. 51° 41' 0" S, 59° 10' 0" W). Date: —. Col: —. Age/sex: adult ♀. Acq: via Gustav Adolph Frank Sr. Status: extant, accessed 18 December 2012. Tax: mounted. Pub: Schlegel 1863a.

**Pedestal label:** [two hands] *Phalacrocorax magellanicus* / *Graculus magellanicus* / f. Cat N° 2 / Malouines.

**Tag:** [one hand] *Graculus magellanicus* / Cat: No 2 ♀ / Frank. Malouines.

**Pedestal underside:** [one hand] *Graculus* / *Carbo magellanicus* / Forster voy / Cat N° 2 / Frank / Malouines.

**Note Pedestal label:** [one hand] Île Magdalena / (unreadable) / le brun / (unreadable) orange / (unreadable).

**Schlegel 1863a** (Tome VI, 21: 21): *Graculus magellanicus*, Cat 2, Femelle adulte, Malouines.

**Remark:** The collection site on the label, underside and in Schlegel 1863a differ. The tag, and Schlegel 1863a all identify the specimen as female, but only the latter identifies it as an adult. Due to the remark of Magdalena Island (52°55'S 70°35'W) on the pedestal underside, the known expedition that visited this place was the voyage de l'*Astrolabe* et de la *Zelee* and could be the source. The bird was acquired through the Amsterdam-based dealer Gustav Adolph Frank (see Kelp Goose RMNH.AVES.230433). Only Schlegel's handwriting appears under the base of the pedestal.

**Rock Shag** *Phalacrocorax magellanicus* J.F. Gmelin, 1789 [RMNH.AVES.107971]. Loc: East Falkland (ca. 51° 41' 40" S, 57° 51' 10" W). Date: in 1860. Col: C.C. Abbott. Age/sex: ♂. Acq: via John Gould and Gustav Adolph Frank Sr. Status: extant, accessed 18 December 2012. Tax: mounted. Pub: Abbott 1860, 1861; Gould 1859; Schlegel 1863a; Sclater 1860, 1861, 1862.

**Pedestal label:** [two hands] *Phalacrocorax magellanicus* / *Graculus magellanicus* / m. Cat N°3 / voy. Cap. Abbot / 1861 / Malouines.

**Tag:** [one hand] *Graculus magellanicus* / ♂ Cat.3 / Abbot / Frank 1861 / Oost-Falkland.

**Pedestal underside:** [one hand] *Graculus magellanicus* / ♂ / Cat N°3 / Abbot / Frank 1861 / Oost-Falkland.

**Schlegel 1863a** (Tome VI, 21: 21): *Graculus magellanicus*, Cat 3, Male, habit de passage, ile orientale des Malouines, voyage du capitaine Abbot, acquis en 1861.

**Remark:** The name giving of the location of collecting is differs. The label, underside, and Schlegel 1866 all identify the specimen as male, but is not present at the label. The bird was acquired through the Amsterdam-based dealer Gustav Adolph Frank and arrived on 21 April 1861 (see Kelp Goose RMNH.AVES.230433 as for C.C. Abbott). Only Schlegel's handwriting appears under the base of the pedestal.

## CHIONIDAE

**Snowy Sheathbill** *Chionis albus* J.F. Gmelin, 1789 [RMNH.AVES.223734]. Loc: —. Date: —. Col: —. Age/sex: —. Acq: —. Status: extant, accessed 11 February 2013. Tax: skin. Pub: —.

**Tag:** [one hand] Kat.No1. Ad / *Chionis alba* (Gml) – Cat. Br. M. XXIV. p 710 / Tem.Pl.col.509 (not Type) / “Falkland Islands” / No origin! / “Nouv.Zelande ‘Temmik” / “Chatham Isl. Schlegel.

**Tag (Backside):** [one hand] *Chionis vaginalis*, Forst. -*vaginalis* / *alba*, Sull, – bec en fourreau blanc / Tem. Pl. Col 509. Nouv Zelande “old / label written by Temminck”.

**Pedestal underside:** removed.

**Remark:** Due to two different locations mentioned on the tag, is uncertain if the specimen was collected at either “New Zealand”, “Chatham Islands” or the “Falklands”. The bird was skinned after first been mounted, the information on the pedestal underside and the label is not contained. Possibly this was transcribed on the tag by Otto Finsch.

## HAEMATOPODIDAE

**Magellanic Oystercatcher** *Haematopus leucopodus* Garnot, 1826 [RMNH.AVES.224449]. Loc: Falkland (ca. 51° 41' 0" S, 59° 10' 0" W). Date: —. Col: —. Age/sex: adult. Acq: via Gustav Adolph Frank Sr. Status: extant, accessed 18 December 2012. Tax: mounted. Pub: Abbott 1860, 1861; Gould 1859; Schlegel 1865; Sclater 1860, 1861, 1862.

**Pedestal label:** [one hand] *Haematopus luctuosus* / ad. Cat: 1 / îles Malouines.

**Pedestal underside:** [one hand] *Haematopus* (unreadable and crossed) / (3 words unreadable and crossed) / *luctuosus* Cuv / Frank / Cat. N°1 / Malouines.

**Schlegel 1865** (Tome IV, 29:74): *Haematopus luctuosus*, Cat 1, Adulte, îles Malouines.

**Remark:** The collection site on the label, underside and in Schlegel 1865 differ. Both the underside and Schlegel 1866 identify the specimen as female, but only the latter identifies it as an adult. The bird was acquired through the Amsterdam-based dealer Gustav Adolph Frank (see Kelp Goose RMNH.AVES.230433), note the source is only present at the underside. Only Schlegel's handwriting appears under the base of the pedestal.

**Magellanic Oystercatcher** *Haematopus leucopodus* Garnot, 1826 [RMNH.AVES.224449]. Loc: East Falkland (ca. 51° 41' 40" S, 57° 51' 10" W). Date: in either 1858 or 1859. Col: C.C. Abbott. Age/sex: adult. Acq: via John Gould and Gustav Adolph Frank Sr. Status: extant, accessed 18 December 2012. Tax: mounted. Publ: Abbott 1860, 1861; Gould 1859; Schlegel 1865; Sclater 1860, 1861, 1862.

**Pedestal label:** [one hand] *Haematopus luctuosus* / ad. Cat: 2. Ile Orient des / Malouines / Mr Abbot Stanley / 1860.

**Pedestal underside:** [one hand] *Haematopus luctuosus* / Cat. N°2 / Capt / Abbot Stanley / 1860 / Oost-Falkland.

**Schlegel 1865** (Tome IV, 29:74): *Haematopus luctuosus*, Cat 2, Adulte, ile orientale des Malouines, voyage du Capitaine Abbot Stanley, acquis en 1860.

**Remark:** The collection site on the label, underside and in Schlegel 1865 differ. The name Abbott was transcribed incorrectly at label, underside and in Schlegel. Both the label and Schlegel 1865 identify the specimen as adult, it lacks at the underside. The bird was acquired through the Amsterdam-based dealer Gustav Adolph Frank and arrived on 30 April 1860 (see Kelp Goose RMNH.AVES.230433 as for C.C. Abbott). Only Schlegel's handwriting appears under the base of the pedestal.

## CHARADRIIDAE

**Two-banded Plover** *Charadrius falklandicus* Latham, 1790 [RMNH.AVES.223949]. Loc: Falkland (ca. 51° 41' 0" S, 59° 10' 0" W). Date: —. Col: —. Age/sex: adult. Acq: via Gustav Adolph Frank Sr. Status: extant, accessed 18 December 2012. Tax: mounted. Pub: Schlegel 1865.

**Pedestal label:** [one hand] *Charadrius falklandicus* / Ad Cat 1 / Malouines.

**Pedestal underside:** [one hand] *Charadrius falklandicus* / Lath / (unreadable words) / pr Frank Cat N1 / Malouines.

**Schlegel 1865** (Tome IV, 29: 36): *Charadrius falklandicus*, Cat 1, Adulte, Malouines.

**Remark:** The ageing however is absent on the underside. Handwriting from Temminck indicates an old specimen, possible secured due to one of the exchanges with the Parisian Museum. The bird was acquired through the Amsterdam-based dealer Gustav Adolph Frank (see Kelp Goose RMNH.AVES.230433), note the source is only present at the

underside. Only Schlegel's handwriting appears under the base of the pedestal.

**Two-banded Plover** *Charadrius falklandicus* Latham, 1790 [RMNH.AVES.223954]. Loc: East Falkland (ca. 51° 41' 40" S, 57° 51' 10" W). Date: in either 1858 or 1859. Col: C.C. Abbott. Age/sex: adult ♂. Acq: via John Gould and Gustav Adolph Frank Sr. Status: extant, accessed 18 December 2012. Tax: mounted. Pub: Abbott 1860, 1861; Gould 1859; Schlegel 1865; Sclater 1860, 1861, 1862.

**Pedestal label:** [one hand] *Charadrius falklandicus* / ♂ ad. Cat: 2 / Abbot Stanley / 1860 / Ile orient des / Malouines.

**Pedestal underside:** [one hand] *Charadrius / falklandicus* / ♂ / Cat N°2 / Capt. / Abbot Stanley / 1860 / Oost Falkland.

**Schlegel 1865** (Tome IV, 29: 36): *Charadrius falklandicus*, Cat 2, ♂ adult, ile orientale des Malouines, voyage du Capitaine Abbot Stanley, acquis en 1860.

**Remark:** The collection site on the label, underside and in Schlegel 1865 differ. The name Abbott was transcribed incorrectly at label, underside and in Schlegel. The label, underside, and Schlegel 1866 all identify the specimen as male, but only label and Schlegel identifies it as an adult ♂. The bird was acquired through the Amsterdam-based dealer Gustav Adolph Frank (see Kelp Goose RMNH.AVES.230433 as for C.C. Abbott). Only Schlegel's handwriting appears under the base of the pedestal.

**Two-banded Plover** *Charadrius falklandicus* Latham, 1790 [RMNH.AVES.223955]. Loc: East Falkland (ca. 51° 41' 40" S, 57° 51' 10" W). Date: in either 1858 or 1859. Col: C.C. Abbott. Age/sex: adult ♀. Acq: via John Gould and Gustav Adolph Frank Sr. Status: extant, accessed 18 December 2012. Tax: mounted. Pub: Abbott 1860, 1861; Gould 1859; Schlegel 1865; Sclater 1860, 1861, 1862.

**Pedestal label:** [one hand] *Charadrius falklandicus* / 1860. ♀ ad Cat: 3 / Ile orient des / Abbot Stanley / Malouines.

**Pedestal underside:** [one hand] *Charadrius / falklandicus* / ♀ / Cat N° 3 / eye black / Capt. Abbot / Stanley / 1860 / Oost Falkland.

**Schlegel 1865** (Tome IV, 29: 36): *Charadrius falklandicus*, Cat 3, ♀ adult, ile orientale des Malouines, voyage du Capitaine Abbot Stanley, acquis en 1860.

**Remark:** The collection site on the label, underside and in Schlegel 1865 differ. The name Abbott was transcribed incorrectly at label, underside and in Schlegel. The label, underside, and Schlegel 1866 all identify the specimen as female, but only the label and Schlegel identifies it as an adult ♀. The bird was acquired through the Amsterdam-based dealer Gustav Adolph Frank see Kelp Goose RMNH.AVES.230433 as for C.C. Abbott). Only Schlegel's handwriting appears under the base of the pedestal.

**Rufous-chested Plover** *Charadrius modestus* M.H.C. Lichteinstein, 1823 [RMNH.AVES.226062]. Loc: East Falkland (ca. 51° 41' 40" S, 57° 51' 10" W). Date: in either 1858 or 1859. Col: C.C. Abbott. Age/sex: adult ♂. Acq: via John Gould and Gustav Adolph Frank Sr. Status: extant, accessed 18 December 2012. Tax: mounted.

Publ: Abbott 1860, 1861; Gould 1859; Schlegel 1865; Sclater 1860, 1861, 1862.

**Pedestal label:** [one hand] *Morinellus modestus* / ♂ Cat: 1 / Ile Orients des / Mr. Abbot Stanley / 1860 / Malouines.

**Pedestal underside:** [one hand] *Morinellus modestus* / ♂ / Cat N°1 / Capt. / Abbot Stanley / 1860 / Oost Falkland.

**Schlegel 1865** (Tome IV, 29: 48): *Morinellus modestus*, Cat 1, ♂ au plumage parfait, ile orientale des Malouines, voyage de Mr. Abbot Stanley, acquis en 1860.

**Remark:** The collection site on the label, underside and in Schlegel 1865 differ. The name Abbott was transcribed incorrectly at label, underside and in Schlegel. The label, underside, and Schlegel 1865 all identify the specimen as male, but only the latter identifies it as an adult. The bird was acquired through the Amsterdam-based dealer Gustav Adolph Frank (see Kelp Goose RMNH.AVES.230433 as for C.C. Abbott). Only Schlegel's handwriting appears under the base of the pedestal.

**Rufous-chested Plover** *Charadrius modestus* M.H.C. Lichteinstein, 1823 [RMNH.AVES.226063]. Loc: East Falkland (ca. 51° 41' 40" S, 57° 51' 10" W). Date: in either 1858 or 1859. Col: C.C. Abbott. Age/sex: adult ♀. Acq: via John Gould and Gustav Adolph Frank Sr. Status: extant, accessed 18 December 2012. Tax: mounted. Pub: Abbott 1860, 1861; Gould 1859; Schlegel 1865; Sclater 1860, 1861, 1862.

**Pedestal label:** [one hand] *Morinellus modestus* / ♀ Cat: 2 / ile Orients des / Mr. Abbot Stanley / 1860 / Malouines.

**Pedestal underside:** [one hand] *Morinellus modestus* / ♀ Vat. N° 2 / eye black / Capt. / Abbot Stanley / 1860 / Oost falkland.

**Schlegel 1865** (Tome IV, 29: 48): *Morinellus modestus*, Cat 2, ♀ au plumage parfait, ile orientale des Malouines, voyage de Mr. Abbot Stanley, acquis en 1860.

**Remark:** The collection site on the label, underside and in Schlegel 1865 differ. The name Abbott was transcribed incorrectly at label, underside and in Schlegel. The label, underside, and Schlegel 1865 all identify the specimen as female, but only the latter identifies it as an adult. The bird was acquired through the Amsterdam-based dealer Gustav Adolph Frank (see Kelp Goose RMNH.AVES.230433 as for C.C. Abbott). Only Schlegel's handwriting appears under the base of the pedestal.

**Southern Lapwing** *Vanellus chilensis chilensis* (Molina, 1782) [RMNH.AVES.31529]. Loc: East Falkland (ca. 51° 41' 40" S, 57° 51' 10" W). Date: in either 1858 or 1859. Col: C.C. Abbott. Age/sex: -. Acq: via John Gould and Gustav Adolph Frank Sr. Status: extant, accessed 18 December 2012. Tax: mounted. Pub: Abbott 1860, 1861; Gould 1859; Schlegel 1865; Sclater 1860, 1861, 1862.

**Pedestal label:** [two hands] *occidentalis* Cat 7 / *Vanellus cayennensis* / ad. cat. 9 / Ile orientale des / Mr. Abbot Stanley / 1860 / Malouines.

**Pedestal underside:** [one hand] *Vanellus cayennensis* / Capt. / Cat. N° 9 / Abbot Stanley / 1860 / Oostfalkland.

**Schlegel 1865** (Tome IV, 29: 57–58): *Vanellus cayennensis*, Cat 9, Adulte a tarse seulement longs de 2 pouces, ile orientale des Malouines, voyage de Mr Abbot Stanley, acquis en 1860.



**Remark:** The collection site on the label, underside and in Schlegel 1865 differ. The name Abbott was transcribed incorrectly at label, underside and in Schlegel. The bird was acquired through the Amsterdam-based dealer Gustav Adolph Frank (see Kelp Goose RMNH.AVES.230433 as for C.C. Abbott). Only Schlegel's handwriting appears under the base of the pedestal.

#### THINOCORIDAE

**Least Seedsnipe** *Thinocorus rumicivorus rumicivorus* Eschscholtz, 1829 [RMNH.AVES.87538]. Loc: East Falkland (ca. 51° 41' 40" S, 57° 51' 10" W). Date: in either 1858 or 1859. Col: C.C. Abbott. Age/sex: ♂. Acq: via John Gould and Gustav Adolph Frank Sr. Status: extant, accessed 11 February 2013. Tax: mounted (syn-type). Publ: Abbott 1860, 1861; Gould 1859; Sclater 1860, 1861, 1862.

**Pedestal label:** not present.

**Pedestal underside:** [one hand] Cat. 5 / ♂ / 1860 / Capt / Abbot Stanley / Oost Falkland.

**Remark:** The bird was acquired through the Amsterdam-based dealer Gustav Adolph Frank and arrived on 30 April 1860 (see Kelp Goose RMNH.AVES.230433 as for C.C. Abbott). Only Schlegel's handwriting appears under the base of the pedestal.

#### SCOLOPACINAE

**Hudsonian Godwit** *Limosa haemastica* Linnaeus, 1758 [RMNH.AVES.31529]. Loc: East Falkland (ca. 51° 41' 40" S, 57° 51' 10" W). Date: in either 1858 or 1859. Col: C.C. Abbott. Age/sex: adult ♂. Acq: via John Gould and Gustav Adolph Frank Sr. Status: extant, accessed 18 December 2012. Tax: mounted. Publ: Abbott 1860, 1861; Gould 1859; Schlegel 1864; Sclater 1860, 1861, 1862.

**Pedestal label:** [one hand] *Limosa hudsonica* / 1860 ♂ Cat: 1 / Capt.<sup>nc</sup> Abbot. Ile Or des Malouines.

**Pedestal underside:** [one hand] *Limosa hudsonica* / Cat 1 / ♂ / Cap / Abbot Stanley / Oost Falkland.

**Schlegel 1864** (Tome V, 27: 22–23): *Limosa hudsonica*, Cat 1, ♂ au plumage parfait de noce, ile orientale des Malouines, voyage du Capitaine Abbot, acquis en 1860.

**Remark:** The collection site on the label, underside and in Schlegel 1864 differ. The name Abbott was transcribed incorrectly at label, underside and in Schlegel. The label, underside, and Schlegel 1864 all identify the specimen as male, but only the latter identifies it as an adult. The bird was acquired through the Amsterdam-based dealer Gustav Adolph Frank (see Kelp Goose RMNH.AVES.230433 as for C.C. Abbott). Only Schlegel's handwriting appears under the base of the pedestal.

**White-rumped Sandpiper** *Calidris fuscicollis* Vieillot, 1819 [RMNH.AVES.223070]. Loc: Falklands (ca. 51° 41' 0" S, 59° 10' 0" W). Date: in either 1858 or 1859. Col: C.C. Abbott. Age/sex: —. Acq: via John Gould and Gustav Adolph Frank Sr. Status: extant, accessed 11 February 2013. Tax: mounted. Publ: Abbott 1860,

1861; Gould 1859; Schlegel 1864; Sclater 1860, 1861, 1862.

**Pedestal label:** [two hands] *Tringa Bonapartei* / Cat. 10 6 / Stanley 1860 / Malouines.

**Pedestal underside:** [two hands] *Tringa Bonapartei* / Cat N° 10 / Capt / Abbott Stanley / 1860 / Oost Falkland.

**Schlegel 1864** (Tome V, 27: 43–43): *Tringa bonapartei*, Cat 10, Individu dans la livrée d'hiver. Tués dans l'île orientale des Malouines voyage du Capitaine Abbot Stanley, acquis en 1860.

**Remark:** The collection site on the label, underside and in Schlegel 1864 differ. The name Abbott was transcribed incorrectly at label, underside and in Schlegel. The bird was acquired through the Amsterdam-based dealer Gustav Adolph Frank (see Kelp Goose RMNH.AVES.230433 as for C.C. Abbott).

**White-rumped Sandpiper** *Calidris fuscicollis* Vieillot, 1819 [RMNH.AVES.220882]. Loc: Falklands (ca. 51° 41' 0" S, 59° 10' 0" W). Date: in either 1858 or 1859. Col: C.C. Abbott. Age/sex: Adult. Acq: via John Gould and Gustav Adolph Frank Sr. Status: extant, accessed 11 February 2013. Tax: mounted. Publ: Abbott 1860, 1861; Gould 1859; Schlegel 1864; Sclater 1860, 1861, 1862.

**Pedestal Label:** [two hands] *Tringa Bonapartei* / Cat. 11 7 / Stanley 1860. Malouines.

**Pedestal underside:** [two hands] *Tringa / Bonapartei* / Cat N° 11 / Abbot / 1860 / Iles Falkland.

**Schlegel 1864** (Tome V, 27: 43–43): *Tringa bonapartei*, Cat 11, Individu dans la livrée d'hiver. Tués dans l'île orientale des Malouines voyage du Capitaine Abbot Stanley, acquis en 1860.

**Remark:** The collection site on the label, underside and in Schlegel 1864 differ. The name Abbott was transcribed incorrectly at label, underside and in Schlegel. The bird was acquired through the Amsterdam-based dealer Gustav Adolph Frank (see Kelp Goose RMNH.AVES.230433 as for C.C. Abbott).

**White-rumped Sandpiper** *Calidris fuscicollis* Vieillot, 1819 [RMNH.AVES.220883]. Loc: Falklands (ca. 51° 41' 0" S, 59° 10' 0" W). Date: in either 1858 or 1859. Col: C.C. Abbott. Age/sex: —. Acq: via John Gould and Gustav Adolph Frank Sr. Status: extant, accessed 11 February 2013. Tax: mounted. Publ: Abbott 1860, 1861; Gould 1859; Schlegel 1864; Sclater 1860, 1861, 1862.

**Pedestal Label:** [two hands] *Tringa Bonapartei* / Cat. 12 8. / Stanley 1860 / Malouines.

**Pedestal underside:** [one hand] *Tringa Bonapartei* / Cat. N 12. / Capt Abbott / Stanley / 1860. / OostFalkland.

**Schlegel 1864** (Tome V, 27: 43–43): *Tringa bonapartei*, Cat 12, Individu dans la livrée d'hiver. Tués dans l'île orientale des Malouines voyage du Capitaine Abbot Stanley, acquis en 1860.

**Remark:** The collection site on the label, underside and in Schlegel 1864 differ. The name Abbott was transcribed incorrectly at label, underside and in Schlegel. The bird was acquired through the Amsterdam-based dealer Gustav Adolph Frank (see Kelp Goose RMNH.AVES.230433 as for C.C. Abbott). Only Schlegel's handwriting appears under the base of the pedestal.

**South American Snipe** *Gallinago paraguaiiae magellanica* Vieillot, 1816 [RMNH.AVES.220457]. Loc: East Falkland (ca. 51° 41' 40" S, 57° 51' 10" W). Date: in either 1858 or 1859. Col: C.C. Abbott. Age/sex: adult. Acq: via John Gould and Gustav Adolph Frank Sr. Status: extant, accessed 18 December 2012. Tax: mounted. Publ: Abbott 1860, 1861; Gould 1859; Schlegel 1864; Sclater 1860, 1861, 1862.

**Pedestal label:** [one hand] *Gallinago paraguaiiae* / ad: Cat. 6 Ile orientalis des / Cap: Abbot Stanley. / Malouines / 1860.

**Pedestal underside:** [two hands] *Gallinago paraguaiiae* / *Scolopax magellanica* / King / Cat. 6. / Capt. / Abbot Stanley / 1860 / Oost Falkland.

**Schlegel 1864** (Tome V, 27: 11–12): *Gallinago paraguaiiae*, Cat 6, Adultes, ile orientale des Malouines, voyage du Capitaine Abbot Stanley, acquis en 1860.

**Remark:** The collection site on the label, underside and in Schlegel 1864 differ. Only the underside identifies the specimen as adult. The bird was acquired through the Amsterdam-based dealer Gustav Adolph Frank (see Kelp Goose RMNH.AVES.230433 as for C.C. Abbott).

**South American Snipe** *Gallinago paraguaiiae magellanica* Vieillot, 1816 [RMNH.AVES.220458]. Loc: East Falkland (ca. 51° 41' 40" S, 57° 51' 10" W). Date: in either 1858 or 1859. Col: C.C. Abbott. Age/sex: adult. Acq: via John Gould and Gustav Adolph Frank Sr. Status: extant, accessed 18 December 2012. Tax: mounted. Pub: Abbott 1860, 1861; Gould 1859; Schlegel 1864; Sclater 1860, 1861, 1862.

**Pedestal label:** [two hands] *Gallinago paraguaiiae* / Ad: Cat 7 / Abbot Stanley / Ile or: des: Malouines / 1860.

**Pedestal underside:** [two hands] *Gallinago paraguaiiae* / *Scolopax magellanica* / King / Cat. 7 / Capt. / Abbot Stanley / 1860 / Oost Falkland.

**Schlegel 1864** (Tome V, 27: 11–12): *Gallinago paraguaiiae*, Cat 7, Adultes, ile orientale des Malouines, voyage du Capitaine Abbot Stanley, acquis en 1860.

**Remark:** The collection site on the label, underside and in Schlegel 1864 differ. The name Abbott was transcribed incorrectly at label, underside and in Schlegel. Only Schlegel 1864 identifies the specimen as adult. The bird was acquired through the Amsterdam-based dealer Gustav Adolph Frank (see Kelp Goose RMNH.AVES.230433 as for C.C. Abbott).

## LARIDAE

**Brown-hooded Gull** *Chroicocephalus maculipennis* M.H.C. Lichtenstein, 1823 [RMNH.AVES.207906]. Loc: East Falkland (ca. 51° 41' 40" S, 57° 51' 10" W). Date: in 1858. Col: C.C. Abbott. Age/sex: adult summer-plumage. Acq: via John Gould and Gustav Adolph Frank Sr. Status: extant, accessed 18 December 2012. Tax: mounted. Publ: Abbott 1860, 1861; Gould 1859; Schlegel 1863c; Sclater 1860, 1861, 1862.

**Pedestal label:** [one hand] Cat n°8 / *Larus glaucodes* / Meyen / Kapt. Abbot / 1859 / O. Falkland eilanden.

**Pedestal underside:** [one hand] *Larus glaucotis* / Cat. N°1 / Abbot Stanley / 1859 / Oostfalkland.

**Schlegel 1863c** (Tome VI, 23: 42): *Larus glaucotis*, Cat 1, Adulte, plumage de noces, iles Falkland, voyage du Capitaine Abbot, acquis en 1859.

**Remark:** The collection site on the label, underside and in Schlegel 1863c differ. The name Abbott was transcribed incorrectly at label, underside and in Schlegel. Only Schlegel 1863c identifies the specimen as adult. Erroneously at the label are mentioned Catalogue number 8 (=1). The bird was acquired through the Amsterdam-based dealer Gustav Adolph Frank (see Kelp Goose RMNH.AVES.230433 as for C.C. Abbott). Only Schlegel's handwriting appears under the base of the pedestal.

**Brown-hooded Gull** *Chroicocephalus maculipennis* M.H.C. Lichtenstein, 1823 [RMNH.AVES.207908]. Loc: Falkland (ca. 51° 41' 0" S, 59° 10' 0" W). Date: —. Col: —. Age/sex: adult ♂ summer-plumage. Acq: via Gustav Adolph Frank Sr. Status: extant, accessed 18 December 2012. Tax: mounted. Publ: Schlegel 1863c.

**Pedestal label:** [one hand] cat: n°9 / *Larus glaucodes* / Meyen / Frank / Falkland eilanden.

**Pedestal underside:** [one hand] *Larus glaucotis* / Cat N°2 / Par Frank / Falkland.

**Schlegel 1863c** (Tome VI, 23: 42): *Larus glaucotis*, Cat 2, ♂ au plumage de noces, iles Falkland.

**Remark:** The collection site on the label, underside and in Schlegel 1863c differ. Only Schlegel 1863c identifies the specimen as adult ♂. Erroneously at the label is mentioned Catalogue number 9 (=2). The bird was acquired through the Amsterdam-based dealer Gustav Adolph Frank (see Kelp Goose RMNH.AVES.230433). Only Schlegel's handwriting appears under the base of the pedestal.

**Brown-hooded Gull** *Chroicocephalus maculipennis* M.H.C. Lichtenstein, 1823 [RMNH.AVES.207910]. Loc: Falkland (ca. 51° 41' 0" S, 59° 10' 0" W). Date: —. Col: —. Age/sex: adult ♂ summer-plumage. Acq: —. Status: extant, accessed 18 December 2012. Tax: mounted. Publ: Schlegel 1863c.

**Pedestal label:** [one hand] Cat n°10 / *Larus glaucodes* / Meyen / ♂ / Falkland eilanden.

**Pedestal underside:** [one hand] *Larus glaucotes* ♂ / Meyen / (unreadable 3 words) / Cat N°3 / Iles Falkland.

**Schlegel 1863c** (Tome VI, 23: 42): *Larus glaucotis*, Cat 3, ♂ au plumage de noces, iles Falkland.

**Remark:** The collection site on the label, underside and in Schlegel 1863c differ. The label and Schlegel 1863c identify the specimen as male.

Only Schlegel's handwriting under the base of the pedestal. Erroneously at the label is mentioned Catalogue number 11 (=4). Only Schlegel's handwriting at the base of the pedestal.

**Brown-hooded Gull** *Chroicocephalus maculipennis* M.H.C. Lichtenstein, 1823 [RMNH.AVES.207912]. Loc: Falkland (ca. 51° 41' 0" S, 59° 10' 0" W). Date: —. Col: —. Age/sex: adult ♀ summer-plumage. Acq: via Gustav Adolph Frank Sr. Status: extant, accessed 18 December 2012. Tax: mounted. Publ: Schlegel 1863c.

**Pedestal label:** [one hand] Cat n° 11 / *Larus glaucodes* / Meyen / Falkland eilanden.

**Pedestal underside:** [two hands] *glaucotus* / *Larus* / *glaucotes* / Cat N° 4 / Meyen / (unreadable) / Frank / *Malouines* / Malouines.

**Schlegel 1863c** (Tome I, 32: 42): *Larus glaucotis*, Cat 4, Femelle adulte, îles Falkland.

**Remark:** The collection site on the label, underside and in Schlegel 1863c differ. Only Schlegel 1863c identifies the specimen as adult. Erroneously at the label is mentioned Catalogue number 11 (=4). Temminck and Schlegel handwriting at the base of the pedestal.

**Dolphin Gull** *Leucophaeus scoresbii* Traill, 1823 [RMNH.AVES.206067]. Loc: East Falkland (ca. 51° 41' 40" S, 57° 51' 10" W). Date: in either 1858 or 1859. Col: C.C. Abbott. Age/sex: adult plumage. Acq: via John Gould and Gustav Adolph Frank Sr. Status: extant, accessed 18 December 2012. Tax: mounted. Publ: Abbott 1860, 1861; Gould 1859; Schlegel 1863c; Sclater 1860, 1861, 1862.

**Pedestal label:** [one hand] cat: n° 1. / *Larus scoresbii* / Traill. / Capt. Abbot / 1860 / Falkland eil.

**Pedestal underside:** [two hands] *scoresbii* Traill. / *Larus haematorhynchus* / Cat N°1 / feet a beak coral red / pupil white / Capt Abbot / 1860 / Oost-Falkland.

**Schlegel 1863c** (Tome VI, 23: 33–34): *Larus scoresbyi*, Cat 1, Adulte, îles Falkland, voyage du Capitaine Abbot, 1860: bec et pieds rouge de corail, iris de l'oeil blanc (Abbot).

**Remark:** The collection site on the label, underside and in Schlegel 1863c differ. The name Abbott was transcribed incorrectly at label, underside and in Schlegel. Only Schlegel 1863c identifies the specimen as adult. The bird was acquired through the Amsterdam-based dealer Gustav Adolph Frank and arrived on 30 April 1860 (see Kelp Goose RMNH.AVES.230433 as for C.C. Abbott).

**Dolphin Gull** *Leucophaeus scoresbii* Traill, 1823 [RMNH.AVES.206069]. Loc: East Falkland (ca. 51° 41' 40" S, 57° 51' 10" W). Date: in either 1858 or 1859. Col: C.C. Abbott. Age/sex: Immature ♂. Acq: via John Gould and Gustav Adolph Frank Sr. Status: extant, accessed 18 December 2012. Tax: mounted. Publ: Abbott 1860, 1861; Gould 1859; Schlegel 1863c; Sclater 1860, 1861, 1862.

**Pedestal label:** [one hand] cat. n° 2 / *Larus scoresbii* / Traill / ♂ / Capt Abbot / Frank 1861 / Falkland eil.

**Pedestal underside:** [two hands] *scoresbii* Traill. / *Larus haematorhynchus* (unreadable) / ♂ / Jeugdige klee in / overgang naar het vol- / wassen klee / Cat. N°2. / Reis van / Capt. Abbot / Frank 1861 / O. Falkland.

**Schlegel 1863c** (Tome VI, 23: 33–34): *Larus scoresbyi*, Cat 2, ♂ en passage, meme origine que le No 1.

**Remark:** The collection site on the label, underside and in Schlegel 1863c differ. The name Abbott was transcribed incorrectly at label, underside and in Schlegel. The bird was acquired through the Amsterdam-based dealer Gustav Adolph Frank and arrived on 12 May 1861 (see Kelp Goose RMNH.AVES.230433 as for C.C. Abbott).

**Kelp Gull** *Larus dominicanus dominicanus* M.H.C. Lichtenstein, 1823 [RMNH.AVES.207350]. Loc: East Falkland (ca. 51° 41' 40" S, 57° 51' 10" W). Date: in either 1858 or 1859. Col: C.C. Abbott. Age/sex: adult ♂ summer-plumage. Acq: via John Gould and Gustav Adolph Frank Sr. Status: extant, accessed 18 December 2012. Tax: mounted. Publ: Abbott 1860, 1861; Gould 1859; Schlegel 1863c; Sclater 1860, 1861, 1862.

**Pedestal label:** [one hand] cat: n° 1. / *Larus fuscus* / *dominicanus* Licht. / ♂ / Capt: Abbot / 1860 / Oost Falkland eil.

**Pedestal underside:** [one hand] *Larus dominicanus* / Cat N° 1 ♂ / Lect livid, Beak greenish yellow / Capt Abbot Stanley / 1859 / Oost Falkland.

**Schlegel 1863c** (Tome VI, 23: 12–13): *Larus dominicanus*, Cat 1, ♂ adultes, îles Falkland, voyage du Capitaine Abbot Stanley, acquis en 1860: pieds d'un verdâtre, passant par-ci par-la au jaune.

**Remark:** The collection site on the label, underside and in Schlegel 1863c differ. The name Abbott was transcribed incorrectly at label, underside and in Schlegel. The label, underside, and Schlegel 1863c all identify the specimen as male, but only the latter identifies it as an adult. Disagreement at the label and stand on the date of acquisition. The bird was acquired through the Amsterdam-based dealer Gustav Adolph Frank and arrived on 30 April 1860 (see Kelp Goose RMNH.AVES.230433 as for C.C. Abbott). Only Schlegel's handwriting appears under the base of the pedestal.

**Kelp Gull** *Larus dominicanus dominicanus* M.H.C. Lichtenstein, 1823 [RMNH.AVES.207352]. Loc: East Falkland (ca. 51° 41' 40" S, 57° 51' 10" W). Date: in either 1858 or 1859. Col: C.C. Abbott. Age/sex: adult ♀. Acq: via John Gould and Gustav Adolph Frank Sr. Status: extant, accessed 18 December 2012. Tax: mounted. Pub: Abbott 1860, 1861; Gould 1859; Schlegel 1863c; Sclater 1860, 1861, 1862.

**Pedestal label:** [one hand] Cat n° 2 / *Larus fuscus* / *dominicanus* Licht. / ♀ / Capt Abbot / 1860 / Oost Falkland eil.

**Pedestal underside:** [one hand] *Larus dominicanus* / ♀ / Cat N° 2. / 1860 / Capt Abbot / 1860 / Oost Falkland.

**Schlegel 1863c** (Tome VI, 23: 12–13): *Larus dominicanus*, Cat 2, Femelle adultes, îles Falkland, voyage du Capitaine Abbot Stanley, acquis en 1860: pieds d'un verdâtre, passant par-ci par-la au jaune.

**Remark:** The collection site on the label, underside and in Schlegel 1863c differ. The name Abbott was transcribed incorrectly at label, underside and in Schlegel. The label, underside, and Schlegel 1863c all identify the specimen as male, but only the latter identifies it as an adult. The bird was acquired through the Amsterdam-based dealer Gustav Adolph Frank and arrived on 30 April 1860 (see Kelp Goose RMNH.AVES.230433 as for C.C. Abbott). Only Schlegel's handwriting appears under the base of the pedestal.

**South American Tern** *Sterna hirundinacea* Lesson, 1831 [RMNH.AVES.209487]. Loc: Falkland (ca. 51° 41' 0" S, 59° 10' 0" W). Date: –. Col: –. Age/sex: Summer plumage. Acq: –. Status: extant, accessed 18 December 2012. Tax: mounted. Pub: Schlegel 1863c.



**Pedestal label:** [one hand] Cat n° 1. / *Sterna hirundinacea* / Lesson / Falkland eilanden.

**Pedestal underside:** [two hands] *Sterna meridionalis* / *Sterna* / Peale / Cat n° 1 / Malouines / Malouines.

**Schlegel 1863c** (Tome VI, 24: 15): *Sterna meridionalis*, Cat 1, Individu au plumage de noces, îles Malouines.

**Remark:** The collection site on the label, underside and in Schlegel 1863c differ. Two name sources are mentioned, Lesson on the label and Peale on the underside.

#### CATHARTIDAE

**Turkey Vulture** *Cathartes aura jota* (Molina, 1782) [RMNH.AVES.191314]. Loc: East Falkland (ca. 51° 41' 40" S, 57° 51' 10" W). Date: in either 1860 or 1861. Col: C.C. Abbott. Age/sex: adult ♀. Acq: via John Gould and Gustav Adolph Frank Sr. Status: extant, accessed 18 December 2012. Tax: mounted. Pub: Abbott 1860, 1861; Gould 1859; Schlegel 1862c; Sclater 1860, 1861, 1862.

**Pedestal label:** [one hand] Cat: n°1 / *Rhinogryphus aura* / ♀ *falklandicus* / (Sharpe) / Abbot colle.1861 / Falkland-eilanden.

**Pedestal underside:** [one hand] 19 *Cathartes aura* / Length from tail (unreadable) / tip of tail: 2 feet 3 inches / Breadth from tip to tip of wing, 5'2 / head & legs: pinkish flesh color / eye: dark brown / (Capt. Abbot) / Cat N°1 / reis van / Capt Abbot / Frank 1861 / Oost Falkland.

**Schlegel 1862c** (Tome VI, 10: 3–4): *Cathartes aura*, Cat 1, Femelle adulte, île orientale des Malouines, voyage du Capitaine Abbot, 1861.

**Remark:** The collection site on the label, underside and in Schlegel 1862c differ. The name Abbott was transcribed incorrectly at label, underside and in Schlegel. Only Schlegel 1862c identify the specimen as adult. The bird was acquired through the Amsterdam-based dealer Gustav Adolph Frank and arrived on 30 April 1860 (see Kelp Goose RMNH.AVES.230433 as for C.C. Abbott). Only Schlegel's handwriting appears under the base of the pedestal.

#### ACCIPITRIDAE

**Cinereous Harrier** *Circus cinereus* Vieillot, 1816 [RMNH.AVES.191467]. Loc: Falklands (ca. 51° 41' 0" S, 59° 10' 0" W). Date: in either 1858 or 1859. Col: C.C. Abbott. Age/sex: adult ♂. Acq: via Gustav Adolph Frank Sr. Status: extant, accessed 18 December 2012. Tax: mounted. Pub: Abbott 1860, 1861; Gould 1859; Schlegel 1862d; Sclater 1860, 1861, 1862.

**Pedestal label:** [one hand] *Circus cinereus* / m. Cat N°1 / par le Capitaine / Abbot 1860 / Malouines.

**Pedestal underside:** [one hand] 21 *Circus cinereus* / ♂ / Catal. N°1 / eye golden yellow / feet bright yellow / beak green, tip black / reis van / Capit. Abbot / (Frank 1860) / falkland-eil.

**Schlegel 1862d** (Tome II, 13: 5–6): *Circus cinereus*, Cat 1, ♂ au plumage parfait, île orientale des malouines, recueilli par le Capitaine Abbot, abtenu en 1860.

**Remark:** The collection site on the label, underside and in Schlegel 1862d differ. The name Abbott was transcribed in-

correctly at label, underside and in Schlegel. Only Schlegel 1862d identifies the specimen as adult ♂. The bird was acquired through the Amsterdam-based dealer Gustav Adolph Frank and arrived on 30 April 1860 (see Kelp Goose RMNH.AVES.230433 as for C.C. Abbott). Only Schlegel's handwriting appears under the base of the pedestal.

**Cinereous Harrier** *Circus cinereus* Vieillot, 1816 [RMNH.AVES.191468]. Loc: East Falkland (ca. 51° 41' 40" S, 57° 51' 10" W). Date: in either 1858 or 1859. Col: C.C. Abbott. Age/sex: adult ♀. Acq: via John Gould and Gustav Adolph Frank Sr. Status: extant, accessed 18 December 2012. Tax: mounted. Pub: Abbott 1860, 1861; Gould 1859; Schlegel 1862d; Sclater 1860, 1861, 1862.

**Pedestal label:** [one hand] *Circus cinereus* / f. Cat N°2 / pr Mr. Abbot / 1860 / Malouines.

**Pedestal underside:** [one hand] 11 *Circus cinereus* / N° 2 / ♀ in kleur = ♂ (Abbot) / reis van / Abbot / Frank 1860 / Oost Falkland.

**Schlegel 1862d** (Tome II, 13: 5–6): *Circus cinereus*, Cat 2, Femelle au plumage parfait, même origine; (la femelle adulte parfaitement semblable par ses teintes au vieux male: note du Capitaine Abbot).

**Remark:** The collection site on the label, underside and in Schlegel 1862d differ. The name Abbott was transcribed incorrectly at label, underside and in Schlegel. Both the underside and Schlegel 1862d identify the specimen as female, but only the latter identifies it as an adult. The bird was acquired through the Amsterdam-based dealer Gustav Adolph Frank (see Kelp Goose RMNH.AVES.230433 as for C.C. Abbott). Only Schlegel's handwriting appears under the base of the pedestal.

**Cinereous Harrier** *Circus cinereus* Vieillot, 1816 [RMNH.AVES.191469]. Loc: Falkland (ca. 51° 41' 0" S, 59° 10' 0" W). Date: February – March 1820. Col: *L'Uranie* Joseph Paul Gaimard / Jean René Constant Quoy. Age/sex: adult ♂. Acq: via exchanged with Paris Museum. Status: extant, accessed 18 December 2012. Tax: mounted. Pub: Freycinet et al. 1824; Schlegel 1862d.

**Pedestal label:** [one hand] *Circus cinereus* / m. Cat N°3 / voy. Quoy & Gaimard, / du Musée de Paris / Malouines.

**Pedestal underside:** [one hand] 3 / *Circus cinereus* / *Falco his-trionius* ♂ / 7 / Malouines.

**Schlegel 1862d** (Tome II, 13: 5–6): *Circus cinereus*, Cat 3, ♂ adulte Malouines, voyage de Quoy et Gaimard, du Musée de Paris.

**Remark:** The underside, and Schlegel 1862d all identify the specimen as male, but only the latter identifies it as an adult. Only one name source is mentioned, Quoy & Gaimard on the label and Schlegel 1862d. Only Schlegel's handwriting appears under the base of the pedestal.

**Cinereous Harrier** *Circus cinereus* Vieillot, 1816 [RMNH.AVES.191473]. Loc: Falkland (ca. 51° 41' 0" S, 59° 10' 0" W). Date: March 1833 or March 1834. Col: C. Darwin. Age/sex: young ♂. Acq: via Gustav Adolph

Frank Sr. Status: extant, accessed 11 February 2013. Tax: mounted. Publ: Gould 1839; Schlegel 1862d; van Grouw & Steinheimer 2008.

**Pedestal label:** [one hand] *Circus cinereus* / m. Cat N°7. / voy: Darwin. / 4 Janvier 1837 / Malouines.

**Pedestal underside:** [one hand] N°7 / *Circus cinereus* / 20 / Jong ♂ / reis / van / Darwin / frank 1860 / 4 January 1837 / Oost. Falkland-eiland.

**Schlegel 1862d** (Tome II, 13: 5–6): *Circus cinereus*, Cat 7, ♂ au premier plumage, tue le 4 Janvier 1837, ile orientale des Malouines, voyage C. Darwin.

**Remark:** The collection site on the label, underside and in Schlegel 1862d differ. The underside and Schlegel 1862d identify the specimen as young male but lacks at the label. Only Schlegel's handwriting appears under the base of the pedestal.

This bird is discussed by van Grouw & Steinheimer (2008), as the missing bird from 4 January 1837, however, all notes have been subsequently added and no original data is available on or from the specimen. Possibly at one stage the original label was present. Darwin donated at 4 January 1837 mammals and 450 birds of HMS *Beagle* expedition to the Zoological Society of London (e.g. to John Gould to described them), 34–39 specimens that are still in existence from the Society arrived in 1839, 1841 and 1856 at the British Museum. The Society's labels recorded donor's name, the acquisition date and Darwin's specimen's numbers (e.g. C. Darwin Esq, Jan 4 1837) (Steinheimer 2004).

Another notable remark we find on the underside as the specimen was reportedly purchased from Frank in 1860. The other 5 from 7 birds from HMS *Beagle* expedition in Naturalis arrived in 1863 (Steinheimer 2004, van Grouw & Steinheimer 2008). The largest numbers of birds from The Falklands were those that arrived in 1859–1863 collected by C.C. Abbott (see this paper). At 30 April 1860, a large load arrived from Abbott via Frank at Naturalis, and amongst the specimens were 3 *Circus*.

**Cinereous Harrier** *Circus cinereus* Vieillot, 1816 [RMNH.AVES.191476]. Loc: East Falkland (ca. 51° 41' 40" S, 57° 51' 10" W). Date: in either 1858 or 1859. Col: C.C. Abbott. Age/sex: young ♂. Acq: via John Gould and Gustav Adolph Frank Sr. Status: extant, accessed 18 December 2012. Tax: mounted. Pub: Abbott 1860, 1861; Gould 1859; Schlegel 1862d; Sclater 1860, 1861, 1862.

**Pedestal label:** [one hand] *Circus cinereus* / Cat N°8 / pr. Mr. le Capitaine / Abbot / 1860 / Malouines.

**Pedestal underside:** [one hand] 22 *Circus cinereus* / No.8 / ♂ jeugdige klee / Abbot / Frank 1860 / Oost Falkland.

**Schlegel 1862d** (13: 5–6): *Circus cinereus*, Cat 7, Male, Malouines, recueilli par le Capitaine Abbot, obtenu en 1860.

**Remark:** The collection site on the label, underside and in Schlegel 1862d differ. The name Abbott was transcribed incorrectly at label, underside and in Schlegel. Both the underside and Schlegel 1862d identify the specimen as male, but only the former identifies it as young. The bird was acquired through the Amsterdam-based dealer Gustav Adolph Frank and arrived on 30 April 1860 (see Kelp Goose RMNH.AVES.230433 as for C.C. Abbott). Only Schlegel's handwriting appears under the base of the pedestal.

**Variable Hawk** *Geranoaetus polyosoma polyosoma* (Quoy & Gaimard, 1824) [RMNH.AVES.191227]. Loc: Falklands (ca. 51° 41' 0" S, 59° 10' 0" W). Date: in either 1858 or 1859. Col: C.C. Abbott. Age/sex: adult ♂. Acq: via John Gould and Gustav Adolph Frank Sr. Status: extant, accessed 18 December 2012. Tax: mounted. Pub: Abbott 1860, 1861; Gould 1859; Schlegel 1862d; Sclater 1860, 1861, 1862.

**Pedestal label:** [one hand] *Buteo polyosoma* / m. Cat N°1 / voy. Cap. Abbot / Falkland.

**Pedestal underside:** [two hands] 30 *polyosoma* / ♂ *erythronotus* / eye Yellow, feet yellow / Cat N°1 / reis van / Capt Abbot / Frank 1860 / Falklands.

**Schlegel 1862a** (Tome II, 6: 12–13): *Buteo polyosoma*, Cat 1, ♂ au plumage parfait, mais le gris du dos montrant encore des traces tres sensibles de la teinte rousse de l'habit de passage; ile orientale de Falkland, voyage du Capitaine Abbot, obtenu en 1860: iris de l'oeil et pieds jaunes (Abbot).

**Remark:** One generic and two specific names are cited, with the primary binomial on the label agreeing with Schlegel 1862d. The name Abbott was transcribed incorrectly at label, underside and in Schlegel. The underside, and Schlegel 1862d identify the specimen as male, but only the latter identifies it as an adult. For information on the Amsterdam-based dealer Gustav Adolph Frank and C.C. Abbott see: Kelp Goose RMNH.AVES.230433.

**Variable Hawk** *Geranoaetus polyosoma polyosoma* (Quoy & Gaimard, 1824) [RMNH.AVES.191228]. Loc: Falklands (ca. 51° 41' 0" S, 59° 10' 0" W). Date: –. Col: –. Age/sex: ♀. Acq: via Gustav Adolph Frank Sr. Status: extant, accessed 18 December 2012. Tax: mounted. Pub: Schlegel 1862d.

**Pedestal label:** [one hand] *Buteo polyosoma* / f. Cat N°2 / pr Mr. Frank / Falkland.

**Pedestal underside:** [two hands] 46. *polyosoma* / *B. erythronotus* / *Falco tricolor* ♀ d'Orbigny / voy.pl3.fig2 / Cat N°2 / pr Mr Frank / Malouines et Chili.

**Schlegel 1862a** (Tome II, 6: 12–13): *Buteo polyosoma*, Cat 2, Femelle, habit de passage, a manteaux et scapulaires d'un roux rouygeatre uniforme; iles Falkland, pa Mr. Frank.

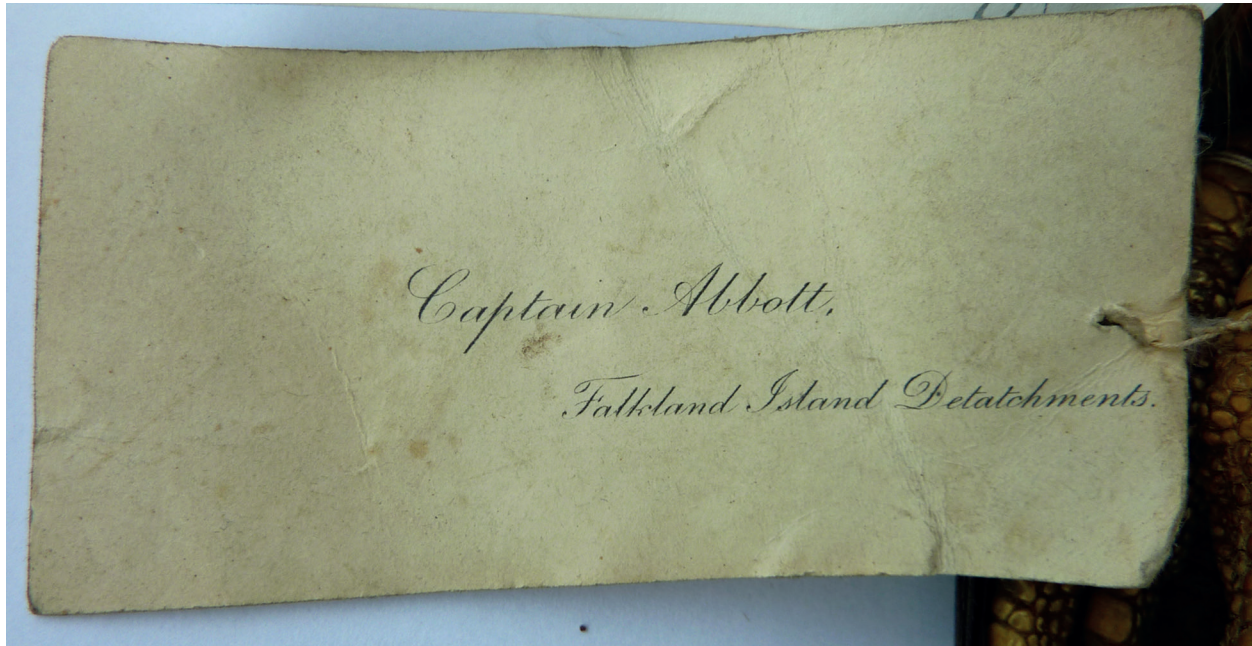
**Remark:** The collection site on the underside differs from that in Schlegel 1862d. Only one name source is mentioned, d'Orbigny on the underside. Three generic and three specific names are cited, with the primary binomial on the label agreeing with Schlegel 1866. For information on the Amsterdam-based dealer Gustav Adolph Frank see: Kelp Goose RMNH.AVES.230433.

**Variable Hawk** *Geranoaetus polyosoma polyosoma* (Quoy & Gaimard, 1824) [RMNH.AVES.191229]. Loc: Falkland (ca. 51° 41' 0" S, 59° 10' 0" W). Date: –. Col: –. Age/sex: ♂. Acq: via Gustav Adolph Frank Sr. Status: extant, accessed 18 December 2012. Tax: mounted. Pub: Schlegel 1862d.

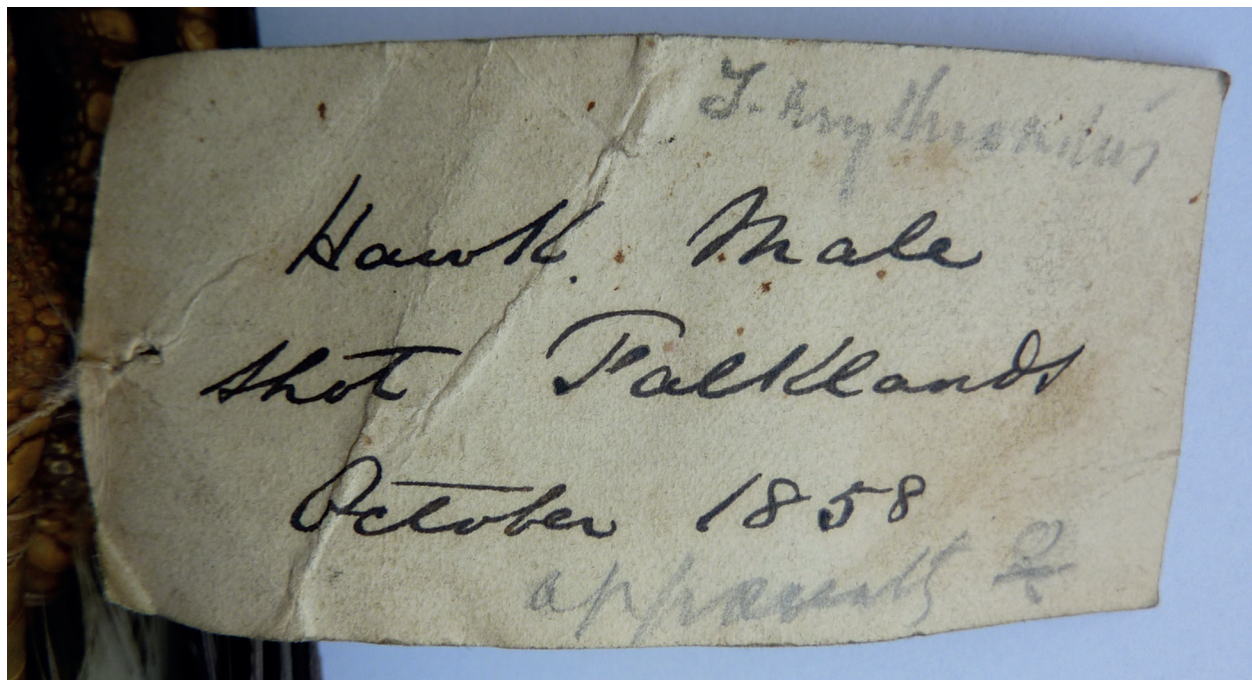
**Pedestal label:** [one hand] *Buteo polyosoma* / m. Cat N°3 / pr. Mr. Frank / Falkland.

**Pedestal underside:** [two hands] 34. *polyosoma* / *B. erythronotus* ♀ / ♂ / Quoy / Cat N°3 / Frank / Falkland.





**Fig. 3.** Charles Compton Abbott label, front (Variable Hawk *Geranoaetus polyosoma*, NHMUK 1955.6-20.2413; photograph by Justin Jansen, 18 June 2015; © Natural History Museum, Tring, UK).



**Fig. 4.** Charles Compton Abbott label, back (Variable Hawk *Geranoaetus polyosoma*, NHMUK 1955.6-20.2413; photograph by Justin Jansen, 18 June 2015; © Natural History Museum, Tring, UK)

**Schlegel 1862a** (Tome II, 6: 12–13): *Buteo polyosoma*, Cat 3, male, habit de passage moins avance que celui du NO 2; roux rougeatre uniforme; iles Falkland, par Mr Frank.

**Remark:** Sexing is absent at the label, underside identifies ♂ as female, and Schlegel 1862d identifies the bird as ♂. For information on the Amsterdam-based dealer Gustav Adolph Frank see: Kelp Goose RMNH.AVES.230433.



**Variable Hawk** *Geranoaetus polyosoma polyosoma* (Quoy & Gaimard, 1824) [RMNH.AVES.191231]. Loc: Falkland (ca. 51° 41' 0" S, 59° 10' 0" W). Date: –. Col: –. Age/sex: adult ♂. Acq: via Gustav Adolph Frank Sr. Status: extant, accessed 18 December 2012. Tax: mounted. Pub: Schlegel 1862d.

**Pedestal label:** [one hand] *Buteo polyosoma* / m. Cat N°5 / pr. Mr. Frank / Falkland.

**Pedestal underside:** [two hands] 38 / *polyosoma* / *Buteo erythronotus* / King / jeune / Cat N°5 / pr. Frank / Malouines.

**Schlegel 1862a** (Tome II, 6: 12–13): *Buteo polyosoma*, Cat 5, ♂ au premier plumage, îles Falkland, par Mr. Frank.

**Remark:** The collection site on the label, underside and in Schlegel 1862d differ. Both the underside and label identify do not sex the bird, but Schlegel 1862d identifies it as an adult ♂. Only one name source is mentioned, King on the underside. For information on the Amsterdam-based dealer Gustav Adolph Frank see: Kelp Goose RMNH.AVES.230433.

**Variable Hawk** *Geranoaetus polyosoma polyosoma* (Quoy & Gaimard, 1824) [RMNH.AVES.191232]. Loc: East Falkland (ca. 51° 41' 40" S, 57° 51' 10" W). Date: in either 1860 or 1861. Col: C.C. Abbott. Age/sex: adult ♂. Acq: via John Gould and Gustav Adolph Frank Sr. Status: extant, accessed 18 December 2012. Tax: mounted. Pub: Abbott 1860, 1861; Gould 1859; Schlegel 1862d; Sclater 1860, 1861, 1862.

**Pedestal label:** [one hand] *Buteo polyosoma* / m. Cat N°6 / voy. Cap. Abbot / Falkland.

**Pedestal underside:** [two hands] 40 *polyosomoma* / ♂ / Cat N°6 / Reis van / cap. Abbot / Frank 1862 / Oost-Falkland.

**Schlegel 1862a** (Tome II, 6: 12–13): *Buteo polyosoma*, Cat 6, ♂ au premier plumage, îles Falkland, voyage du Capitaine Abbot.

**Remark:** The collection site on the label, underside and in Schlegel 1862d differ. The name Abbott was transcribed incorrectly at label, underside and in Schlegel. Both the underside and Schlegel 1862d identify the specimen as male, but only the latter identifies it as an adult. For information on the Amsterdam-based dealer Gustav Adolph Frank see: Kelp Goose RMNH.AVES.230433. Note the difference in latin names on label and underside.

## FALCONIDAE

**Striated Caracara** *Phalcoboenus australis* J.F. Gmelin, 1788 [RMNH.AVES.193332]. Loc: East Falkland (ca. 51° 41' 40" S, 57° 51' 10" W). Date: in either 1858 or 1859. Col: C.C. Abbott. Age/sex: adult ♂. Acq: via John Gould and Gustav Adolph Frank Sr. Status: extant, accessed 18 December 2012. Tax: mounted. Pub: Abbott 1860, 1861; Gould 1859; Schlegel 1862b; Sclater 1860, 1861, 1862.

**Pedestal Label:** [one hand] *Polyborus australis*. / Cat N°1. / voy. Cap Abbot. Falkland.

**Pedestal underside:** [one hand] 43 / *Polyboris australis* / ♂ / Feet & bare parts of the head / bright yellow / Cat N°1 / reis van / Capt. Abbot / (Frank 1860) / Oost Falkland.

**Schlegel 1862b** (Tome II, 9: 3–4): *Polyborus australis*, Cat 1, ♂ au plumage parfait, île orientale de Falkland, voyage du capitaine Abbot, obtenu en 1860.

**Remark:** The collection site on the label, underside and in Schlegel 1862b differ. The name Abbott was transcribed incorrectly at label, underside and in Schlegel. Both label as underside lack ageing, in Schlegel 1862b the bird is aged. The bird was acquired through the Amsterdam-based dealer Gustav Adolph Frank and arrived on 30 April 1860 (see Kelp Goose RMNH.AVES.230433 as for C.C. Abbott). Only Schlegel's handwriting appears under the base of the pedestal.

**Striated Caracara** *Phalcoboenus australis* J.F. Gmelin, 1788 [RMNH.AVES.193333]. Loc: Falklands (ca. 51° 41' 0" S, 59° 10' 0" W). Col: voyage *La Coquille*, R.P. Lesson / P. Garnot. Date: November–December 1822. Age/sex: adult. Acq: received in exchange with the Paris Museum. Status: extant, accessed 11 February 2013. Tax: mounted. Pub: Lesson & Garnot 1826–1830; Schlegel 1862d.

**Pedestal label:** [one hand] *Polyboris australis*. / Cat N°2. / voy. de Coquille. Falkland.

**Pedestal underside:** [two hands] *Polyborus australis* / *Falco novae Zelandiae* / Lath / 37. / Coquille Pl. / Cat. N° 2 / *Caracara funèbre*. / Temm.Pl.Col.192. / Ost-Falkland / ~~van Diemen~~ / Patagonia.

**Schlegel 1862b** (Tome II, 9: 3–4): *Polyborus australis*, Cat 2, Individue au plumage parfait, îles Falkland, voyage de *la Coquille*.

**Remark:** The collection site on the label, underside and in Schlegel 1862b differ. Both label as underside lack ageing, in Schlegel 1862b the bird is aged.

**Striated Caracara** *Phalcoboenus australis* J.F. Gmelin, 1788 [RMNH.AVES.193334]. Loc: Falkland (ca. 51° 41' 0" S, 59° 10' 0" W). Date: –. Col: –. Age/sex: adult. Acq: via Gustav Adolph Frank Sr. Status: extant, accessed 11 February 2013. Tax: mounted. Publ: Schlegel 1862d.

**Pedestal Label:** [one hand] *Polyborus australis*. / Cat N°3. / pr. Mr. Frank. Falkland.

**Pedestal underside:** [one hand] 29 / *Polyborus australis* / *Falco novae Zeelandiae* Lath / *Caracara funèbre* Tem / Pl.Col.192 / Cat N°3 / pr. Frank, ~~Malouines~~ / Falkland.

**Schlegel 1862b** (Tome II, 9: 3–4): *Polyborus australis*, Cat 3, Individue au premier plumage, îles Falkland, par Mr. Frank.

**Remark:** The collection site on the label, underside and in Schlegel 1862b differ. Both label as underside lack ageing, in Schlegel 1862b the bird is aged. For information on the Amsterdam-based dealer Gustav Adolph Frank see: Kelp Goose RMNH.AVES.230433. Two specimens are missing from HMS *Beagle* (Steinheimer 2004). Only Schlegel's handwriting appears under the base of the pedestal.

## FURNARIIDAE

**Blackish Cinclodes** *Cinclodes antarcticus* Garnot, 1826 [RMNH.AVES.168495]. Loc: East Falkland (ca.

51° 41' 40" S, 57° 51' 10" W). Date: in either 1858 or 1859. Col: C.C. Abbott. Age/sex: —. Acq: via John Gould and Gustav Adolph Frank Sr. Status: extant, accessed 18 December 2012. Tax: mounted. Pub: Abbott 1860, 1861; Gould 1859; Sclater 1860, 1861, 1862.

**Pedestal label:** [one hand] *Cinclodes antarcticus* (Garn.) / Voy. Capt. Abbot Stanley. East Falkland / 1860.

**Pedestal underside:** [one hand] Capt. / Abbot Stanley / 1860 / Oost Falkland.

**Remark:** The name giving of the location of collecting is different in underside and label. Only Schlegel's handwriting under the base of the pedestal. The name Abbott was transcribed incorrectly at the underside and label. The bird was acquired through the Amsterdam-based dealer Gustav Adolph Frank and arrived on 30 April 1860 (see Kelp Goose RMNH.AVES.230433 above).

#### TROGLODYTIDAE

**Grass Wren** *Cistothorus platensis falklandicus* Chapman, 1934 [RMNH.AVES.168365]. Loc: East Falkland (ca. 51° 41' 40" S, 57° 51' 10" W). Date: in either 1858 or 1859. Col: C.C. Abbott. Age/sex: —. Acq: via John Gould and Gustav Adolph Frank Sr. Status: extant, accessed 18 December 2012. Tax: mounted. Pub: Abbott 1860, 1861; Gould 1859; Sclater 1860, 1861, 1862.

**Pedestal label:** [one hand] *Cistothorus platensis* (Lath.) / Frank, 1860 / East Falkland.

**Pedestal underside:** [one hand] Frank / 1860 / Oost-Falkland.

**Remark:** The collection site on the label and underside differ. The bird was acquired through the Amsterdam-based dealer Gustav Adolph Frank and arrived on 30 April 1860 (see Kelp Goose RMNH.AVES.230433 above). Only Schlegel's handwriting appears under the base of the pedestal.

#### TURDIDAE

**Austral Thrush** *Turdus falcklandii falcklandii* Quoy & Gaimard, 1824 [RMNH.AVES.170710]. Loc: Falkland (ca. 51° 41' 0" S, 59° 10' 0" W). Date: before 1850. Col: —. Age/sex: —. Acq: —. Status: extant, accessed 18 December 2012. Tax: mounted. Pub: —.

**Pedestal label 1:** [one hand] *Turdus falklandicus* Quoy & Gaimard / Avant 1850 / Falkland Isl.

**Pedestal label 2:** [two hands] *Turdus falklandicus* / Q et G. / Patria? / Falkland Isl.

**Pedestal underside:** [one hand] *Turdus falklandicus* / Quoy et Gaimard.

**Remark:** Handwriting is Temminck's and therefore an old specimen, most likely received in exchanges with the Parisian Museum. One specimen is missing from HMS *Beagle* (Steinheimer 2004).

#### ICTERIDAE

**Long-tailed Meadowlark** *Leistes loyca falklandica* (Leverkühn, 1889) [RMNH.AVES.168495]. Loc: East Falkland (ca. 51° 41' 40" S, 57° 51' 10" W). Date: in either 1858 or 1859. Col: C.C. Abbott. Age/sex: —. Acq: via John Gould and Gustav Adolph Frank Sr. Status: extant, accessed 18 December 2012. Tax: mounted. Pub: Abbott 1860, 1861; Gould 1859; Sclater 1860, 1861, 1862.

**Pedestal label:** [one hand] *Trupialis militaris* (L.) / Cat. / (Sclat. Ib. 1884: p. 23) / Acquis du Capt / Abbot Stanley 1860 / Falkland occ.

**Pedestal underside:** [two hands] *Trupialis militaris* (L.) / 3 / ♂ / Kapt. / Abbot Stanley / 1860 / Oost Falkland.

**Remark:** Only Schlegel's handwriting under the base of the pedestal. The name Abbott was transcribed incorrectly at label and in underside. The collection site on the label and underside differ. Sexing lacks at the label. The name Abbott was transcribed incorrectly at the underside and label. The bird was acquired through the Amsterdam-based dealer Gustav Adolph Frank and arrived on 30 April 1860 (see Kelp Goose RMNH.AVES.230433).

#### EMBERIZIDAE

**White-bridled Finch** *Melanodera melanodera melanodera* (Quoy & Gaimard, 1824) [RMNH.AVES.165592]. Loc: East Falkland (ca. 51° 41' 40" S, 57° 51' 10" W). Date: in either 1858 or 1859. Col: C.C. Abbott. Age/sex: ♀. Acquisition: via John Gould and Gustav Adolph Frank Sr. in 1860. Status: extant, accessed 18 December 2012. Tax: mounted. Pub: Abbott 1860, 1861; Gould 1859; Sclater 1860, 1861, 1862.

**Pedestal label:** absent.

**Pedestal underside:** [one hand] ♀ / Capt / Abbot Stanley / 1860 / Oost Falkland.

**Remark:** The name Abbott was transcribed incorrectly at the underside. The bird was acquired through the Amsterdam-based dealer Gustav Adolph Frank and arrived on 30 April 1860 (see Kelp Goose RMNH.AVES.230433 above). Only Schlegel's handwriting appears under the base of the pedestal.

**White-bridled Finch** *Melanodera melanodera melanodera* (Quoy & Gaimard, 1824) [RMNH.AVES.165582]. Loc: Falkland (ca. 51° 41' 0" S, 59° 10' 0" W). Date: —. Col: —. Age/sex: ♂. Acq: —. Status: extant, accessed 18 December 2012. Tax: mounted. Pub: —.

**Pedestal label:** [one hand] *Chlorospiza* Gray / *Emberiza melanodera* / Beagle pl 32. Uranie alt pl. / ♂ / Malouines.

**Pedestal underside:** no text.

**Remark:** Handwriting is Temminck's and therefore an old specimen, most likely received in exchanges with the Parisian Museum.

## DISCUSSION

### Original labels

I found no original labels on Falkland specimens from the French expeditions (both in Naturalis as in MNHN). However, the information (albeit only for some) is recorded in a number of books and papers in the MNHN archives; most of this information is also found on the pedestal underside, with a summary of the information from the pedestal underside being transcribed on the labels (where the information was first recorded – in the books and papers or under the pedestals – is uncertain). The Falkland specimens in the MNHN were apparently treated in the same manner as were earlier specimens from the Baudin expedition (389 specimens examined) (Jansen 2018), which also arrived in France as skins. Usually only single specimens, representing the male, female, and young (if present and recognisable) of each species collected on the Baudin expedition were kept, with duplicates used for exchanges and donations (Jansen 2016, 2018). When mounted, the known information was transcribed on the pedestal underside by the museum's taxidermists, as it was for the 25 Falkland specimens examined in the MNHN. The information found on the pedestal underside does not have either the original collector, the date of collection, or the specific collecting locality within the Falklands.

For the Falkland birds collected by the British expeditions, I found a number of specimens with original labels. Of 69 birds examined collected by McCormick on the *Erebus* and *Terror* expedition, 38 had an original label (some of McCormick's birds however are attributed to the Admiralty). Of 3 birds examined from the *Rattlesnake* expedition, only one had an original label; one of those without an original label was collected by MacGillivray. Of 15 birds examined from HMS *Beagle* (collected by Covington/Darwin and Fitzroy and donated by Burnett), none had original labels. However, most of Abbott's Falkland birds in the NHMUK still have their original labels attached: of 16 examined, only one did not have an original label or annotations from Abbott.

### Original collector

We find on the labels attached to the Naturalis specimens the following data regarding sources, including collectors and expeditions: C.C. Abbott (46), Frank Merchants from Amsterdam (21), no data (11), *La Coquille* (5), *L'Astrolabe* (2), HMS *Beagle* (1), *L'Uranie* (1) and MNHN (1). Of these, 3 birds (two from *La Coquille* and one with no data) are not indisputably from the Falklands.

For 54 Naturalis birds (60%) – 46 birds collected by Abbott and 7 birds from the French expeditions and HMS *Beagle* – we can more or less determine the original collector and date of collection. Similar data for the

remaining 35 Naturalis birds (40%), however, is not possible to reconstruct. Based on information from Abbott (Gould 1859, Abbott 1860, 1861) and data found in the journals of the French expeditions and HMS *Beagle*, we know the approximate period when collecting occurred (odd is that the HMS *Beagle* bird is the sole bird with a full date collecting date on it, and one of the very few birds in Naturalis collected prior to 1850 with such a dataset). However, precise data, including exact location, date of collection, and specific collector, is beyond the scope of this paper.

For the birds purchased from the Frank Merchants in Amsterdam, we find 21 birds in Naturalis that have Frank recorded as their source. Obviously, they were not the collectors of these specimens, as no bird was collected at all by the Frank family in the Falklands (there is no documented Falkland Islands visit from these Amsterdam based merchants).

Did the Naturalis archives provide any additional help? We only find notes in the Naturalis archives referring to Falkland birds received from Frank to the Rijksmuseum van Natuurlijke Historie (forerunner of Naturalis) from 3 May 1854 (*Procellaria*), 16 June 1856 and 30 April 1860. These notes typically describe the acquired specimens only vaguely.

### Transcription errors and omissions

All birds in NHMUK from Abbott have recorded on their original labels the month and year when collected. Other details – in particular notations on bare parts – are also present on some of the Abbott labels in the NHMUK. However, older specimens (distinguished by having smaller labels attached, while specimens collected later have larger labels, with “Captain Abbott, Falkland Islands Detachments” printed on the reverse) note only the species, sex, and month of collecting (a portion of Abbott birds have the printed labels attached to them).

The 46 Abbott birds in Naturalis (51.6% of all (89) Falkland birds in Naturalis) once had original labels attached like those attached to the Abbott birds in the NHMUK. However, of these 46 Naturalis specimens, only 14 (29.8%) include some details on bare parts (all noted on the pedestal underside); the remainder (70.2%) lack such details. Of these 14 specimens, 8 have such notes transcribed in English, while in the remaining 6, the notes are translated into Dutch; the original contexts of the latter are therefore missing, and no notes in the original English can be traced. These notes are found only on the pedestal underside and not in any other of the available sources, such as Schlegel's publications, new tags, or pedestal labels. If we compare labels, pedestal undersides and Schlegel's various publications to each other, we find no consistency in either the way Abbott was addressed (e.g. either as “Mr.” or “Captain”, “Cat.”, “Cap.”, “Capt.” and variations) or how his name was



spelled (e.g. “Abbot”, “Abbott”, and “Abott”); moreover, “voyage” or “Voy.” (e.g. “voyage du Capitaine Abbot” and “Voy. Cap. Abbot”), “Stanley” (e.g. “Abbot Stanley”, “Cat. Abbot Stanley”, “Voy: Abbot Stanly” and “Voy. Abbot Stanley”), and “col” (e.g. “Abbot col”) were also recorded. Neither the month or year when each specimen was collected / arrived is recorded on any of the 46 Abbott birds in Naturalis, as they are on all of the NHMUK specimens.

## CONCLUSIONS

Coenraad Jacob Temminck and Hermann Schlegel, both collection managers of birds at the Rijksmuseum van Natuurlijke Historie (now Naturalis), discarded all the original labels at the time when original information and precise data was not appreciated or as valued as it is today (Steinheimer 2010); moreover, the data that was available was imprecise and treated poorly, with the information not being transcribed precisely and suffering alteration over time. However, as shown in results, the damage can be controlled for a large number of specimens by analysis of the available original material and interpretation of the information supplied by various sources.

Further research into diaries, letters and acquisition books and the actual specimens should be considered in the future to establish the correct labeling of the specimens (for example to sort out the possible mix-up from *L'Uranie* and *La Coquille* specimens). Also, the condition (looks fair to good in most specimens) of the mounts / skins can be examined as they could be subject to x-radiation (Jansen & Steinheimer 2017).

**Acknowledgments.** I'm grateful for Robert Prÿs-Jones for encouraging me to submit this paper and to Igor Fadeev for his help. Pepijn Kamminga and Steven van der Mije gave me access to the collections and helped me with the registration numbers that were missing from my files. Hein van Grouw (NHMUK) helped with missing register numbers of some of the specimens and for granting me access on several occasions over the years.

## REFERENCES

- Abbott CC (1861) Notes on the Birds of the Falkland Islands. *Ibis* (3): 149–167
- Abbott CC (1860) The Penguins of the Falkland Islands. *Ibis* (2): 336–338
- Darwin CR (1839) Narrative of the surveying voyages of His Majesty's Ships Adventure and Beagle between the years 1826 and 1836, describing their examination of the southern shores of South America, and the Beagle's circumnavigation of the globe. Journal and remarks 1832–1836. John Murray, London
- Darwin CR (1859) On the origin of species by means of natural selection, or the preservation of favoured races in the struggle for life. John Murray, London
- Darwin CR (1871) The Descent of Man, and Selection in Relation to Sex. John Murray, London
- de Freycinet LCD (ed.) 1824 Voyage autour du monde: entrepris par ordre du roi ... exécuté sur les corvettes de S. M. l'Uranie et la Physicienne, pendant les années 1817, 1818, 1819 et 1820. Chez Pillot, Paris
- de Freycinet LCD (ed.) (1837) Voyage autour du Monde... exécuté sur les corvettes de L. M. «l'Uranie» et «La Physicienne», pendant les années 1817, 1818, 1819 et 1820. Paris
- Gould J (1839) Part 3 (2): Birds. Pp. 17–32, pls. 11–20. In: Darwin C. (ed.) The zoology of the Voyage of H.M.S. Beagle, under the command of Capt. Fitzroy, R.N., during the years 1832 to 1836, part 6. London
- Gould J (1859) List of Birds from the Falklands, with Descriptions of the Eggs of some of the species, from specimens collected principally by Captain C. C. Abbott, of the Falkland Islands Detachment. Proceedings of the Zoological Society of London 27: 93–98
- van Grouw H, Steinheimer FD (2008) Charles Darwin's lost Cinereous Harrier found in the collection of the National Museum of Natural History Leiden. *Zoologische Mededelingen Leiden* 82 (48): 595–598
- del Hoyo J, Collar NJ (2014) HBW and Birdlife International Illustrated Checklist of the Birds of the World. Volume 1: Non-Passerines. Lynx Edicions, Barcelona
- del Hoyo J, Collar NJ (2016) HBW and Birdlife International Illustrated Checklist of the Birds of the World. Volume 2: Passerines. Lynx Edicions, Barcelona
- Jansen JJFJ (2016) Towards the resolution of long-standing issues regarding the birds collected during the Baudin expedition to Australia and Timor (1800–1804): the discrepancy in the number of birds collected and their subsequent handling. *Journal of the National Museum (Prague). Natural History Series* 185 (2): 7–19
- Jansen JJFJ (2018) The Ornithology of the Baudin expedition (1800–1804). Privately published, Grave
- Jansen JJFJ, van der Mije SD (2015) Review of the mounted skins and skulls of the extinct Falkland Islands wolf, *Dusicyon australis*, held in museum collections. *Archives of Natural History* 42 (1): 91–100
- Jansen JJFJ, Steinheimer FD (2017) Research into the authenticity of 'Iwi *Drepanis coccinea* (G. Forster, 1781) skins from Cook's 3rd voyage: what taxidermy can add to the discussion. *Bulletin of the British Ornithologists' Club* 137 (4): 246–260
- Lanjouw J, Stafleu FA (1954) Index herbariorum; a guide to the location and contents of the world's public herbaria; Pt. II, 1; Collectors A-D. International Bureau for Plant Taxonomy and Nomenclature of the International Association for Plant Taxonomy, Utrecht
- Lesson RP, Garnot P (1826–1830) Voyage autour du monde entrepris par ordre du gouvernement sur la corvette la Coquille pendant les années 1822, 1823, 1824 et 1825. Paris
- MacGillivray W (1852) Narrative of the voyage of H.M.S. Rattlesnake, commanded by the late Captain Owen Stanley during the years 1846–50, including discoveries and surveys in New Guinea, the Louisiade Archipelago, etc: to which is added Mr. E.B. Kennedy's expedition for the exploration of the Cape York Peninsula. London
- Mees GF (1953) The white-eyes of the Aroe Islands (Aves, Zosteropidae). *Zoologische Mededelingen* 32 (2): 25–30
- Mees GF, Fisher CT (1986) On the type specimens of birds from Lifu, described by E. L. Layard in 1878. *Bulletin of the British Ornithologists' Club* 106: 153–156

- Rasmussen PC, Prŷs-Jones RP (2003) History vs mystery: the reliability of museum specimen data. *Bulletin of the British Ornithologists' Club* 123: 66–94
- Schlegel H (1862a) *Muséum d'Histoire naturelle des Pays-Bas*. – Revue méthodique et critique des collections déposées dans cet établissement. Tome II. 6: Buteones – August 1862. E.J. Brill, Leiden
- Schlegel H (1862b) *Muséum d'Histoire naturelle des Pays-Bas*. – Revue méthodique et critique des collections déposées dans cet établissement. Tome II. 9: Polybori – November 1862. E.J. Brill, Leiden
- Schlegel H (1862c) *Muséum d'Histoire naturelle des Pays-Bas*. – Revue méthodique et critique des collections déposées dans cet établissement. Tome II. 10: Vultures – November 1862. E.J. Brill, Leiden
- Schlegel H (1862d) *Muséum d'Histoire naturelle des Pays-Bas*. – Revue méthodique et critique des collections déposées dans cet établissement. Tome II. 13: Circi – December 1862. E.J. Brill, Leiden
- Schlegel H (1863a) *Muséum d'Histoire naturelle des Pays-Bas*. – Revue méthodique et critique des collections déposées dans cet établissement. Tome VI. 21: Pelecani – July 1863. E.J. Brill, Leiden
- Schlegel H (1863b) *Muséum d'Histoire naturelle des Pays-Bas*. – Revue méthodique et critique des collections déposées dans cet établissement. Tome VI. 22: Procellariidae – July 1863. E.J. Brill, Leiden
- Schlegel H (1863c) *Muséum d'Histoire naturelle des Pays-Bas*. – Revue méthodique et critique des collections déposées dans cet établissement. Tome VI. 32: Lari – August 1863. E.J. Brill, Leiden
- Schlegel H (1863d) *Muséum d'Histoire naturelle des Pays-Bas*. – Revue méthodique et critique des collections déposées dans cet établissement. Tome VI. 24: Sernae – September 1863. E.J. Brill, Leiden
- Schlegel H (1864) *Muséum d'Histoire naturelle des Pays-Bas*. – Revue méthodique et critique des collections déposées dans cet établissement. Tome V. 27: Scolopaces – November 1864. E.J. Brill, Leiden
- Schlegel H (1865) *Muséum d'Histoire naturelle des Pays-Bas*. – Revue méthodique et critique des collections déposées dans cet établissement. Tome IV. 29: Cursores – March 1865. E.J. Brill, Leiden
- Schlegel H (1866) *Muséum d'Histoire naturelle des Pays-Bas*. – Revue méthodique et critique des collections déposées dans cet établissement. Tome VI. 31: Anseres – May 1866. E.J. Brill, Leiden
- Schlegel H (1867) *Muséum d'Histoire naturelle des Pays-Bas*. – Revue méthodique et critique des collections déposées dans cet établissement. Tome VI. 33: Utrinatores – April 1867. E.J. Brill, Leiden
- Sclater PL (1860) Catalogue of the Birds of the Falkland Islands. *Proceedings of the Zoological Society of London* 28: 382–391
- Sclater PL (1861) Additions and Corrections to the list of the Birds of Falkland Islands. *Proceedings of the Zoological Society of London* 29: 45–47
- Sclater PL (1862) Catalogue of a collection of American birds. N. Trubner and Co., London
- Sharpe RB (1906) The history of the collections contained in the natural history departments of the British Museum. *Birds*. Trustees of the British Museum, London

Steinheimer FD (2004) Charles Darwin's bird collection and ornithological knowledge during the voyage of H.M.S. *Beagle*, 1831–1836. *Journal of Ornithology* 145: 300–320

Steinheimer FD (2010) Data-basing historical specimens – a science of its own. *proceedings of the 5th International Meeting of European Bird Curators: Natural History Museum Vienna, August 29th–31st, 2007, Vienna, Austria*: 113–119

## APPENDIX I

**Birds as noted as collected on the Falklands on *L'Uranie* from the lists of specimens that arrived in the MNHN (archives Laboratory MNHN, October 1820, unknown amount arrived in 1821, Freycinet (also indicated as Quoy & Gaimard))**

'goose' *Chloephaga* 6, Chiloe Wigeon 3, "ducks" 3, 'grebe' 2+4, 'heron' 4, 'pigeon' 4, 'rail' 1, King Penguin 1, 'penguin' *Eudyptes* 1, 'penguin' 1, 'albatros' 3, 'petrel' 3, Magellanic Cormorant 6, Snowy Shearwater 1, South American Snipe 1, Kelp Gull 1, 'tern' 4, Turkey Vulture 4, Cinereous Harrier 2, Variable Hawk 2, Caracara 1, Blackish Cinclodes 4, Austral Thrush 7, Long-tailed Meadowlark 1–2, White-bridled Finch 1.

Obviously the 'pigeons' are a mistake, as they don't occur on the Falklands (therefore the number is corrected from 69 to 65).

**Still present in MNHN (verified through a quick check)**  
Upland Goose 2, Mallard 1, Crested Duck 1, Yellow-billed Teal 2, White-tufted Grebe 3, Common Diving-petrel *Pelecanoides urinatrix* 1, Rock Shag 3, South American Snipe 2, Brown Skua *Stercorarius antarcticus* 2, Black-crowned Night-heron 2, *Sterna ssp* 1, Turkey Vulture, Cinereous Harrier 2, Variable Hawk 1, Striated Caracara 4, Austral Thrush 1, White-bridled Finch 2.

## APPENDIX II

**Birds as noted as collected on the Falkland on *La Coquille* from the lists of specimens that arrived in the MNHN (archives Laboratory MNHN, April 1825, Garnot & Lesson)**

Variable Hawk 5, Austral Thrush 1, Cinclodes 2, Plover 3, Oystercatcher 2, Grebe 2, Petrel 1, Skua 2, Cormorant 1, Goose 1, Duck 4.

**Still present in MNHN (verified through a quick check)**  
Kelp Goose 2, Falkland Steamer Duck 1, Southern Silvery Grebe 1, Rock Shag 2, Snowy Shearwater 1, Magellanic Oystercatcher 1, Southern Lapwing 2, Striated Caracara 1, Austral Thrush 1.