

Bonner zoologische Beiträge	Band 55 (2006)	Heft 2	Seiten 163–178	Bonn, Juli 2007
-----------------------------	----------------	--------	----------------	-----------------

African Coleoptera Type Specimens collected by Thomas Wagner in the collection of the ZFMK

Karl-Heinz LAMPE, Dirk ROHWEDDER & Carola SCHMIDT
Zoologisches Forschungsmuseum Alexander Koenig, Bonn, Germany

Abstract. The type specimens of African Coleoptera from material collected by Thomas Wagner mainly using insecticidal canopy fogging technique and housed in the Zoologisches Forschungsmuseum Alexander Koenig (ZFMK), Bonn, are listed. There are 71 names recorded; of these 37 (52%) are represented by holotypes. Specific names are sorted by their respective family and both are listed alphabetically. Reference to the original description of each taxon is provided and sex and number of each type given as well as images of the name bearing primary types.

Keywords. Type specimens, canopy fogging, Coleoptera, Africa.

1. INTRODUCTION

Thomas Wagner's material at the Zoologisches Forschungsmuseum (ZFMK) house African Coleoptera mainly collected in Rwanda, Kenya and Uganda from 1993 until today by insecticidal tree fogging. Voucher specimens were computerized within phase II of the German BIOTA East Africa Project (subproject BIOTA E15: "Capacity building in biodiversity information systems for insects and plants in East Africa") which is financially supported by the German Ministry of Science and Education (BMBF) and runs until May 2007. Data capture was done with the specimen based database BIODAT. By adaptation to the ABCD schema (Access to Biological Collection Data) BIODAT became both a BIOCASE- (Biological Collection Access Service for Europe) and GBIF- (Global Biodiversity Information Infrastructure) provider. Therefore full information at the specimen level, and not only of type specimens, for selected ZFMK insect collections will be commonly available on the World Wide Web (<http://www.biodat.de>). In case of type specimens images of the type itself and of the original labels are provided. The present catalogue covers 370 type specimens of 71 species of which 37 are represented by holotypes.

In this publication the specific taxa of Coleoptera are grouped by families and arranged alphabetically. They are listed by species epitheta, author, year of publication, page number where species was described, original generic assignment in brackets followed by the catalogue number/s, number/s sex and kind of type specimen. All primary types are listed with the original label information, supplemented by date and place collected information. Normally 'named area' information is used. If available the exact 'gathering site' information is indicated by geographical

coordinates (Latitude/Longitude). Higher ranked geographic information such as region, country and continent is added in a hierarchy. To avoid hypertrophic text length most of the secondary types are listed without original label information. If the collection, however, harbours only secondary types of a given taxon the original label information is given for the first type specimen. Images of the primary types are provided.

The following abbreviations were used in the lists: HT – holotype, PT – paratype, AT – "allotype"

COLEOPTERA

ANTHRIBIDAE

cognatus Frieser, 1997: 12 (*Mecocerus*)

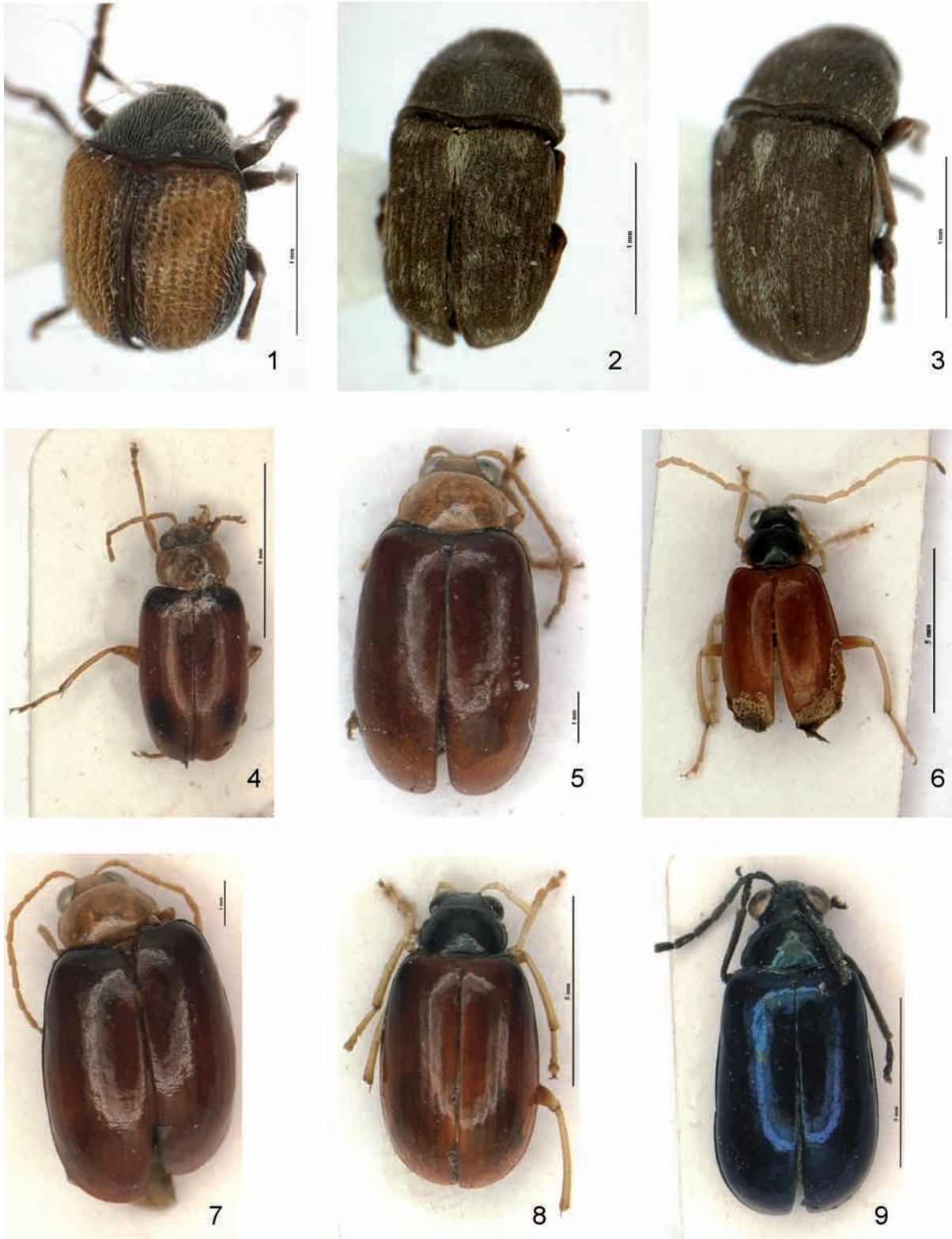
COL 2006/188 **1 ♀ PT**

Rwanda, Nyakabuye - Cyamudongo X.93 - Th. Wagner leg. / C.g.7 1 / Paratype / *Mecocerus cognatus* sp. n. - Paratypus ♀ - det. R. Frieser 1996
October 1993
Cyamudongo, Nyakabuye, Cyangugu, Rwanda, Africa
2°33'S, 28°59'E (gathering site: estimated value)

marginalis Frieser, 1997: 19 (*Triplodus*)

COL 2006/185 **♂ HT (Fig. 1)**

Rwanda, 1700 m - Cyamudongo, X.93 - Th. Wagner leg. / C.g.4 3 / Holotype / *Triplodus marginalis* sp. n. - Holotypus ♂ - det. R. Frieser 1996
October 1993
Cyamudongo, Nyakabuye, Cyangugu, Rwanda, Africa
2°33'S, 28°59'E (gathering site: estimated value)



Figs 1–9. *Triplopus marginalis* Frieser, 1997 (1) ♂ HT, *Uncifer nubilus* Frieser, 1997 (2) ♂ HT, *Uncifer proprius* Frieser, 1997 (3) ♂ HT, *Monolepta alwineae* Wagner, 2002 (4) ♂ HT, *Monolepta budongoensis* Wagner, 2002 (5) ♂ HT, *Monolepta comoen-sis* Wagner, 2000 (6) ♂ HT, *Monolepta congoensis* Wagner, 2002 (7) ♂ HT, *Monolepta constantini* Wagner, 2002 (8) ♂ HT, *Bo-noesioides jacobyi* Freund & Wagner, 2003 (9) ♂ HT: Habitus in dorsal view.

COL 2006/187 1 ♀ AT
October 1993
Cyamudongo, Nyakabuye, Cyangugu, Rwanda, Africa
2°33' S, 28°59' E (gathering site: estimated value)

COL 2006/186 1 ♂ PT
October 1993
Karengera, Cyangugu, Rwanda, Africa
2°31' S, 29°02' E (gathering site: estimated value)

muehlei Frieser, 1997: 15 (*Uncifer*)

COL 2006/175 1 ♂ PT
Uganda, District Masindi - Budongo Forest n. Sonso -
1°45' N, 31°35' W 11.-20.VII.95 - Th. Wagner leg. / T.n.15
1 / Paratype / *Uncifer muehlei* sp. n. - Paratypus ♂ - det. R.
Frieser 1996
11.-20. July 1995
Sonso River (Budongo Forest), Masindi, Uganda, Africa
1°45' N, 31°35' E (exact gathering site information; error
on original label!)

nubilus Frieser, 1997: 15-16 (*Uncifer*)

COL 2006/176 ♂ HT (Fig. 2)
Uganda, District Masindi - Budongo Forest n. Sonso -
1°45' N, 31°35' W 1.-10.VII.95 - Th. Wagner leg. / Holotype
/ *Uncifer nubilus* sp. n. - Holotypus ♂ - det. R. Frieser 1996
01.-10. July 1995
Sonso River (Budongo Forest), Masindi, Uganda, Africa
1°45' N, 31°35' E (exact gathering site information; error
on original label!)

COL 2006/177 1 ♀ AT
21.-30. July 1995

COL 2006/178 1 ♂ PT
11.-20. July 1995
Sonso River (Budongo Forest), Masindi, Uganda, Africa
1°45' N, 31°35' E (exact gathering site information; error
on original label!)

proprius Frieser, 1997: 16 (*Uncifer*)

COL 2006/179 ♂ HT (Fig. 3)
Uganda, District Masindi - Budongo Forest n. Sonso -
1°45' N, 31°35' W 21.-30.VII.95 - Th. Wagner leg. / T.n.11/2
/ Holotype / *Uncifer proprius* sp. n. - Holotypus ♂ - det. R.
Frieser 1996
21.-30. July 1995
Sonso River (Budongo Forest), Masindi, Uganda, Africa
1°45' N, 31°35' E (exact gathering site information; error
on original label!)

COL 2006/180 1 ♀ AT
COL 2006/181, 184 2 ♂ PT
11.-20. July 1995

COL 2006/183 1 ♂ PT

COL 2006/182 1 ♀ PT
21.-30. July 1995
Sonso River (Budongo Forest), Masindi, Uganda, Africa
1°45' N, 31°35' E (exact gathering site information; error
on original label!)

CERAMBYCIDAE

wagneri Adlbauer, 2006: 20-21 (*Stathmodera*)

Holotype ♂ - in: National Museums of Kenya (NMK), Nairobi

COL 2006/688 1 PT
Kenya, Kakamega F., - 0°22' N/34°50' E, 1800 m, - 7-11.II.99
Th. Wagner leg. / T.n.33 1 / PARATYPUS -
STATHMODERA - wagneri - ADLBAUER, 2006
7.-11. February 1999

Kakamega Forest, Western, Kenya, Africa
0°17' N, 34°53' E (exact gathering site information; imprecise
data on original label!)

COL 2006/689 1 PT
January 2002

COL 2006/696 1 PT
October 2002
Isiukhu River, Kakamega Forest, Western, Kenya, Africa
0°20' N, 34°53' E (exact gathering site information; imprecise
data on original label!)

COL 2006/690-691 2 PT
January-February 2002

COL 2006/692 - 695 4 PT
October 2002

COL 2006/701 1 PT
January 2003
Busumbuli River, Kakamega Forest, Western, Kenya, Africa
0°19' N, 34°52' E (exact gathering site information; imprecise
data on original label!)

COL 2006/697 - 698 2 PT
October 2002

COL 2006/702 1 PT
January 2003
Colobus Trail, Kakamega Forest, Western, Kenya, Africa
0°21' N, 34°51' E (exact gathering site information; imprecise
data on original label!)

COL 2006/699 1 PT
October 2002
Kisere Forest, Kakamega Forest, Western, Kenya, Africa
0°24' N, 34°54' E (site information)

COL 2006/700 1 PT
October 2002
Yala River, Kakamega Forest, Western, Kenya, Africa
0°12' N, 34°53' E (exact gathering site information; imprecise
data on original label!)

CHRYSOMELIDAE

alwineae Wagner, 2002: 35 (*Monolepta*)

COL 2007/156 ♂ HT (Fig. 4)
Ivory Coast, Comoe - NP, 8,75N / 3,80W - VI.-VII.1997,
C. Mody leg. / KC 35 .1C III.15 / Holotypus / *Monolepta* -
alwineae sp. nov. - Th. Wagner det. 02 / AfriGa - speci-
men ID - 1270 - specimen data - documented - 23.III.2006
June-July 1997
Komoe, Parc National de la, Zanzan, Cote d'Ivoire, Africa
8°45' N, 3°48' W (site information)

budongoensis Wagner, 2002: 29 (*Monolepta*)

COL 2007/157 ♂ HT (Fig. 5)
 Uganda, District Masindi - Budongo Forest n. Sonso -
 1°45'N, 31°35'E; - 21.-30.VII.95 - Th. Wagner leg. / R.a.22
 1 / Holotypus / *Monolepta* - *budongoensis* - Wag-ner / AfriGa
 - specimen ID - 1266 - specimen data - documented -
 23.III.2006
 21.-30. July 1995
 Sonso River (Budongo Forest), Masindi, Uganda, Africa
 1°45'N, 31°35'E (site information)

COL 2006/158-159 2 PT
 5.-12. February 1997
 Semliki Forest, Bundibugyo, Western, Uganda, Africa
 0°48'N, 30°08'E (site information)

clarae Wagner, 2000a: 36 (*Monolepta*)

COL 2007/160 1 ♂ PT
 Congo Belge, P.N.G. - Miss. H. De Saeger - Ndelele/2, 6-
 VI-1952 - H. De Saeger. 3589 / Paratypus / *Monolepta clarae*
 - Wagner, 1999 - Th. Wagner det.
 6. June 1952
 Ndelele (mts.), Garamba, Parc National de la, Haut-Congo,
 Democratic Republic of the Congo, Africa
 4°22'N, 29°47'E (gathering site: estimated value)

COL 2006/161 1 ♂ PT
 20. June 1952
 PFSK.5, Garamba, Parc National de la, Haut-Congo, Demo-
 cratic Republic of the Congo, Africa
 4°10'N, 29°30'E (gathering site: estimated value)

COL 2006/162 1 ♂ PT
 22. June 1952
 Utukuru (river), Garamba, Parc National de la, Haut-Congo,
 Democratic Republic of the Congo, Africa
 4°19'N, 29°52'E (gathering site: estimated value)

clasnaumanni Wagner, 2001b: 62 (*Monolepta*)

COL 2007/163 1 PT
 I.R.S.A.C.-Mus.Congo - Kivu : Terr. Masisi, Lacs - Moko-
 to, 1800 m. - B. 82 N. Leleup VI-1959 / Bior. N° 81 - Hu-
 mus - en foret / Paratype - *Monolepta* - *clasnaumanni*
 June 1959
 Lacs Mokoto (lake), Masisi, Nord-Kivu, Democratic
 Republic of the Congo, Africa
 1°16'S, 29°00'E (gathering site: estimated value)

comoeensis Wagner, 2000b: 235 (*Monolepta*)

COL 2007/164 ♂ HT (Fig. 6)
 Ivory Coast, Comoe - NP, 8,75N / 3,80W - IX.1999, C.
 Mody leg. / Holotypus / *Monolepta* - *comoeensis* - Wagner
 / AfriGa - specimen ID - 1296 - specimen data - document-
 ed - 23.III.2006
 September 1999
 Komoe, Parc National de la, Zanzan, Cote d'Ivoire, Africa
 8°45'N, 3°48'W (site information)

COL 2006/165-190 26 PT

September 1999
 Komoe, Parc National de la, Zanzan, Cote d'Ivoire, Africa
 8°45'N, 3°48'W (site information)

congoensis Wagner, 2002: 33 (*Monolepta*)

COL 2007/192 ♂ HT (Fig. 7)
 Uganda, Semliki Forest - 0°48'N, 30°8'E; 5.-12.II.97 - Th.
 Wagner leg. / C.a. S4 1 / Holotypus / *Monolepta* - *congoensis*
 - Wagner / AfriGa - specimen ID - 1267 - specimen data -
 documented - 23.III.2006
 5.-12. February 1997
 Semliki Forest, Bundibugyo, Western, Uganda, Africa
 0°48'N, 30°08'E (site information)

constantini Wagner, 2000a: 34 (*Monolepta*)

COL 2007/193 ♂ HT (Fig. 8)
 Uganda, Dtr. Mbale - Budadiri, 1240 m, 1°10'N, 34°20'E -
 Th. Wagner leg. 21.IX.1997 / Holotypus / *Monolepta* -
constantini - Wagner, 2000 - Holotypus / AfriGa - specimen
 ID - 1289 - specimen data - documented - 23.III.2006
 21. September 1997
 Budadiri, Sironko, Northern, Uganda, Africa
 1°10'N, 34°20'E (site information)

COL 2006/194 1 ♂ PT
 18. June 1952
 Iso, Garamba, Parc National de la, Haut-Congo, Democr-
 atic Republic of the Congo, Africa
 4°10'N, 29°30'E (gathering site: estimated value)

COL 2006/195 1 ♂ PT
 20. April 1952
 Embe (mts.), Garamba, Parc National de la, Haut-Congo, De-
 mocratic Republic of the Congo, Africa
 4°40'N, 29°31'E (gathering site: estimated value)

decellei Wagner, 2002: 34 (*Monolepta*)

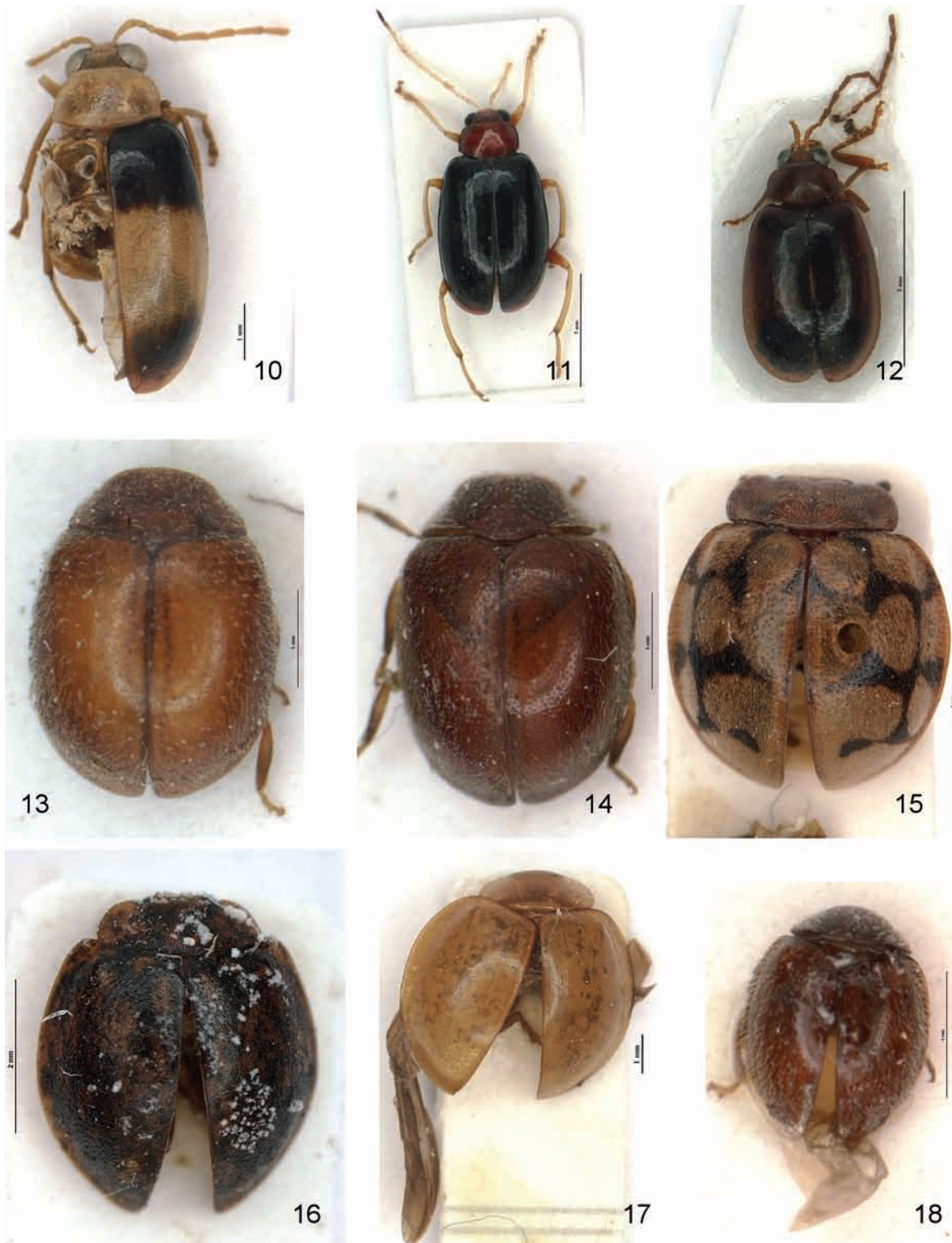
COL 2007/225 1 PT
 Coll. Mus. Tervuren - Cote d'Ivoire: Mouyassue, - 30 km,
 E.d'Aboisso - J. Decelle VI.1961 / Récolté sur - cacaoyer /
 Paratypus / *Monolepta* - *decellei* Wagner
 June 1961
 Mouyassue, Aboisso, Sud-Comoé, Cote d'Ivoire, Africa

COL 2006/226 1 PT
 20. April 1952
 Embe (mts.), Garamba, Parc National de la, Haut-Congo, De-
 mocratic Republic of the Congo, Africa
 4°40'N, 29°31'E (gathering site: estimated value)

ephippiatoides Wagner, 2001a: 206 (*Monolepta*)

COL 2007/227-229 3 PT
 SÜDAFRIKA, NE-Prov. - Tshipise, Honet Nature - Reserve
 Berg b. Camp - 22°37'S, 30°10'E, 320 m - NN, 23.-
 25.XI.1996 - leg. M. Hartmann / Paratypus / *Monolepta* -
ephippiatoides - Wagner
 23.-25. November 1996

- Tshipise, Transvaal, Northern Province, South Africa, Africa
22°37'S, 30°10'E (site information)
- gerstaeckeri** Wagner, 2001a: 200 (*Monolepta*)
COL 2007/196-197 **2 ♂ PT**
Musée du Congo - Kapiri - IX-1912 - Miss. Agric. / Paratypus / Monolepta - gerstaeckeri - Wagner
September 1912
Kapiri, Katanga, Democratic Republic of the Congo, Africa
10°18'S, 26°10'E (gathering site: estimated value)
- COL 2006/198** **1 PT**
Kundelungus, Katanga, Democratic Republic of the Congo, Africa
10°00'S, 28°00'E (gathering site: estimated value)
- hartmanni** Wagner, 2000b: 233 (*Monolepta*)
COL 2007/199 **1 PT**
Shilouvane - "C ?" habina - Zoutpansberg - H. Junod / unlesbare Etikett / Musée du Congo - Transvaal: - Zoutpansberg - Coll. Clavareau / R. Det. - L - 3678 / Paratypus / Monolepta - hartmanni Wagner / coll. - Th. Wagner
Zoutpansberg(= Soutpansberg), Transvaal, Northern Province, South Africa, Africa
22°58'S, 29°45'E (gathering site: estimated value)
- COL 2006/200** **1 ♂ PT**
19. December 1972
Macheke, Mashonaland East, Zimbabwe, Africa
18°09'S, 31°51'E (gathering site: estimated value)
- ivorensis** Wagner, 2001b: 55 (*Monolepta*)
COL 2007/201 **1 ♂ PT**
Coll. Mus. Tervuren - Cote d'Ivoire: Heremankono, - au sud de Divo - J. Decelle VIII.1961 / Paratypus / Monolepta - ivorensis - Th. Wagner
August 1961
Heremankono, Forest, Divo, Sud-Bandama, Cote d'Ivoire, Africa
5°49'S, 5°00'W (gathering site: estimated value)
- COL 2006/202-204** **3 PT**
June 1961
Mouyassue, Aboisso, Sud-Comoé, Cote d'Ivoire, Africa
- jacobyi** Freund & Wagner, 2003: 1953 (*Bonesioides*)
COL 2007/191 **♂ HT (Fig. 9)**
Uganda, District Masindi - Budongo Forest n. Sonso - 1°45'N, 31°35'E; - 19.-30.VI.95 - Th. Wagner leg. / Holotypus - Bonesioides - jacobyi / Bonesioides - jacobyi - Freund & Wagner 2000 / AfriGa - specimen ID - 1642 - specimen data - documented - 23.III.2006
19.-30. June 1995
Sonso River (Budongo Forest), Masindi, Uganda, Africa
1°45'N, 31°35'E (site information)
- kakamegaensis** Middelhauve & Wagner, 2001: 526 (*Afrocrania*)
Holotype ♂ - in: National Museums of Kenya (NMK), Nairobi
COL 2007/231 -234 **5 PT**
Kenya, Kakamega F., - 0°22'N/34°50'E, 1600m, - 7-11.II.99, Th. Wagner leg. / Paratypus - Afrocrania - kakamegaensis - Middelhauve & Wagner
7.-11. February 1999
Kakamega Forest, Western, Kenya, Africa
0°17'N, 34°53'E (exact gathering site information; imprecise data on original label!)
- laboissierei** Wagner, 2001a: 201 (*Monolepta*)
COL 2007/205-207 **3 PT**
Coll. Mus. Congo - Lulua: Kapanga - X.1933 - G.F. Overlaet / Paratypus / Monolepta - laboissierei Wagner / coll. - Th. Wagner
October 1933
Kapanga, Lulua, Kasai Occidental, Democratic Republic of the Congo, Africa
8°13'S, 22°22'E (gathering site: estimated value)
- COL 2006/208-209** **2 PT**
20. October 1951
- COL 2006/210** **1 PT**
12. April 1952
- COL 2006/211** **1 PT**
18. July 1952
Garamba, Parc National de la, Haut-Congo, Democratic Republic of the Congo, Africa
4°10'N, 29°30'E (gathering site: estimated value)
- marcoi** Freund & Wagner, 2003: 1957 (*Bonesioides*)
COL 2007/230 **1 PT**
Uganda, Semliki Forest - 0°48'N, 30°8'E; 5.-12.II.97 - Th. Wagner leg. / C.a. S7 1 / Paratypus / Bonesioides - marcoi - Freund & Wagner
5.-12. February 1997
Semliki Forest, Bundibugyo, Western, Uganda, Africa
0°48'N, 30°08'E (site information)
- mpangae** Wagner, 2000a: 38 (*Monolepta*)
COL 2007/212-213 **2 ♂ PT**
Uganda Prot. - Mpanga Forest, - Toro. 4,800 ft. - 13-23 Nov. 1911. - S. A. Neave. / 1912-193 / Paratypus / Monolepta mpangae - Wagner - Th. Wagner det. 1999
13.-23. November 1911
Mpanga Forest (forest), Central, Uganda, Africa
0°12'N, 32°18'E (gathering site: estimated value)
- naumanni** Wagner, 2005: 279 (*Monolepta*)
COL 2007/214 **♂ HT (Fig. 10)**
Uganda, District Masindi - Budongo Forest n. Sonso - 1°45'N, 31°35'E; 1.-10.VII.95 - Th. Wagner leg. / T.r.15 2 / Holotypus / Monolepta - naumanni sp. nov. - Th. Wagner / AfriGa - specimen ID - 1835 - specimen data - documented - 23.III.2006



Figs 10–18. *Monolepta naumanni* Wagner, 2005 (10) ♂ HT, *Monolepta peleae* Wagner, 2003 (11) ♂ HT, *Monolepta sonsoensis* Wagner, 2001 (12) ♂ HT, *Nephus brevipilosus* Fürsch, 1997 (13) ♂ HT, *Pseudoscymnus brunneus* Fürsch, 1997 (14) ♂ HT, *Epilachna carapacola* Fürsch, 1997 (15) ♂ HT, *Epilachna conspergata* Fürsch, 1997 (16) ♂ HT, *Harmonia gilvella* Fürsch, 2001 (17) ♂ HT, *Scotoscymnus glabripilosus* Fürsch, 1997 (18) ♂ HT: Habitus in dorsal view.

- 1.-10. July 1995
Sonso River (Budongo Forest), Masindi, Uganda, Africa
1°45'N, 31°35'E (site information)
COL 2007/244-245 **2 PT**
- 1.-10. July 1995
COL 2007/246-247 **2 PT**
- 11.-20. July 1995
Sonso River (Budongo Forest), Masindi, Uganda, Africa
1°45'N, 31°35'E (site information)
COL 2007/248 **1 PT**
- 5.-12. February 1997
Semliki Forest, Bundibugyo, Western, Uganda, Africa
0°48'N, 30°08'E (site information)
COL 2006/251 **1 PT**
- January 2003
Busumbuli River, Kakamega Forest, Western, Kenya, Africa
0°19'N, 34°52'E (exact gathering site information;
imprecise data on original label!)
COL 2006/253 **1 PT**
- October 2002
Colobus Trail, Kakamega Forest, Western, Kenya, Africa
0°21'N, 34°51'E (exact gathering site information;
imprecise data on original label!)
COL 2006/252 **1 PT**
- January 2003
Kisere Forest, Kakamega Forest, Western, Kenya, Africa
0°24'N, 34°54'E (site information)
COL 2007/249 **1 PT**
- November 2001
COL 2007/250 **1 PT**
- January 2003
Yala River, Kakamega Forest, Western, Kenya, Africa
0°12'N, 34°53'E (exact gathering site information;
imprecise data on original label!)
- peleae** Wagner, 2003: 80 (*Monolepta*)
COL 2007/215 **♂ HT (Fig. 11)**
Rwanda, Rusumo - Ibanda Makera, X.93 - Th. Wagner leg.
/ T.n.1 1 / Holotypus / *Monolepta* - *peleae* - sp. nov.
Th. Wagner / AfriGa - specimen ID - 1708 - specimen data
- documented - 23.III.2006
October 1993
Ibanda Makera, Rusumo, Kibungo, Rwanda, Africa
2°15' S, 30°50' E (gathering site: estimated value)
COL 2006/216 **1 PT**
1893
Pretoria, Transvaal, Northern Province, South Africa, Africa
25°45' S, 28°10' E (gathering site: estimated value)
COL 2006/217 **1 PT**
30. July – 2. August 2000
Peramiho, Ruvuma, Tanzania, Africa
10°39' S, 35°27' E (gathering site: estimated value)
- sonsoensis** Wagner, 2001b: 54 (*Monolepta*)
COL 2007/218 **♂ HT (Fig. 12)**
Uganda, District Masindi - Budongo Forest n. Sonso -
1°45'N, 31°35'E; 1.-10.VII.95 - Th. Wagner leg. / Holoty-
pus / *Monolepta* - *sonsoensis* Wagner / AfriGa - specimen ID
- 1276 - specimen data - documented - 23.III.2006
1.-10. July 1995
Sonso River (Budongo Forest), Masindi, Uganda, Africa
1°45'N, 31°35'E (site information)
COL 2006/219 **1 PT**
1.-10. July 1995
Sonso River (Budongo Forest), Masindi, Uganda, Africa
1°45'N, 31°35'E (site information)
- tutseki** Wagner & Scherz, 2002: 359 (*Afrocandezea*)
Holotype ♂ - in: National Museums of Kenya (NMK), Nairobi
COL 2007/235 **1 PT**
Uganda, District Masindi - Budongo Forest n. Sonso -
1°45'N, 31°35'W; - 19.-30.VI.95 - Th. Wagner leg. / Paraty-
pus / *Afrocandezea* *tutseki* - sp. nov. - Scherz & Wagner 2002
19.-30. June 1995
COL 2007/236 **1 PT**
11.-20. July 1995
COL 2007/237 **1 PT**
5.-15. January 1997
COL 2007/238-239 **2 PT**
September 1997
Sonso River (Budongo Forest), Masindi, Uganda, Africa
1°45'N, 31°35'E (exact gathering site information; error
on original label!)
COL 2007/240-243 **4 PT**
26. July – 22. August 1998
Kanyawara (Kibale National Park), Kabarole, Western,
Uganda, Africa
0°34'N, 30°20'E (gathering site: estimated value)
- upembaensis** Wagner, 2000b: 234 (*Monolepta*)
COL 2007/220 **1 PT**
Congo belge: P.N.U. - Mbuye-Bala (1750 m.) - 1-7-IV-1948
- Mis. G.F. de Witte. 1500a / Paratypus / *Monolepta* - *upem-
baensis* - Wagner / coll. - Th. Wagner
1.-7. April 1948
Mbuye-Bala (stream)(= Buye-Bala (stream)), Upemba, Parc
National de la, Katanga, Democratic Republic of the Con-
go, Africa
8°54' S, 26°59' E (gathering site: estimated value)
- ursulae** Wagner, 2003: 67 (*Monolepta*)
COL 2007/221, 257-258 **3 PT**
S.W. - AFRIKA - Okahandja I.1956. - W. Hoesch leg., ded.
- Eing.Nr.6, 1956. / Paratypus / *Monolepta* - *ursulae* -
Th. Wagner
January 1956

- Okahandja, Okahandja, Otjozondjupa, Namibia, Africa
21°59'S, 16°5'E (gathering site: estimated value)
- COL 2006/224, 265-267** 3 PT
12. January 1985
- COL 2006/268-270** 3 PT
27. March 1988
Döbra, Windhoek, Khomas, Namibia, Africa
22°20'S, 17°06'E (gathering site: estimated value)
- COL 2006/271** 1 PT
14.-22. January 1982
Kombat, Grootfontein, Otjozondjupa, Namibia, Africa
19°43'S, 17°43'E (gathering site: estimated value)
- COL 2006/272** 1 PT
20. February - 6. March 1979
Gobabeb, Swakopmund, Erongo, Namibia, Africa
23°33'S, 15°02'E (gathering site: estimated value)
- COL 2006/223, 264** 2 PT
9.-15. March 1985
Naos, Rehoboth, Hardap, Namibia, Africa
23°12'S, 16°46'E (gathering site: estimated value)
- COL 2006/261** 1 PT
15. December 1974
- COL 2006/262** 1 PT
8.-12. March 1979
- COL 2006/222, 259-260** 3 PT
8.-13. January 1982
- COL 2006/263** 1 PT
17.-20. March 1982
Okahandja, Okahandja, Otjozondjupa, Namibia, Africa
21°59'S, 16°5'E (gathering site: estimated value)
- COL 2006/273** 1 PT
18.-20. March 1991
Osona, Okahandja, Otjozondjupa, Namibia, Africa
22°04'S, 16°53'E (gathering site: estimated value)
- COL 2006/274** 1 PT
7. February 1975
- COL 2006/275-276** 2 PT
8. February 1975
- COL 2006/273** 1 PT
2. March 1975
Windhoek, Windhoek, Khomas, Namibia, Africa
22°35'S, 17°05'E (gathering site: estimated value)

COCCINELLIDAE

brevipilosus Fürsch, 1997: 18 (*Nephus*)

- COL 2006/13** ♂ HT (Fig. 13)
Rwanda, Nyakabuye - Cyamudongo X.93 - Th. Wagner leg. / C.g. 12 / Holotypus - *Nephus* ♂ - *brevipilosus* - Fürsch, 1995
October 1993
Cyamudongo, Nyakabuye, Cyangugu, Rwanda, Africa
2°33'S, 28°59'E (gathering site: estimated value)

- COL 2006/14** 1 ♂ PT
October 1993
Karengera, Cyangugu, Rwanda, Africa
2°31'S, 29°02'E (gathering site: estimated value)
- COL 2006/15-16** 2 ♀ PT
October 1993
Cyamudongo, Nyakabuye, Cyangugu, Rwanda, Africa
2°33'S, 28°59'E (gathering site: estimated value)

brunneus Fürsch, 1997: 20 (*Pseudoscymnus*)

- COL 2006/53** ♂ HT (Fig. 14)
Rwanda, Nyakabuye - Cyamudongo X.93 - Th. Wagner leg. / Cg II / Holotypus - *Pseudoscymnus* - *brunneus* ♂ - Fürsch, 1995
October 1993
Cyamudongo, Nyakabuye, Cyangugu, Rwanda, Africa
2°33'S, 28°59'E (gathering site: estimated value)
- COL 2006/54-55, 57-60** 6 ♀ PT
- COL 2006/56, 61** 2 ♂ PT
October 1993
Cyamudongo, Nyakabuye, Cyangugu, Rwanda, Africa
2°33'S, 28°59'E (gathering site: estimated value)

carapacola Fürsch, 1997: 26 (*Epilachna*)

- COL 2006/41** ♂ HT (Fig. 15)
Rwanda, 1700 m - Cyamudongo, X.93 - Th. Wagner leg. / C.g. 17 I / Holotypus - *Epilachna* ♂ - *carapacola* - Fürsch, 95
October 1993
Cyamudongo, Nyakabuye, Cyangugu, Rwanda, Africa
2°33'S, 28°59'E (gathering site: estimated value)
- COL 2006/42** 1 ♀ PT
October 1993
Cyamudongo, Nyakabuye, Cyangugu, Rwanda, Africa
2°33'S, 28°59'E (gathering site: estimated value)

conspersgata Fürsch, 1997: 24 (*Epilachna*)

- COL 2006/43** ♂ HT (Fig. 16)
Rwanda, Nyungwe - Kamiranzovu, 2000 m - Th. Wagner leg. X.93 / C.g. 2 4 / Holotypus - *Epilachna* ♂ - *conspersgata* - Fürsch, 95
October 1993
Kamiranzovu, Nyungwe Forest, Cyangugu, Rwanda, Africa
2°29'S, 29°09'E (gathering site: estimated value)
- COL 2006/44** 1 ? PT
- COL 2006/45** 1 PT
October 1993
Kamiranzovu, Nyungwe Forest, Cyangugu, Rwanda, Africa
2°29'S, 29°09'E (gathering site: estimated value)
- COL 2006/46** 1 ♀ PT
October 1993
Karengera, Cyangugu, Rwanda, Africa
2°31'S, 29°02'E (gathering site: estimated value)

fissilobis Fürsch, 2001b: 103-104 (*Pharoscygnus*)

Holotype ♂ - in: National Museums of Kenya (NMK), Nairobi

COL 2006/107-115 **9 PT**

Kenya, Nairobi, Langata, - 1°20'S/36°46'E, 1650 m, 12.-14.I.1999, - Th. Wagner leg. / T.s.4 4 / Paratypus - *Pharoscygnus* - *fissilobis* - Fürsch, 1999
12.-14. January 1999
Langata (Nairobi), Nairobi, Kenya, Africa
1°20'S, 36°46'E (site information)

gilvella Fürsch, 2001b: 98-99 (*Harmonia*)

COL 2006/1185 ♂ HT (Fig. 17)

Uganda, Semliki Forest - 0°48' N, 30°8' E; 5.-12.II.97 - Th. Wagner leg. / C.a. S3 7 / Holotypus - *Micraspis* ♂ - *gilvella* - Fürsch, 1999
5.-12. February 1997
Semliki Forest, Bundibugyo, Western, Uganda, Africa
0°48' N, 30°08' E (site information)

COL 2006/6-8, 1186-1190 8 PT

5.-12. February 1997
Semliki Forest, Bundibugyo, Western, Uganda, Africa
0°48' N, 30°08' E (site information)

glabripilosus Fürsch, 1997: 22 (*Scotoscygnus*)

COL 2006/62 ♂ HT (Fig. 18)

Rwanda, 1700 m - Karengera, X.93 - Th. Wagner leg. / C.g.1 14 / Holotypus - *Scotoscygnus* - *glabripilosus* ♂ - Fürsch, 1995
October 1993
Karengera, Cyangugu, Rwanda, Africa
2°31'S, 29°02'E (gathering site: estimated value)

COL 2006/63-64, 70, 73, 75-80 10 PT

October 1993
Cyamudongo, Nyakabuye, Cyangugu, Rwanda, Africa
2°33'S, 28°59'E (gathering site: estimated value)

COL 2006/65, 67-69, 81 5 PT

October 1993
Karengera, Cyangugu, Rwanda, Africa
2°31'S, 29°02'E (gathering site: estimated value)

COL 2006/66, 72, 74 3 PT

October 1993
Kamiranzovu, Nyungwe Forest, Cyangugu, Rwanda, Africa
2°29'S, 29°09'E (gathering site: estimated value)

COL 2006/71 1 PT

October 1993
Ibanda Makera, Rusumo, Kibungo, Rwanda, Africa
2°15'S, 30°50'E (gathering site: estimated value)

gracilis Fürsch, 1997: 20 (*Ortalia*)

COL 2006/5 ♂ HT (Fig. 19)

Rwanda, Rusumo - Ibanda Makera, X.93 - Th. Wagner leg. / Holotypus - *Ortalia* - *gracilis* ♂ - Fürsch, 95 / *Ortalia* *basinigra* Ma. - det. H. Fürsch 03
October 1993

Ibanda Makera, Rusumo, Kibungo, Rwanda, Africa

2°15'S, 30°50'E (gathering site: estimated value)

goellnerae Fürsch, 2001b: 100 (*Platynaspis*)

COL 2007/58-59 2 ♀ PT

Uganda, Semliki Forest - 0°48' N, 30°8' E; 5.-12.II.97 - Th. Wagner leg. / Paratype - *Platynaspis* - *goellnerae* ♀ - Fürsch, 1999
5.-12. February 1997
Semliki Forest, Bundibugyo, Western, Uganda, Africa
0°48' N, 30°08' E (site information)

kenyensis Fürsch, 2001b: 101-102 (*Boschalis*)

Holotype ♂ - in: National Museums of Kenya (NMK), Nairobi

COL 2006/116 1 PT

Mt. Kenya, NP-HQ, - 2550 m, 0°10.5'S/37°8.8'E; - II.99 Th. Wagner leg. / P.I.17 2 / Paratypus - *Boschalis* *kenyensis* - Fürsch, 99
February 1999
Mount Kenya (mts.), Central, Kenya, Africa
0°10'S, 37°11'E (exact gathering site information; imprecise data on original label!)

COL 2006/117 1 PT

January 1999
Gatamayu, Kikuyu, Central, Kenya, Africa
0°58'S, 36°42'E (site information)

COL 2006/118 1 PT

18. February 1999
SE-Aberdare, Central, Kenya, Africa
0°23'S, 36°46'E (site information)

magnifica Fürsch, 2006: 114-115 (*Cheilomenes*)

COL 2007/56 ♂ HT (Fig. 20)

Kenya, Busumbuli, 1600 m - Kakamega Forest - 0,27°N / 34,88°E - W. Freund leg. X.01 / T.n.138 1 - IX.-X.2001 / Holotypus - *Cheilomenes* - *magnifica* ♂ - Fürsch, 2005
October 2001
Busumbuli River, Kakamega Forest, Western, Kenya, Africa
0°19'N, 34°52'E (exact gathering site information; imprecise data on original label!)

COL 2007/57 1 ♀ PT

January 2003
Kisere Forest, Kakamega Forest, Western, Kenya, Africa
0°24'N, 34°54'E (site information)

maximus Fürsch, 1997: 22-24 (*Scotoscygnus*)

COL 2006/87 ♂ HT (Fig. 21)

Rwanda, Nyakabuye - Cyamudongo X.93 - Th. Wagner leg. / Cg 9 / Holotypus ♂ - *Scotoscygnus* - *maximus* - Fürsch, 95
October 1993
Cyamudongo, Nyakabuye, Cyangugu, Rwanda, Africa
2°33'S, 28°59'E (gathering site: estimated value)

COL 2006/88, 90-106 18 PT

October 1993
Cyamudongo, Nyakabuye, Cyangugu, Rwanda, Africa
2°33'S, 28°59'E (gathering site: estimated value)



Figs 19–27. *Ortalia gracilis* Fürsch, 1997 (19) ♂ HT, *Cheilomenes magnifica* Fürsch, 2006 (20) ♂ HT, *Scotoscymnus maximus* Fürsch, 1997 (21) ♂ HT, *Ortalia minima* Fürsch, 2001 (22) ♂ HT, *Nephus rugulipennis* Fürsch, 1997 (23) ♂ HT, *Scymnus rwan-densis* Fürsch, 1997 (24) ♂ HT, *Telsimia striata* Fürsch, 1997 (25) ♂ HT, *Epilachna struwei* Fürsch, 2001 (26) ♂ HT, *Boschalis wagneri* Fürsch, 1997 (27) ♂ HT: Habitus in dorsal view.

- COL 2006/89** **1 PT**
October 1993
Karengera, Cyangugu, Rwanda, Africa
2°31'S, 29°02'E (gathering site: estimated value)
- minima** Fürsch, 2001b: 99 (*Ortalia*)
COL 2006/4 **♂ HT (Fig. 22)**
Uganda, District Masindi - Budongo Forest n. Sonso -
1°45'N, 31°35'E; 15.-25.I.97 - Th. Wagner leg. / C.a.35 1
/ Holotypus - *Ortalia* ♂ - *minima* - Fürsch, 1999
15.-25. January 1997
Sonso River (Budongo Forest), Masindi, Uganda, Africa
1°45'N, 31°35'E (site information)
- montivagans** Fürsch, 2001a: 91-92 (*Nephus*)
Holotype ♂ - in: National Museums of Kenya (NMK), Nairobi
COL 2006/9,11 **2 PT**
Mt. Kenya, NP-HQ, - 2550 m, 0°10.5'S, 37°8.8'E; - II.99 Th.
Wagner leg. / Av 16 2 / Paratypus - *Nephus* - *montivagans* -
Fürsch, 1999
February 1999
Mount Kenya (mts.), Central, Kenya, Africa
0°10'S, 37°11'E (exact gathering site information;
imprecise data on original label!)
- COL 2006/10** **1 PT**
18. February 1999
SE-Aberdare, Central, Kenya, Africa
0°23'S, 36°46'E (site information)
- rubida** Fürsch, 2001b: 104 (*Epilachna*)
Holotype ♂ - in: National Museums of Kenya (NMK), Nairobi
COL 2006/31-40 **10 PT**
Mt. Kenya, Chogoria Rte., - 0°09'S/37°26'E, 2800 m, -
25.II.1999, Th. Wagner leg. / Paratype - *Epilachna* - *rubida*
- Fürsch, 2000
25. February 1999
Chogoria Rte., Mount Kenya (mts.), Eastern, Kenya,
Africa
0°09'S, 37°26'E (site information)
- rubridorsis** Fürsch, 2001a: 92-93 (*Nephus*)
Holotype ♂ - in: National Museums of Kenya (NMK), Nairobi
COL 2006/17 **1 ♀ PT**
Kenya Kikuyu, Gatamayu - 2330 m 0°58'S/36°42'E, - 2.99
leg. Th. Wagner / Paratypus - *Nephus* (*Sidis*) - *rubridorsis* ♀
- Fürsch 2000
February 1999
Gatamayu, Kikuyu, Central, Kenya, Africa
0°58'S, 36°42'E (site information)
- rugulipennis** Fürsch, 1997: 18 (*Nephus*)
COL 2006/12 **♂ HT (Fig. 23)**
Rwanda, Rusumo - Ibanda Makera, X.93 - Th. Wagner leg.
/ Holotypus - *Nephus* ♂ - *rugulipennis* - Fürsch, 1995
October 1993
- Ibanda Makera, Rusumo, Kibungo, Rwanda, Africa
2°15'S, 30°50'E (gathering site: estimated value)
- rwandensis** Fürsch, 1997: 16 (*Scymnus*)
COL 2006/47 **♂ HT (Fig. 24)**
Rwanda, Rusumo - Ibanda Makera, X.93 - Th. Wagner leg.
/ T.n.5 3 / Holotypus - *Scymnus* (*Pullus*) - *rwandensis* ♂ -
Fürsch, 1995
October 1993
Ibanda Makera, Rusumo, Kibungo, Rwanda, Africa
2°15'S, 30°50'E (gathering site: estimated value)
- COL 2006/48 - 52** **5 PT**
October 1993
Ibanda Makera, Rusumo, Kibungo, Rwanda, Africa
2°15'S, 30°50'E (gathering site: estimated value)
- striata** Fürsch, 1997: 20-22 (*Telsimia*)
COL 2006/131 **♂ HT (Fig. 25)**
Rwanda, 1700 m - Cyamudongo, X.93 - Th. Wagner leg. /
C.g.4 2 / Holotypus - *Telsimia* - *striata* ♂ - Fürsch, 1995
October 1993
Cyamudongo, Nyakabuye, Cyangugu, Rwanda, Africa
2°33'S, 28°59'E (gathering site: estimated value)
- COL 2006/132** **1 ♀ PT**
COL 2006/133-134 **2 PT**
October 1993
Cyamudongo, Nyakabuye, Cyangugu, Rwanda, Africa
2°33'S, 28°59'E (gathering site: estimated value)
- struwei** Fürsch, 2001b: 105-106 (*Epilachna*)
COL 2006/125 **♂ HT (Fig. 26)**
Rwanda, Mont - Bisoke, X.92 / Holotypus - *Epilachna* -
struwei ♂ - Fürsch, 1999
October 1992
Volcano Visoke (Bisoko), Volcano National Park,
Ruhengeri, Rwanda, Africa
1°28'S, 29°29'E (gathering site: estimated value)
- COL 2006/126-130** **5 PT**
October 1992
Volcano Visoke (Bisoko), Volcano National Park,
Ruhengeri, Rwanda, Africa
1°28'S, 29°29'E (gathering site: estimated value)
- vulpecula** Fürsch, 2001a: 93 (*Nephus*)
Holotype ♂ - in: National Museums of Kenya (NMK), Nairobi
COL 2006/18, 29 **2 PT**
Kenya, Kikuyu, Gatamayu, - 2330 m 0°58'S/36°42'E - II.99
Th. Wagner leg. / P.I.4 2 / Paratypus - *Nephus* - *vulpecula* -
Fürsch, 1999
February 1999
Gatamayu, Kikuyu, Central, Kenya, Africa
0°58'S, 36°42'E (site information)
- COL 2006/19-28, 30** **11 PT**
18. February 1999
SE-Aberdare, Central, Kenya, Africa
0°23'S, 36°46'E (site information)

wagneri Fürsch, 1995: 30 (*Boschalis*)

- COL 2006/119** ♂ HT (Fig. 27)
Rwanda, Nyakabuye - Cyamudongo X.93 - Th. Wagner leg.
/ C.g.9 3 / Holotype - *Boschalis* - *wagneri* ♂ - Fürsch, 1995
October 1993
Cyamudongo, Nyakabuye, Cyangugu, Rwanda, Africa
2°33' S, 28°59' E (gathering site: estimated value)
- COL 2006/120-124** 5 PT
October 1993
Cyamudongo, Nyakabuye, Cyangugu, Rwanda, Africa
2°33' S, 28°59' E (gathering site: estimated value)

wagneri Fürsch, 2001b: 103 (*Scotoscymnus*)

Holotype ♂ - in: National Museums of Kenya (NMK), Nairobi, 3 paratypes dto.

- COL 2006/82-86** 5 PT
Kenya, SE-Aberdare, - 0°23'S/36°46'E, 2750 m, - 18.II.99
Th. Wagner leg. / P.I. 263 / Paratypus - *Scotoscymnus* -
wagneri - Fürsch, 1999
18. February 1999
SE-Aberdare, Central, Kenya, Africa
0°23' S, 36°46' E (site information)

wagneri Fürsch, 2006a: 116; 2006b: 266 (*Stethorus*)

Holotype ♂ - in: National Museums of Kenya (NMK), Nairobi, 32 paratypes dto.

- COL 2007/60-65** 6 PT
Kenya, Kakamega F., - 0°22'N/34°50'E, 1600 m, - 7-11.II.99,
Th. Wagner leg. / Paratypus - *Stethorus* - *wagneri* - Fürsch,
2005
7.-11. February 1999
Kakamega Forest, Western, Kenya, Africa
0°17' N, 34°53' E (exact gathering site information;
imprecise data on original label!)
- COL 2007/66** 1 PT
October 2002
Busumbuli River, Kakamega Forest, Western, Kenya, Africa
0°19' N, 34°52' E (exact gathering site information;
imprecise data on original label!)
- COL 2007/67-68** 2 PT
October 2001
- COL 2007/69-74** 6 PT
January 2002
- COL 2007/75** 1 PT
October 2002
- COL 2007/76-78** 3 PT
January 2003
Colobus Trail, Kakamega Forest, Western, Kenya, Africa
0°21' N, 34°51' E (exact gathering site information;
imprecise data on original label!)
- COL 2007/79** 1 PT
January 2002
- COL 2007/80-81** 2 PT
January 2003
Isiukhu River, Kakamega Forest, Western, Kenya, Africa

0°20' N, 34°53' E (exact gathering site information;
imprecise data on original label!)

- COL 2007/82-84** 3 PT
January 2002
- COL 2007/85-86** 2 PT
October 2002
- COL 2007/87-88** 2 PT
January 2003
Kisere Forest, Kakamega Forest, Western, Kenya, Africa
0°24' N, 34°54' E (site information)
- COL 2007/89-94** 6 PT
January 2002
- COL 2007/95-97** 3 PT
January 2003
Yala River, Kakamega Forest, Western, Kenya, Africa
0°12' N, 34°53' E (exact gathering site information;
imprecise data on original label!)

DERMESTIDAE

rusumoensis Háva & Herrmann, 2002: 254 (*Orphinus*)

- COL 2007/254** ♂ HT (Fig. 28)
Rwanda, Rusumo - Ibanda Makera, X.93 - Th. Wagner leg.
/ Holotypus - *Orphinus* (*Orphinus*) - *rusumoensis* n. sp. ♂ -
det. J. Háva & A. Herrmann 2002
October 1993
Ibanda Makera, Rusumo, Kibungo, Rwanda, Africa
2°15' S, 30°50' E (gathering site: estimated value)

wagneri Háva & Herrmann, 2002: 253 (*Orphinus*)

- COL 2007/255** ♂ HT (Fig. 29)
Rwanda, Rusumo - Ibanda Makera, X.93 - Th. Wagner leg.
/ Holotypus - *Orphinus* (*Orphinus*) - *wagneri* n. sp. ♂ - det.
J. Háva & A. Herrmann 2002
October 1993
Ibanda Makera, Rusumo, Kibungo, Rwanda, Africa
2°15' S, 30°50' E (gathering site: estimated value)

HYDROPHILIDAE

magnus Hebauer, 2002b: 6 (*Allocotocerus*)

- COL 2006/135-136** 2 PT
Kenya, Kakamega F., - 0°22'N/34°50'E, 1600 m, - 7-11.II.99,
Th. Wagner leg. / Paratypus - *Allocotocerus* - *magnus*
sp. n. - des. F. Hebauer
7.-11. February 1999
Kakamega Forest, Western, Kenya, Africa
0°17' N, 34°53' E (exact gathering site information;
imprecise data on original label!)
- COL 2006/137-138** 2 PT
05.-15. Jan. 1997
Sonso River (Budongo Forest), Masindi, Uganda, Africa
1°45' N, 31°35' E (site information)

melinus Hebauer, 2001: 384 (*Enochrus*)

COL 2006/141 **1 PT**

Uganda District Masindi - Budongo Forest n. Sonso - 1°45'N, 31°35'W 19.-30.VI.95 - Th. Wagner leg. / Paratypus / *Enochrus* (Meth.) - *melinus* sp. n. - det. F. HEBAUER 19.-30. June 1995
Sonso River (Budongo Forest), Masindi, Uganda, Africa 1°45'N, 31°35'E (exact gathering site information; error on original label!)

perssoni Hebauer, 2002a: 267 (*Enochrus*)

COL 2006/140 **1 PT**

Kenya, SE-Aberdare, - 0°23'N/36°46'E, 2750 m, - 16.-21.II.1999 Th. Wagner leg. / Paratypus / *Enochrus* (Meth.) - *perssoni* sp. n. - det. F. HEBAUER 16.-21. February 1999
SE-Aberdare, Central, Kenya, Africa 0°23'N, 36°46'E (site information)

wagneri Hebauer, 2002b: 14 (*Helochares*)

COL 2006/139 **1 PT**

Kenya, Kakamega F. - 0°22'N/34°50'E, 1600 m, - 7-11.II.99, Th. Wagner leg. / Paratypus - *Helochares* - *wagneri* sp. n. - det. F. Hebauer 7.-11. February 1999
Kakamega Forest, Western, Kenya, Africa 0°17'N, 34°53'E (exact gathering site information; imprecise data on original label!)

LAEMOPHLOEIDAE

wagneri Karner, 1997: 95-98 (*Notolaemus*)

COL 2006/142 **♂ HT (Fig. 30)**

Rwanda, Rusumo - Ibanda Makera, X.93 - Th. Wagner leg. / T.n. 5 / Holotypus - *Notolaemus* - *wagneri* - n.sp. ♂ - M. Karner 1996
October 1993
Ibanda Makera, Rusumo, Kibungu, Rwanda, Africa 2°15'S, 30°50'E (gathering site: estimated value)

COL 2006/143 **1 ♂ PT**

COL 2006/144-148 **5 ♀ PT**

October 1993
Ibanda Makera, Rusumo, Kibungu, Rwanda, Africa 2°15'S, 30°50'E (gathering site: estimated value)

MELYRIDAE

adrastus Evers, 1998: 63-64 (*Sphinginopalpus*)

COL 2006/164 **♂ HT (Fig. 31)**

Rwanda, Rusumo - Ibanda Makera, X.93 - Th. Wagner leg. / T.n.8 / Von *Teclea nobilis* gefoggt / Holotypus ♂ / *Sphinginopalpus* - *adrastus* Evers - A. Evers det. 1997
October 1993
Ibanda Makera, Rusumo, Kibungu, Rwanda, Africa 2°15'S, 30°50'E (gathering site: estimated value)

carapae Evers, 1998: 60-62 (*Attalus*)

COL 2006/149,151,153 **3 ♀ PT**

Rwanda, Nyungwe - Kamiranzovu, 2000 m - Th. Wagner leg. X.93 / C.g.2 / Von *Carapa grandiflora* gefoggt / Paratypus ♀ / *Attalus* - *carapae* Evers - A. Evers det. 1997
October 1993
Kamiranzovu, Nyungwe Forest, Cyangugu, Rwanda, Africa 2°29'S, 29°09'E (gathering site: estimated value)

COL 2006/150 **1 ♀ PT**

October 1993
Cyamudongo, Nyakabuye, Cyangugu, Rwanda, Africa 2°33'S, 28°59'E (gathering site: estimated value)

COL 2006/152 **1 ♂ PT**

October 1993
Karengera, Cyangugu, Rwanda, Africa 2°31'S, 29°02'E (gathering site: estimated value)

karengerae Evers, 1998: 62 (*Attalus*)

COL 2006/154 **1 ♀ AT**

Rwanda, 1700 m - Karengera, X.93 - Th. Wagner leg. / C.g.1 / Von *Carapa grandiflora* gefoggt / Allotypus ♀ / *Attalus* - *karengerae* Evers - A. Evers det. 1997
October 1993
Karengera, Cyangugu, Rwanda, Africa 2°31'S, 29°02'E (gathering site: estimated value)

lateridentatus Evers, 1998: 64 (*Colotes*)

COL 2006/165 **♂ HT (Fig. 32)**

Rwanda, Rusumo - Ibanda Makera, X.93 - Th. Wagner leg. / T.n.6 / Von *Teclea nobilis* gefoggt / Holotypus ♂ / ♂ / *Colotes lateridentatus* Evers - A. Evers det. 1997
October 1993
Ibanda Makera, Rusumo, Kibungu, Rwanda, Africa 2°15'S, 30°50'E (gathering site: estimated value)

COL 2006/166-170 **5 ♀ PT**

October 1993
Ibanda Makera, Rusumo, Cyangugu, Rwanda, Africa 2°15'S, 30°50'E (gathering site: estimated value)

stilifer Evers, 1998: 60 (*Afrocarphurus*)

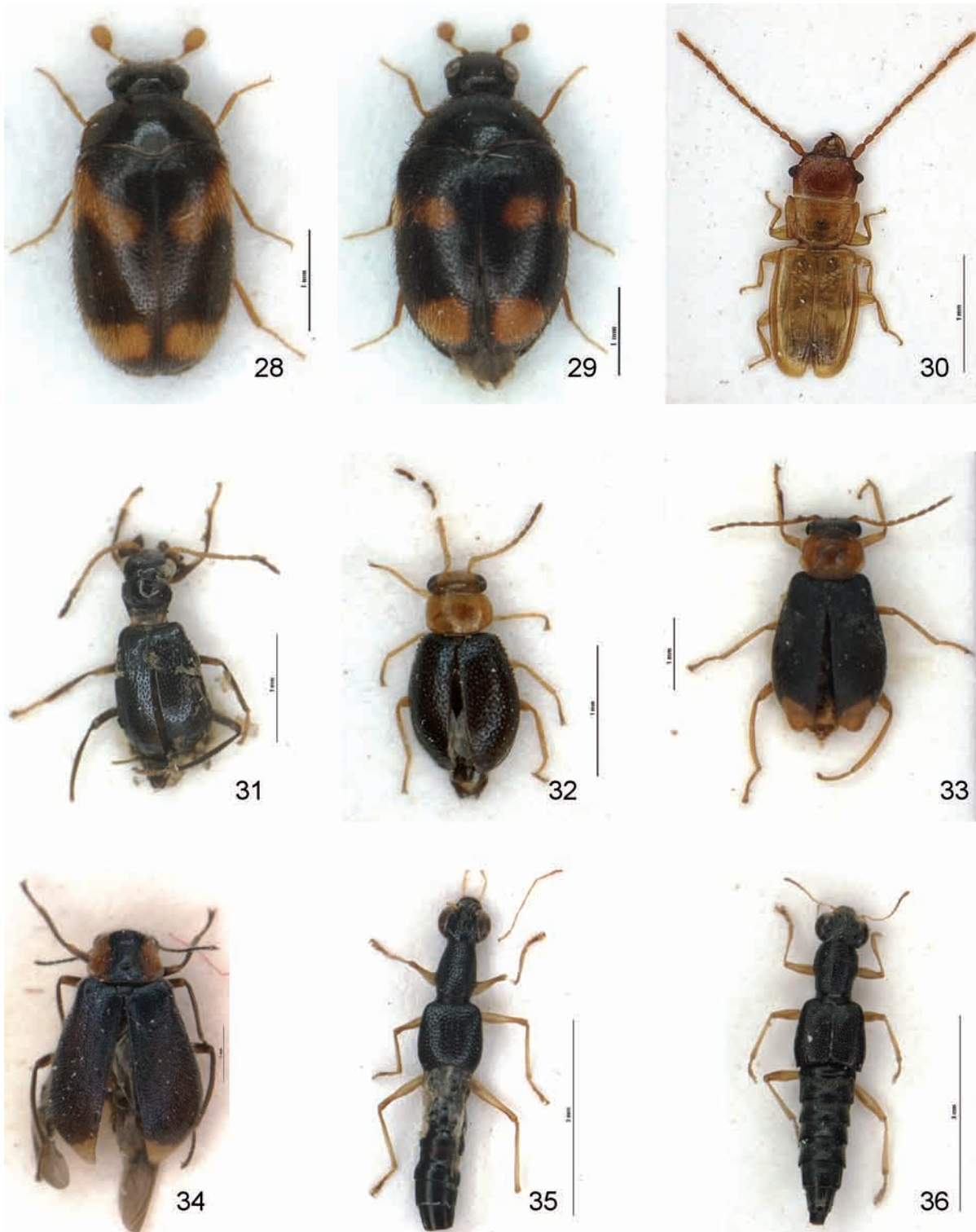
COL 2006/163 **1 ♀ PT**

Rwanda, Karengera - Cyamudongo X.93 - Th. Wagner leg. / C.g.3 / Von *Carapa grandiflora* gefoggt / Paratypus ♀ / *Afrocarphurus* - *stilifer* Evers - A. Evers det. 1997 / 1 Paratypus - ♀ behalten
October 1993
Cyamudongo, Nyakabuye, Cyangugu, Rwanda, Africa 2°33'S, 28°59'E (gathering site: estimated value)

tecleae Evers, 1998: 64-65 (*Morphotroglops*)

COL 2006/162 **1 ♀ AT**

Rwanda, Rusumo - Ibanda Makera, X.93 - Th. Wagner leg. / T.n.8 / Von *Teclea nobilis* gefoggt / Allotypus ♀ / *Morphotroglops* - *tecleae* Evers - A. Evers det. 1997



Figs 28–36. *Orphinus rusumoensis* Háva & Herrmann, 2002 (28) ♂ HT, *Orphinus wagneri* Háva & Herrmann, 2002 (29) ♂ HT, *Notolaemus wagneri* Karner, 1997 (30) ♂ HT, *Sphinginopalpus adrastus* Evers, 1998 (31) ♂ HT, *Colotes lateridentatus* Evers, 1998 (32) ♂ HT, *Afroebaeus wagneri* Evers, 1998 (33) ♂ HT, *Attalus wagneri* Evers, 1998 (34) ♂ HT, *Stenus arborarius* Puthz, 1999 (35) ♂ HT, *Stenus wagnerianus* Puthz, 1999 (36) ♂ HT: Habitus in dorsal view.

October 1993
Ibanda Makera, Rusumo, Kibungo, Rwanda, Africa
2°15' S, 30°50' E (gathering site: estimated value)

wagneri Evers, 1998: 65 (*Afrobaeus*)

COL 2006/155 ♂ HT (Fig. 33)
Rwanda, Karengera - Cyamudongo X.93 - Th. Wagner leg.
/ C.g.4 / Von Carapa grandiflora gefoggt / Holotypus ♂ /
Afrobaeus - wagneri Evers - A. Evers det. 1997
October 1993
Karengera, Cyangugu, Rwanda, Africa
2°31' S, 29°02' E (gathering site: estimated value)

COL 2006/158,160 2 ♀ PT

COL 2006/159 1 ♂ PT

October 1993
Karengera, Cyangugu, Rwanda, Africa
2°31' S, 29°02' E (gathering site: estimated value)

COL 2006/161 1 ♀ PT

October 1993
Cyamudongo, Nyakabuye, Cyangugu, Rwanda, Africa
2°33' S, 28°59' E (gathering site: estimated value)

wagneri Evers, 1998: 62-63 (*Attalus*)

COL 2006/156 ♀ HT (Fig. 34)
Rwanda, Karengera - Cyamudongo X.93 - Th. Wagner leg.
/ C.g.1 / Von Carapa grandiflora gefoggt / Holotypus ♀ /
Attalus - wagneri Evers - A. Evers det. 1997
October 1993
Karengera, Cyangugu, Rwanda, Africa
2°31' S, 29°02' E (gathering site: estimated value)

COL 2006/157 1 ♀ PT

October 1993
Kamiranzovu, Nyungwe Forest, Cyangugu, Rwanda,
Africa
2°29' S, 29°09' E (gathering site: estimated value)

STAPHYLINIDAE

arborarius Puthz, 1999a: 15-17 (*Stenus*)

COL 2006/171 ♂ HT (Fig. 35)
Uganda, District Masindi - Budongo Forest n. Sonso -
1°45' N, 31°35' W 11.-20.VII.95 - Th. Wagner leg. / T.n.17
4 / Puthz, 1998 / *Stenus* - arborarius - spec. nov. - det. V.
Puthz 1998 / 1 pt behalten
11.-20. July 1995
Sonso River (Budongo Forest), Masindi, Uganda, Africa
1°45' N, 31°35' E (exact gathering site information; error
on original label!)

COL 2006/172 1 ♂ PT

15.-25. January 1997
Sonso River (Budongo Forest), Masindi, Uganda, Africa
1°45' N, 31°35' E (gathering site)

wagneri Puthz, 1999b: 21 (*Megalopinus*)

COL 2007/279 ♀ HT (Fig. 36)

Uganda District Masindi - Budongo Forest n. Sonso -
1°45' N, 31°35' W 19.-30.VI.95 - Th. Wagner leg. / T.r.3 1 /
Holotypus / *Megalopinus* - wagneri - spec. nov. - det. V.
Puthz 1998
19.-30. June 1995
Sonso River (Budongo Forest), Masindi, Uganda, Africa
1°45' N, 31°35' E (exact gathering site information; error
on original label!)

wagnerianus Puthz, 1999a: 18-19 (*Stenus*)

COL 2006/173 ♂ HT (Fig. 37)

Rwanda, Nyungwe - Kamiranzovu, 2000 m - Th. Wagner
leg. X.93 / ♂ - Holotypus / *Stenus* - wagnerianus - spec.
nov. - det. V. Puthz 1998 / 1 pt behalten
October 1993
Kamiranzovu, Nyungwe Forest, Cyangugu, Rwanda,
Africa
2°29' S, 29°09' E (gathering site: estimated value)

COL 2006/174 1 ♂ PT

October 1993
Kamiranzovu, Nyungwe Forest, Cyangugu, Rwanda,
Africa
2°29' S, 29°09' E (gathering site: estimated value)

Acknowledgements. We thank Dr. Bradley J. Sinclair (ZFMK, Bonn) for checking the English text and Dr. Thomas Wagner (University Koblenz) for valuable information.

REFERENCES

- ADLBAUER, K. 2006. Weitere neue Bockkäfer aus der Äthiopischen Region (Coleoptera, Disteniidae und Cerambycidae). *Les Cahiers Magellanes* **55**: 1-21.
- EVERS, M. J. A. 1998. Die kronenbewohnenden Malachiidae (Coleoptera) dreier Baumarten in Rwanda und Kivu. *Bonner Zoologische Beiträge* **48** (1): 59-66.
- FREUND, W. & WAGNER, TH. 2003. Revision of *Bonesioides* Laboissière, 1925 (Coleoptera; Chrysomelidae; Galerucinae) from continental Africa. *Journal of Natural History* **37**: 1915-1976.
- FRIESER, R. 1997. Teilergebnisse der von Thomas Wagner in Zentralafrika im Rahmen der Baumkronenbenebelung erbeuteten Anthribiden (Coleoptera: Anthribidae). *Acta Coleopterologica* **XIII** (1): 11-20.
- FÜRSCH, H. 1995. Revision der Gattung *Boschalis* Weise, 1897, mit Beschreibung neuer Arten. (Coleoptera, Coccinellidae). *Mitteilungen der Münchner Entomologischen Gesellschaft* **85**: 21-31.
- FÜRSCH, H. 1997. Coccinellidae (Coleoptera) aus Rwanda. *Bonner Zoologische Beiträge* **47** (1/2): 13-39.
- FÜRSCH, H. 2001a. Zur Coccinelliden-Fauna der Wälder in Zentral- und Ostafrika, mit Beschreibungen neuer Arten (Coleoptera, Coccinellidae). *Entomologische Zeitschrift* **111** (3): 90-94.

- FÜRSCH, H. 2001b. Zur Coccinelliden-Fauna der Wälder in Zentral- und Ostafrika, mit Beschreibungen neuer Arten (Coleoptera, Coccinellidae). *Entomologische Zeitschrift* **111** (4): 98–107.
- FÜRSCH, H. 2006a. Zur Marienkäferfauna des Kakamega Forest in Kenya mit biogeographischen Anmerkungen (Coleoptera, Coccinellidae). *Entomologische Zeitschrift* **116** (3): 113–117.
- FÜRSCH, H. 2006b. Die afrotropischen Arten von *Stethorus* Weise, 1885 (Coleoptera: Coccinellidae, Scymninae). *Entomologische Zeitschrift* **116** (6): 261–268.
- HÁVA, J. & HERRMANN, A. 2003. *Orphinus wagneri* sp. n. and *Orphinus rusomoensis* sp. nov. (Coleoptera: Dermestidae) from Rwanda. *Entomologische Zeitschrift* **113** (8): 253–254.
- HEBAUER, F. 2001. Taxonomische Studien zur Hydrophiliden-Gattung *Enochrus* Thomson, 1859. 2. Teil: Die afrikanischen Arten der Untergattung *Methydrus* Rey, 1885. A: Die *Enochrus meracus*-Gruppe (Coleoptera, Hydrophilidae). *Beiträge zur Entomologie* **51** (2): 375–391.
- HEBAUER, F. 2002a. Taxonomische Studien zur Hydrophiliden-Gattung *Enochrus* Thomson, 1859. – 3. Teil: Die afrikanischen Arten der Untergattung *Methydrus* Rey, 1885. B.: Die *Enochrus natalensis*-Gruppe. *Beiträge zur Entomologie* **52** (1): 255–269.
- HEBAUER, F. 2002b. New Hydrophilidae of the Old World (Coleoptera, Hydrophilidae). *Acta Coleopterologica* **XVIII** (3): 3–24.
- KARNER, M. 1997. A new species of *Notolaemus* Lefkovitch from Rwanda (Coleoptera: Laemophloeidae). *Bonner Zoologische Beiträge* **47** (1–2): 95–98.
- MIDDELHAUVE, J. & WAGNER, TH. 2001. Revision of *Afrocrania* (Coleoptera: Chrysomelidae, Galerucinae). Part I: Species in which the males have head cavities or extended elytral extrusions. *European Journal of Entomology* **98**: 511–532.
- PUTHZ, V. 1999a. Zwei neue afrikanische Arten der Gattung *Stenus* Latreille, 1796 und eine taxonomische Bemerkung (Col., Staphylinidae). *Zeitschrift der Arbeitsgemeinschaft Österreichischer Entomologen* **51** (1): 15–20.
- PUTHZ, V. 1999b. *Megalopinus wagneri* sp.n. aus Uganda (Coleoptera, Staphylinidae). *Zeitschrift der Arbeitsgemeinschaft Österreichischer Entomologen* **51** (1): 21–24.
- WAGNER, TH. 2000a. New *Monolepta* species (Coleoptera: Chrysomelidae, Galerucinae) from Eastern Africa. *Entomologische Zeitschrift* **110** (2): 34–40.
- WAGNER, TH. 2000b. Revision of Afrotropical *Monolepta* Chevrolat, 1837 (Coleoptera, Chrysomelidae, Galerucinae). Part I: Species with red and black coloured elytra, pronotum and head, with description of new species. *Entomologische Zeitschrift* **110** (8): 226–237.
- WAGNER, TH. 2001a. New *Monolepta* species (Coleoptera, Chrysomelidae, Galerucinae) from Central and Southern Africa. *Entomologische Blätter* **96**: 199–209.
- WAGNER, TH. 2001b. Revision of Afrotropical *Monolepta* Chevrolat, 1837 (Coleoptera: Chrysomelidae, Galerucinae). Part II: Species with red elytra, pronotum and head, with descriptions of new species. *Bonner Zoologische Beiträge* **50** (1/2): 49–65.
- WAGNER, TH. 2002. Revision of Afrotropical *Monolepta* species (Coleoptera, Chrysomelidae, Galerucinae). Part III: Species with red elytra and yellow prothorax, including descriptions of new species. *Deutsche Entomologische Zeitschrift* **49** (1): 27–45.
- WAGNER, TH. & SCHERZ, X. 2002. *Afrocandezea* gen. nov. from tropical Africa (Coleoptera: Chrysomelidae, Galerucinae). *Entomologische Zeitschrift* **112** (12): 357–362.
- WAGNER, TH. 2003. Revision of afrotropical *Monolepta* Chevrolat, 1837 (Coleoptera, Chrysomelidae, Galerucinae). – Part IV: Species with red head and thorax and black elytra or black elytra with red apex, with description of new species. *Annales Sciences Zoologiques, Miscellanea* **49**: 37–89.
- WAGNER, TH. 2005. Revision of the vincta Species-group of *Monolepta* Chevrolat, 1837 from Africa, Arabia and the Near East (Coleoptera: Chrysomelidae, Galerucinae). *Bonner Zoologische Beiträge* **53** (1/2): 255–282.

Authors' addresses: Karl-Heinz LAMPE (corresponding author), Dirk ROHWEDDER & Carola SCHMIDT, Zoologisches Forschungsmuseum Alexander Koenig (ZFMK), Adenauerallee 160, 53113 Bonn, Germany. E-Mail: k.lampe.zfmk@uni-bonn.de

Received: 22.12.2006

Accepted: 08.01.2007

Corresponding editor: M. Schmitt